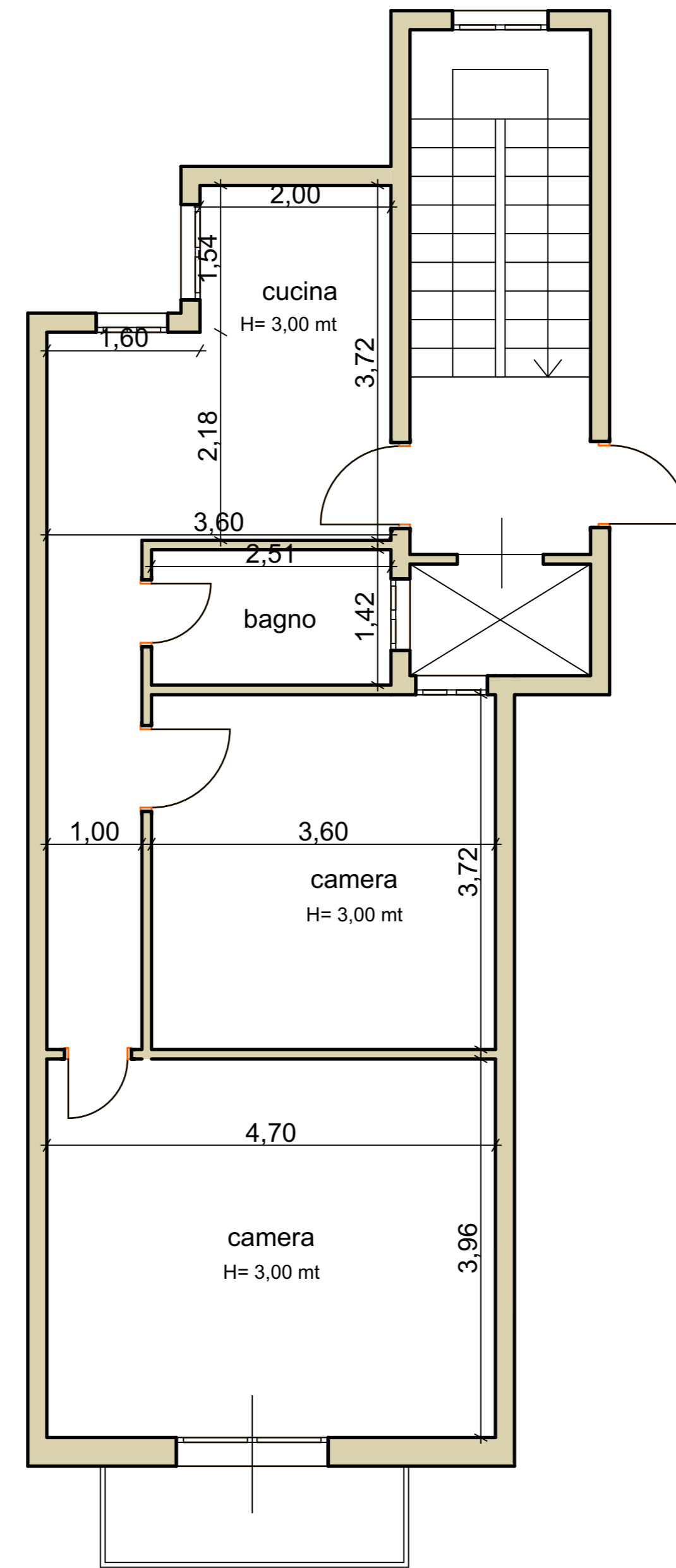




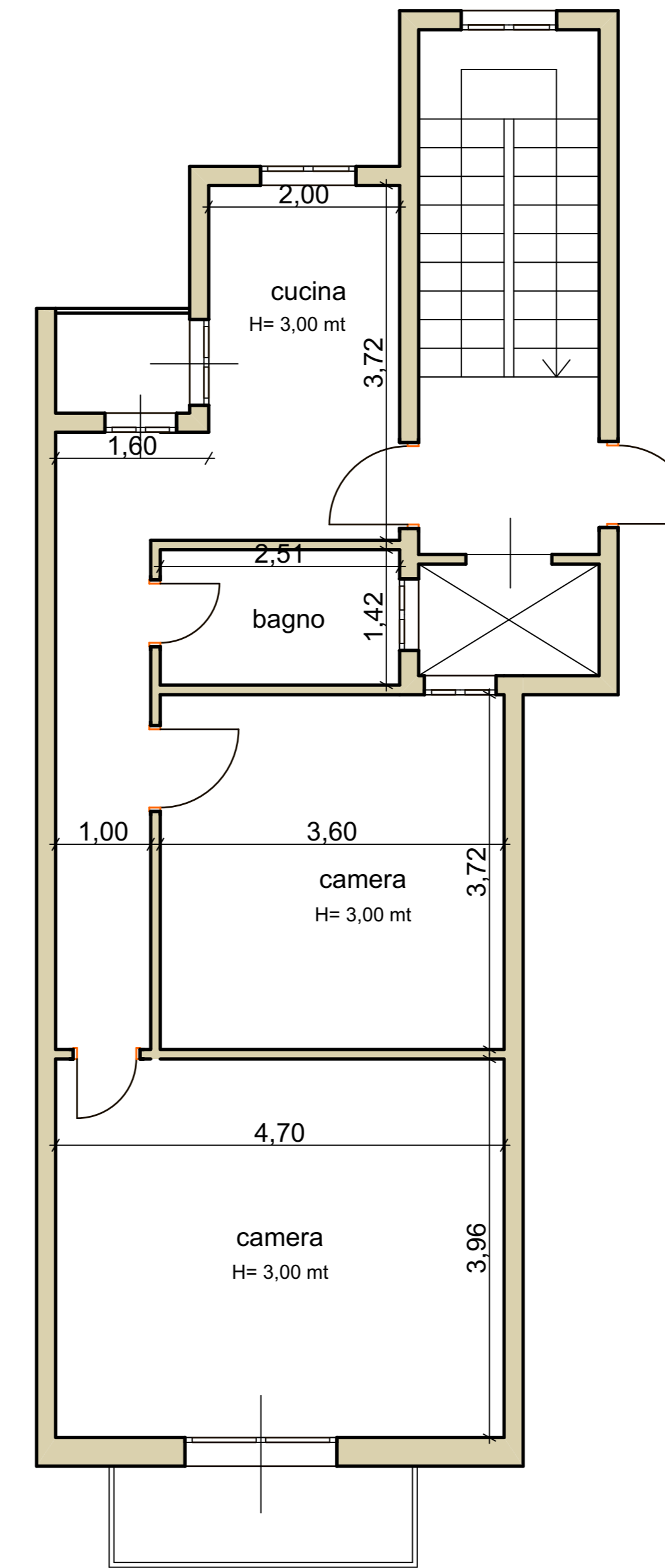
CORTILE INTERNO



VIA FRANCESCO CRISPI

STATO DEI LUOGHI AL MOMENTO  
DEL SOPRALLUOGO

CORTILE INTERNO



VIA FRANCESCO CRISPI

PLANIMETRIA LEGITTIMA

SUPERFICIE COMMERCIALE

Appartamento: 57,00 mq  
Balconi: 4,60 mq