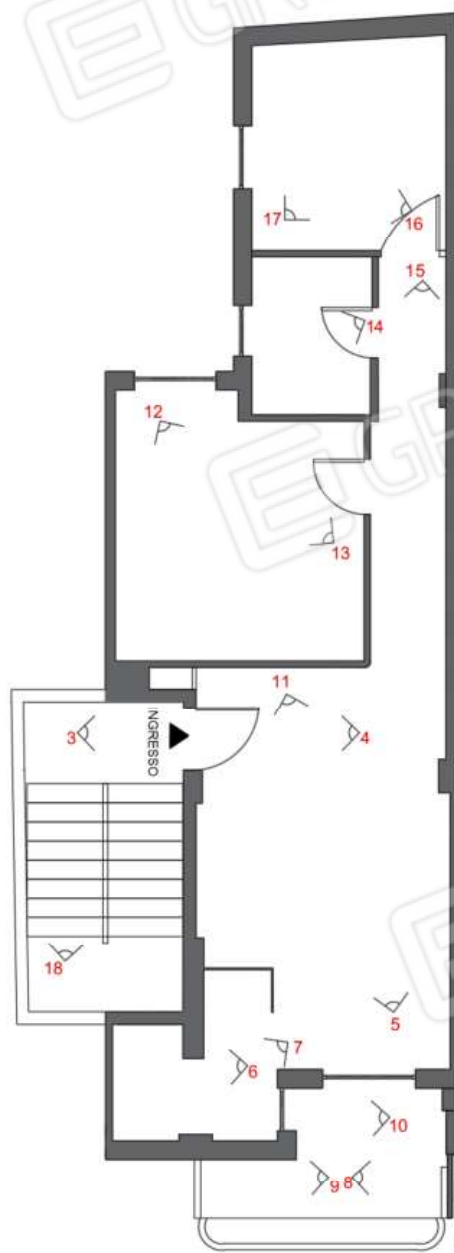




**ING. MIRIAM GRASSI**

**LOTTO UNICO**

- Foglio 31 part. 9460 sub 18  
**APPARTAMENTO 2° PIANO**



Via Calle del Porto, Torre B – 71043 Manfredonia(FG)

p.iva: 03960270712 - cell:3386804930 - mail: miriamgrassi@live.it - pec: miriam.grassi@ingpec.eu

**Ing. Miriam Grassi**



ING. MIRIAM GRASSI



1.



2.



3.



4.

Via Calle del Porto, Torre B – 71043 Manfredonia(FG)

p.iva: 03960270712 - cell:3386804930 - mail: miriamgrassi@live.it - pec: miriam.grassi@ingpec.eu

Ing. Miriam Grassi



**ING. MIRIAM GRASSI**



5.



6.



7.



Via Calle del Porto, Torre B – 71043 Manfredonia (FG)

p.iva: 03960270712 - cell:3386804930 - mail: miriamgrassi@live.it - pec: miriam.grassi@ingpec.eu

**Ing. Miriam Grassi**





ING. MIRIAM GRASSI



8.



9.



10.



11.

Via Calle del Porto, Torre B – 71043 Manfredonia(FG)

p.iva: 03960270712 - cell:3386804930 - mail: miriamgrassi@live.it - pec: miriam.grassi@ingpec.eu

Ing. Miriam Grassi



**ING. MIRIAM GRASSI**



18.



19.



20.



21.

Via Calle del Porto, Torre B – 71043 Manfredonia(FG)

p.iva: 03960270712 - cell:3386804930 - mail: miriamgrassi@live.it - pec: miriam.grassi@ingpec.eu

**Ing. Miriam Grassi**