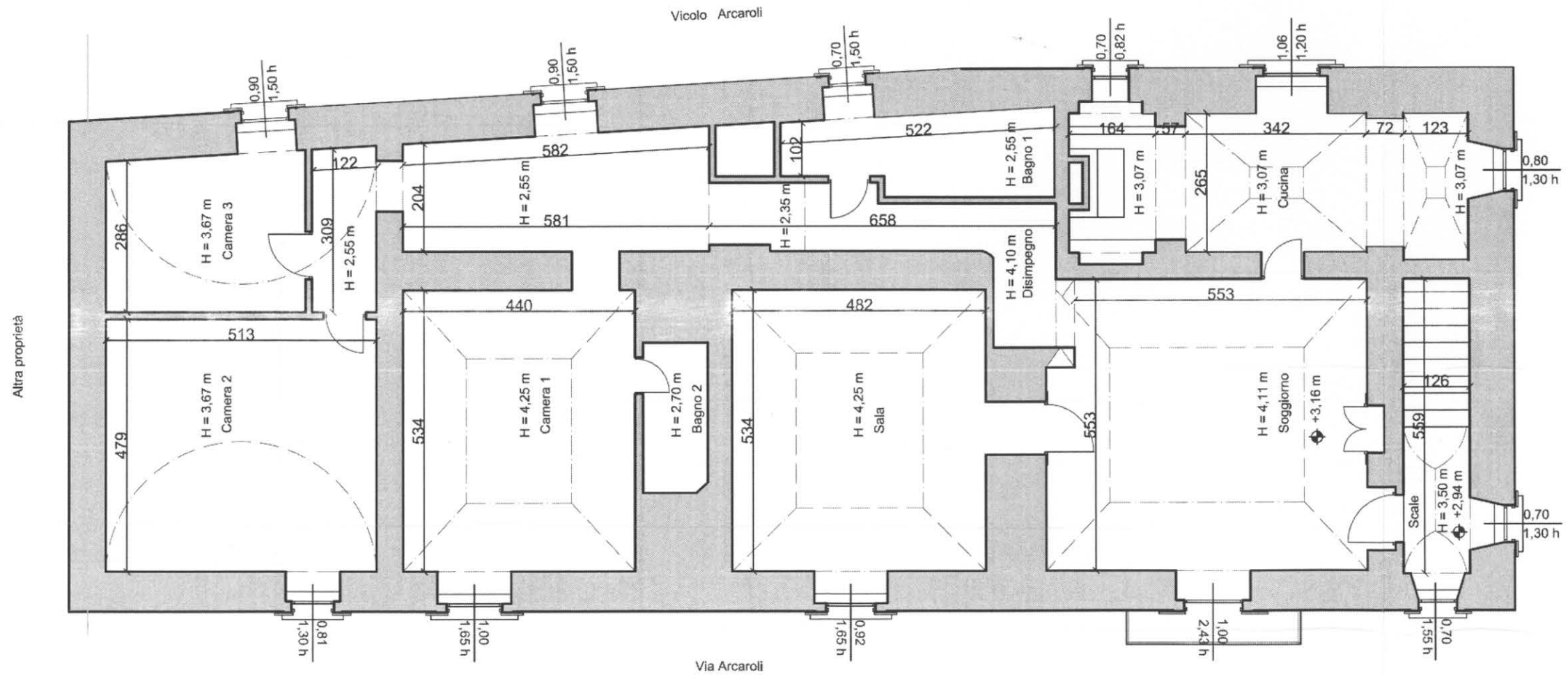
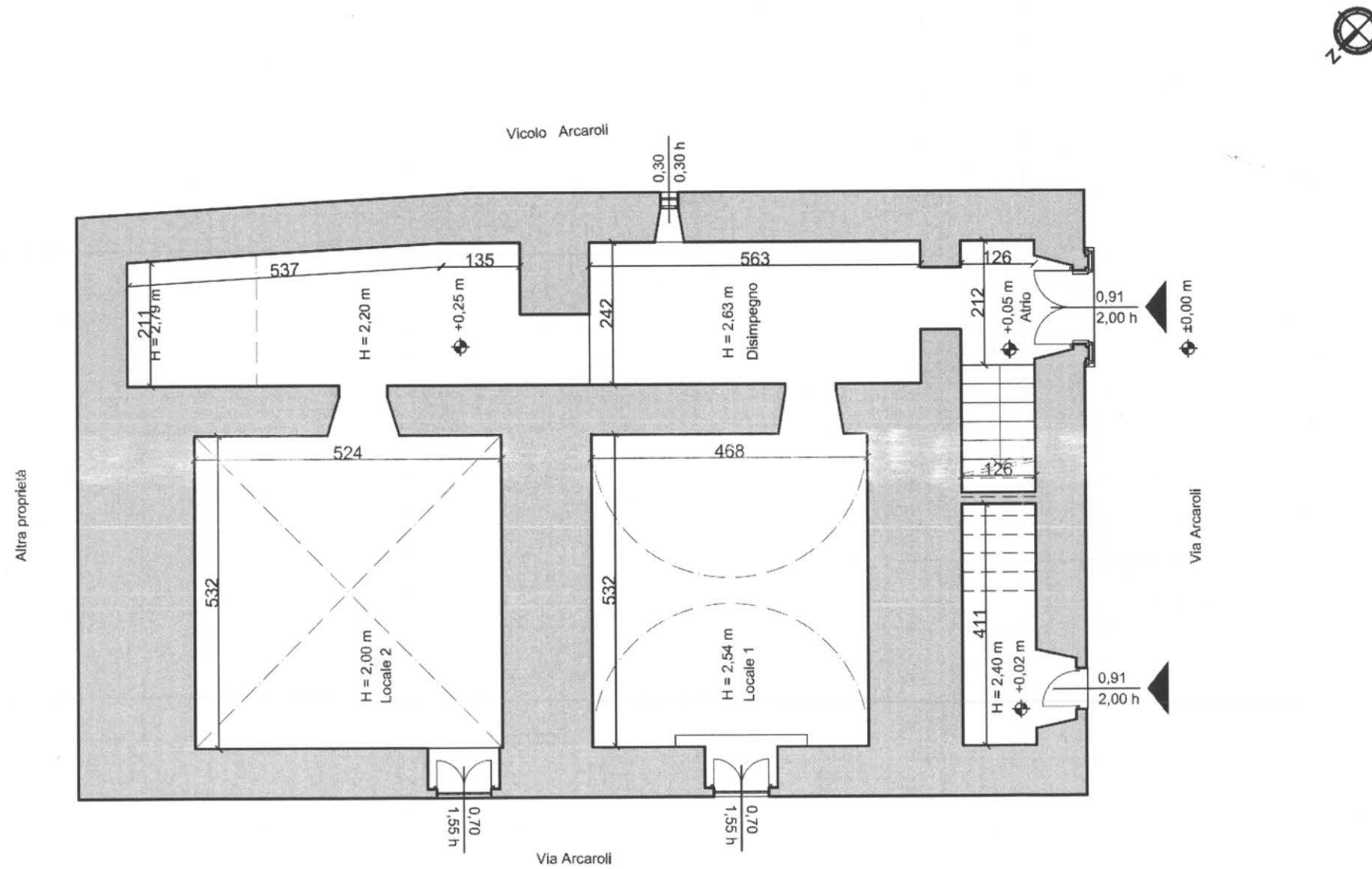


LOTTO n.°2, Immobile A - pianta piano primo



LOTTO n.°2, Immobile A - pianta piano terra



superficie principale (mq.)	sup. netta (mq.)	sup. lorda (mq.)
Soggiorno	34,30	
Cucina	21,75	
Disimpegno P.1.	27,31	
Bagno 1	7,80	
Bagno 2	3,56	
Camera 1	24,75	
Camera 2	25,00	
Camera 3	12,00	
Scale	8,60	
atrio	3,80	
sup. totale (mq.)	Spn = 168,87	Spl = 270,32

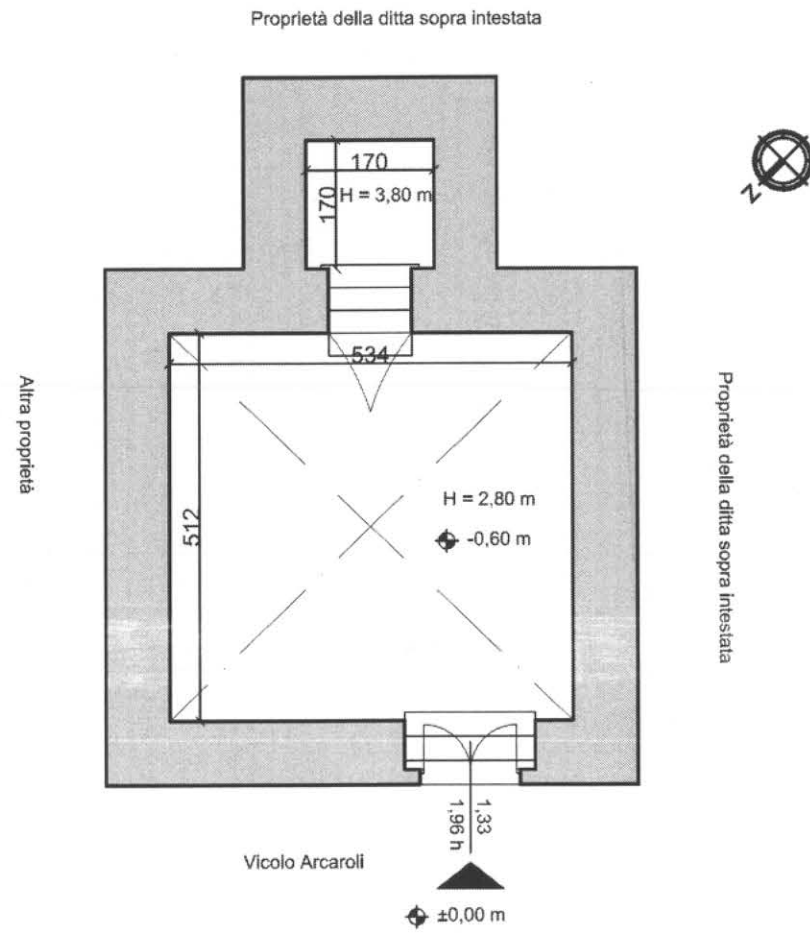
sup. secondaria (mq.)	sup. netta (mq.)	sup. lorda (mq.)
Locale 1	Ss1a = 25,71	
Locale 2	Ss1b = 28,71	
Disimpegno P.T.	Ss1c = 30,82	SsT = 146,43
balconi	Ss2 = 2,15	



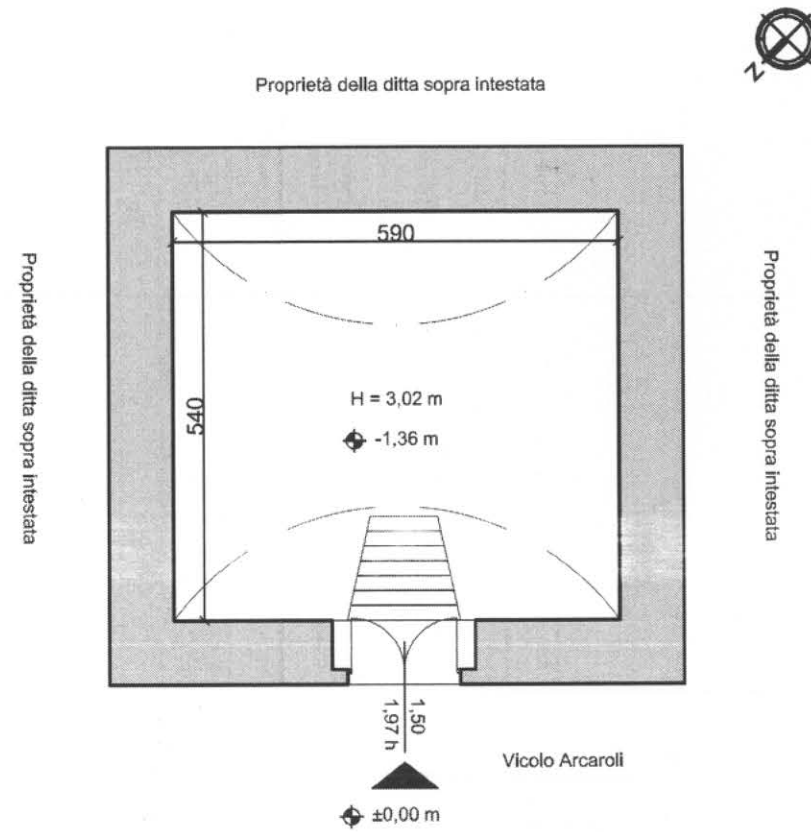
LOTTO n.°2, Immobile D - pianta piano terra

LOTTO n.°2, Immobile C - pianta piano semi-interrato

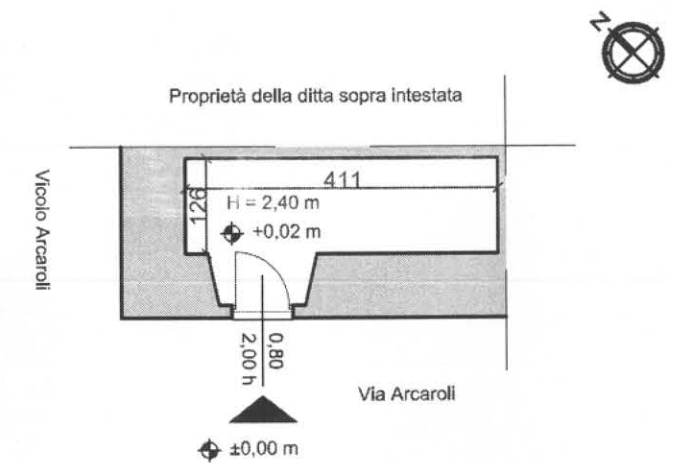
LOTTO n.°2, Immobile B - pianta piano terra



superficie	sup. netta (mq.)	sup. lorda (mq.)
Locale	32,30	
sup. totale (mq.)	32,30	52,50



superficie	sup. netta (mq.)	sup. lorda (mq.)
Locale	33,10	
sup. totale (mq.)	33,10	52,96



superficie	sup. netta (mq.)	sup. lorda (mq.)
Locale	6,05	
sup. totale (mq.)	6,05	11,43

