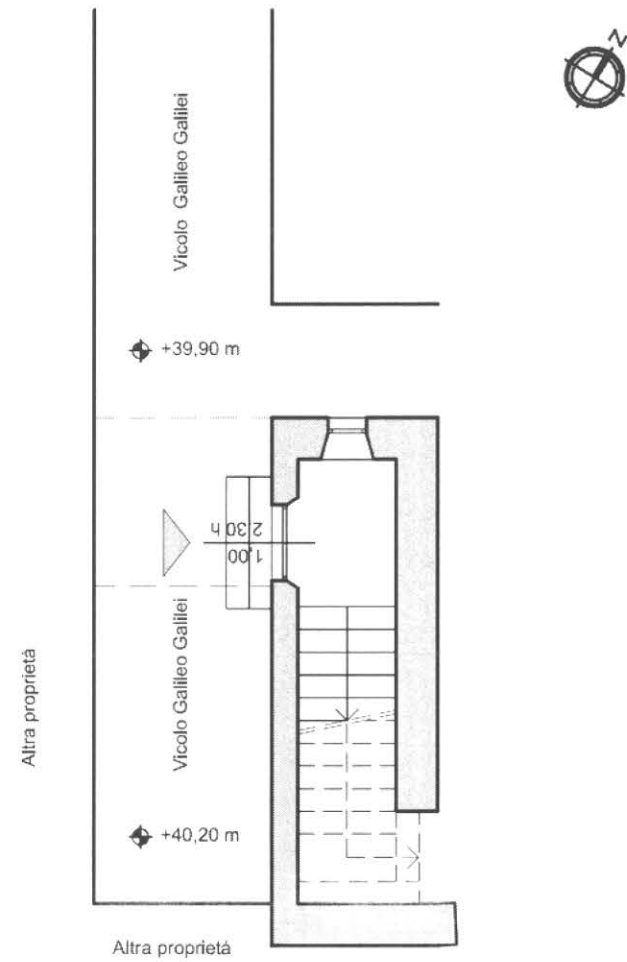
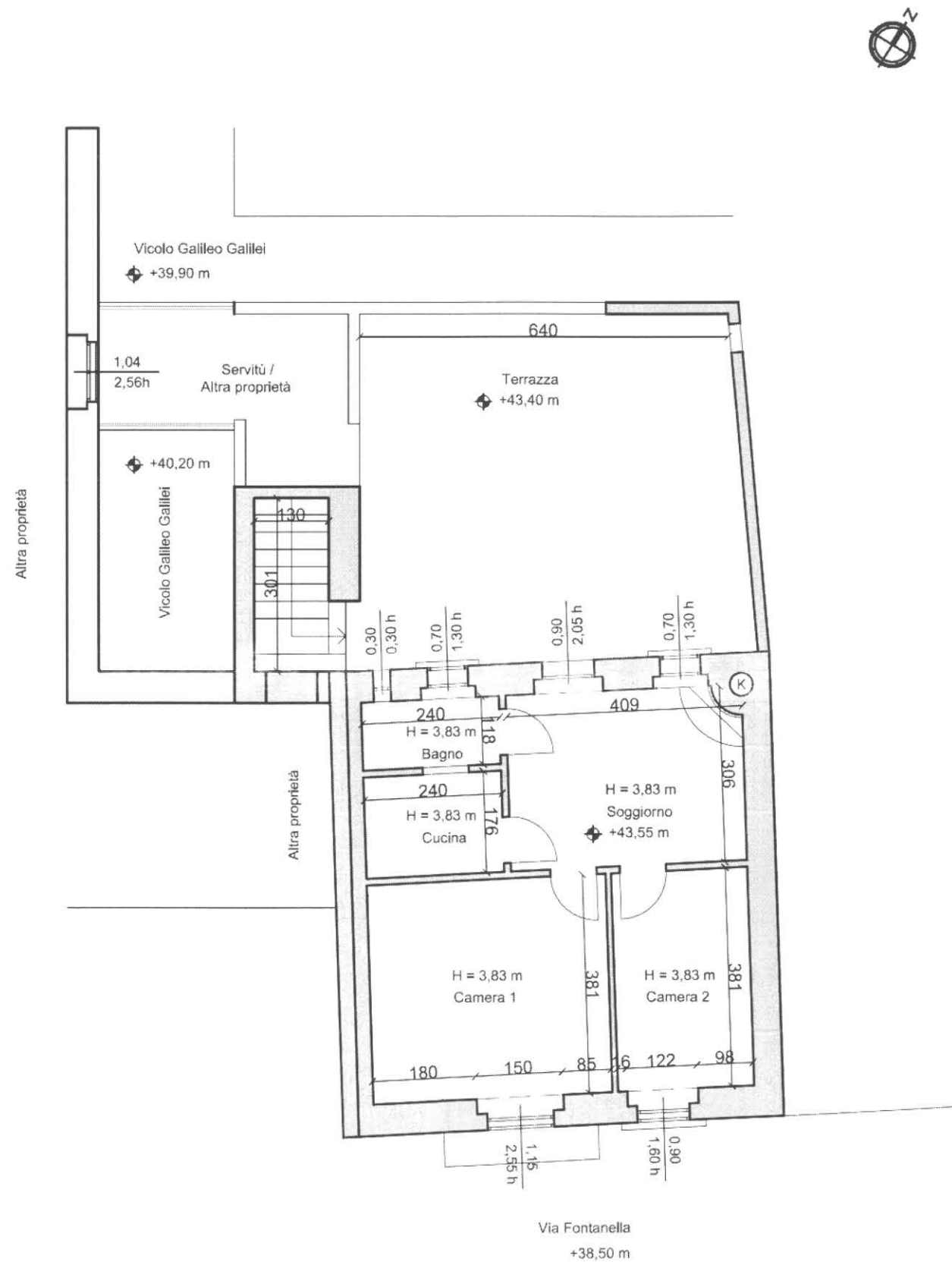


LOTTO n.°12, Immobile A - pianta piano terra



LOTTO n.°12, Immobile A - pianta piano primo



superficie principale (mq.)	sup. netta (mq.)	sup. lorda (mq.)
Soggiorno	12,40	
Bagno	2,83	
Cucina	4,22	
Camera 1	16,30	
Camera 2	13,27	
<b>sup. totale (mq.)</b>	<b>49,02</b>	<b>59,50</b>

sup. secondaria (mq.)	sup. netta (mq.)	sup. lorda (mq.)
Terrazzo/balcone	Ss = 41,90	Ss = 41,90
Scale	Ss = 8,51	Ss = 15,30

