

## TRIBUNALE DI AGRIGENTO

Sezione Esecuzioni Immobiliari



Procedura Esecutiva N.R.G.E. 32/2018

Giudice delle Esecuzione  
Dott.ssa Beatrice Ragusa

Creditore procedente

[REDACTED]

Contro

[REDACTED]

**LOTTO 3**

**FOTO**

Immobile residenziale sito in Porto Empedocle via Antonino Cassarà n° snc  
censito al Catasto Fabbricati al  
foglio 21 mappale 674 sub 66 piano secondo, appartamento  
foglio 21 mappale 674 sub 36 piano terra, box-auto

L'esperto

Arch. Nicolò Salvatore Scopelliti



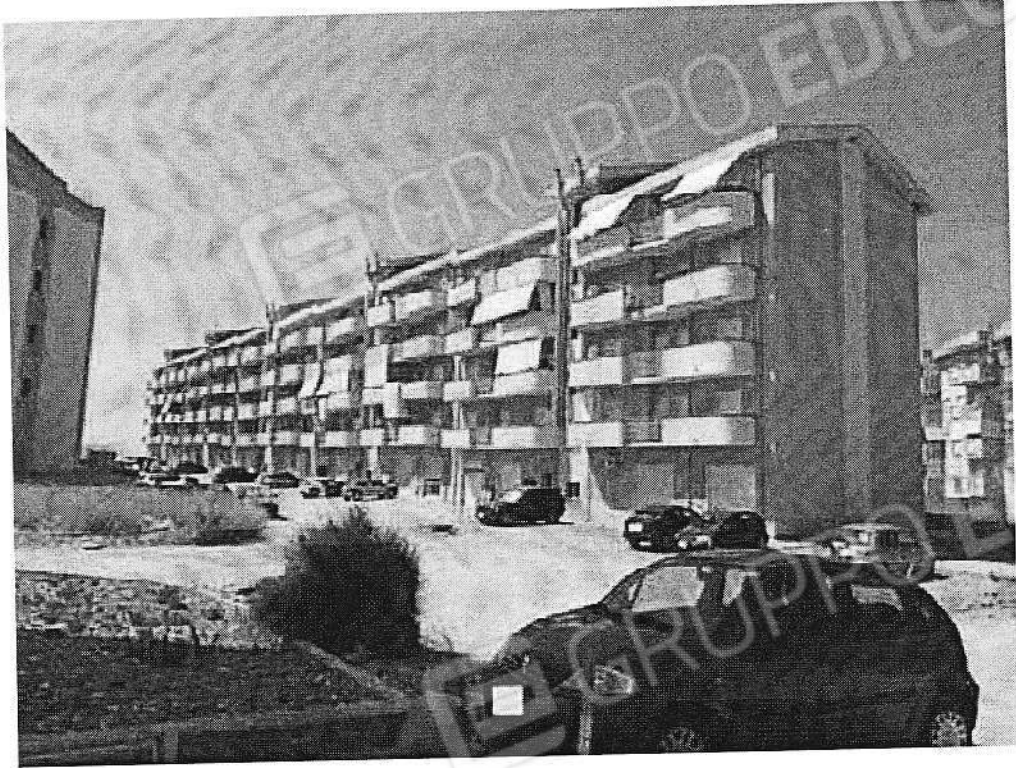


Foto 1



Foto 2



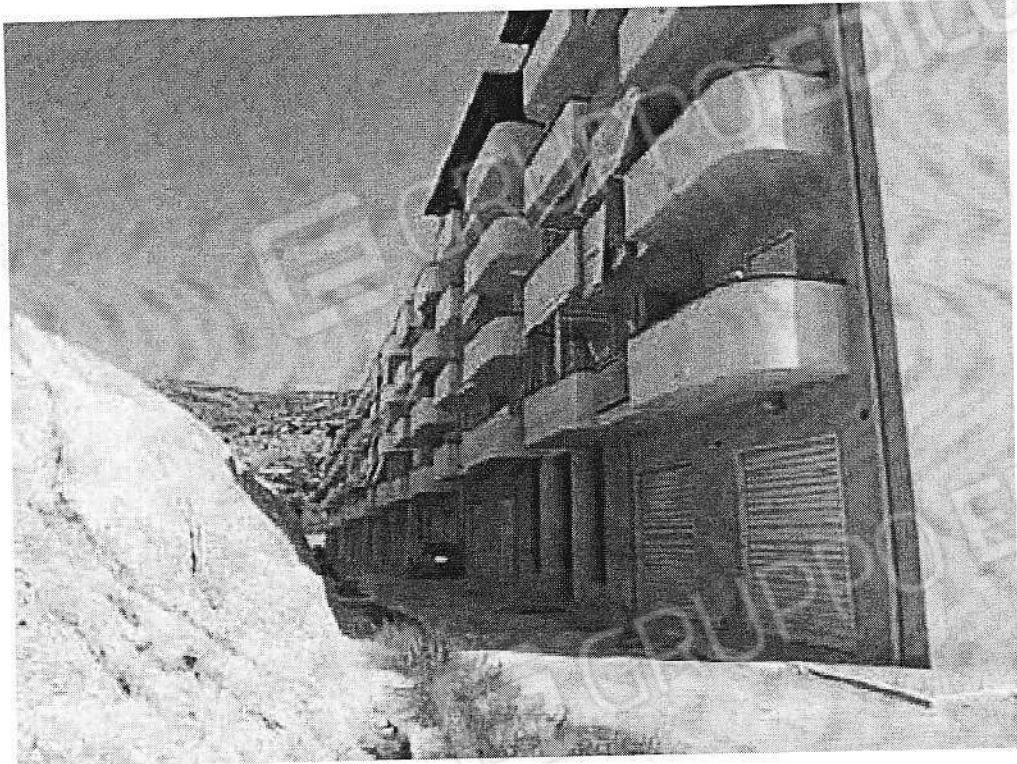


Foto 3



Foto 4





Foto 5



Foto 6





Foto 7

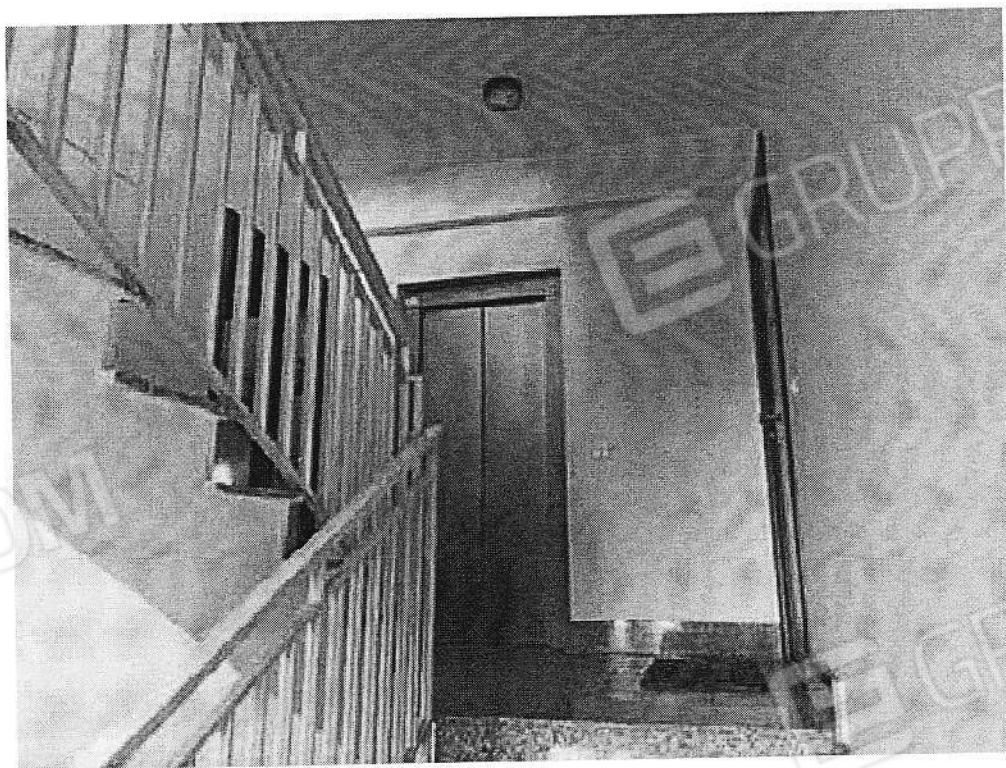


Foto 8



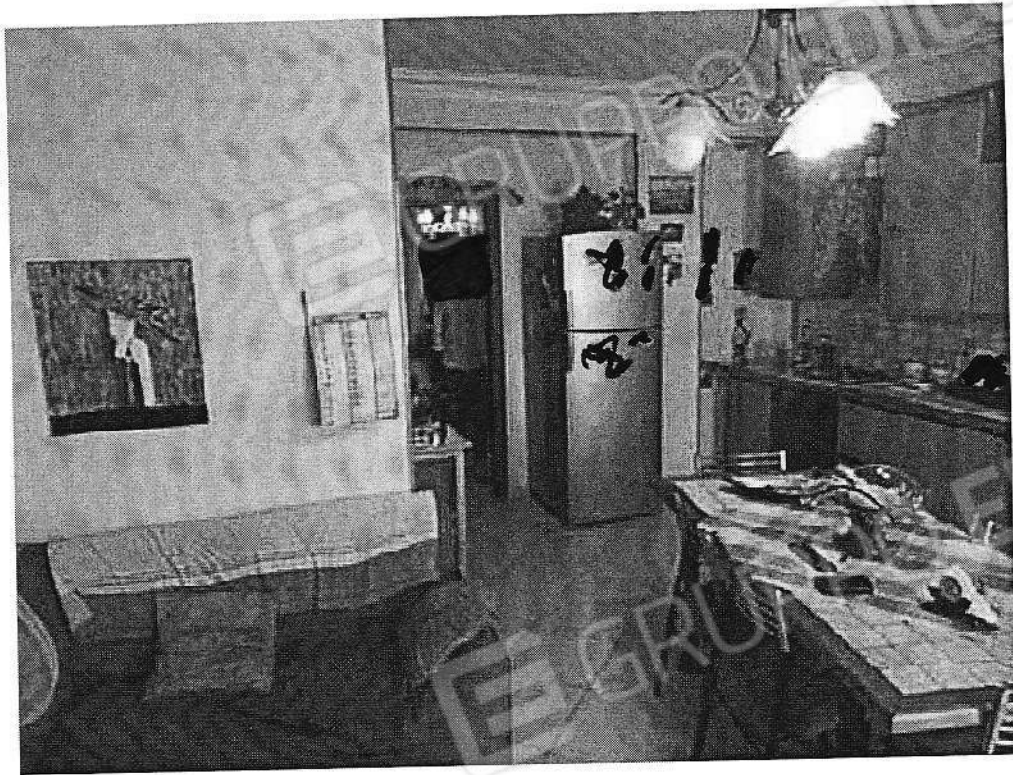


Foto 9



Foto 10





Foto 11



Foto 12



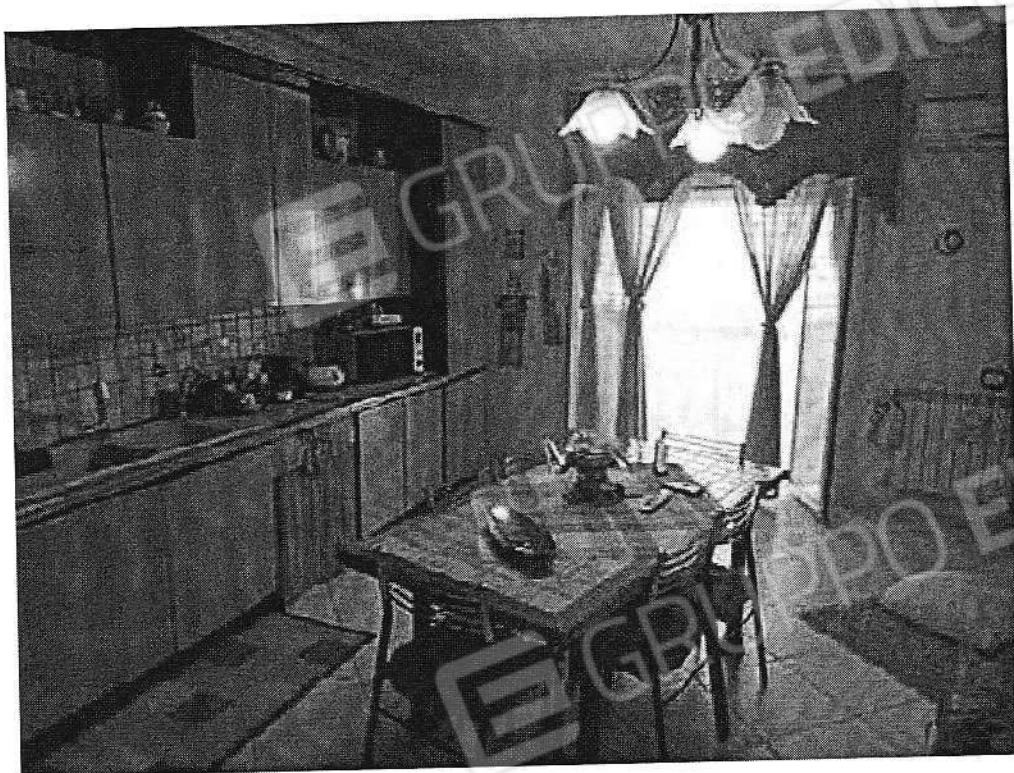


Foto 13



Foto 14





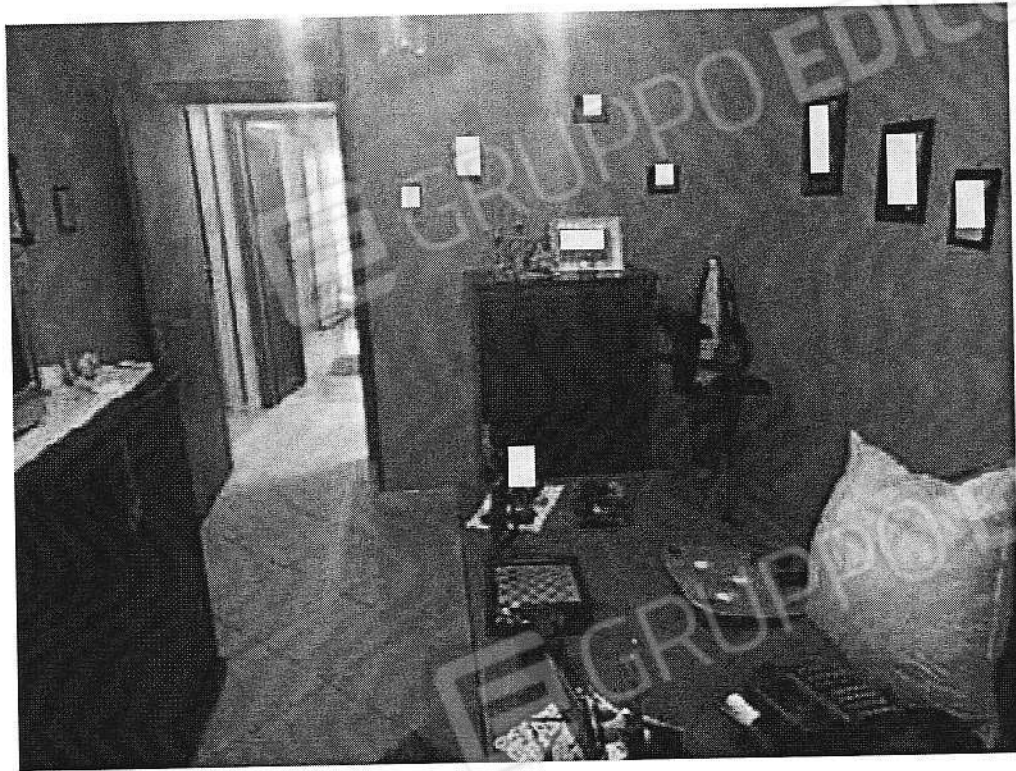


Foto 15

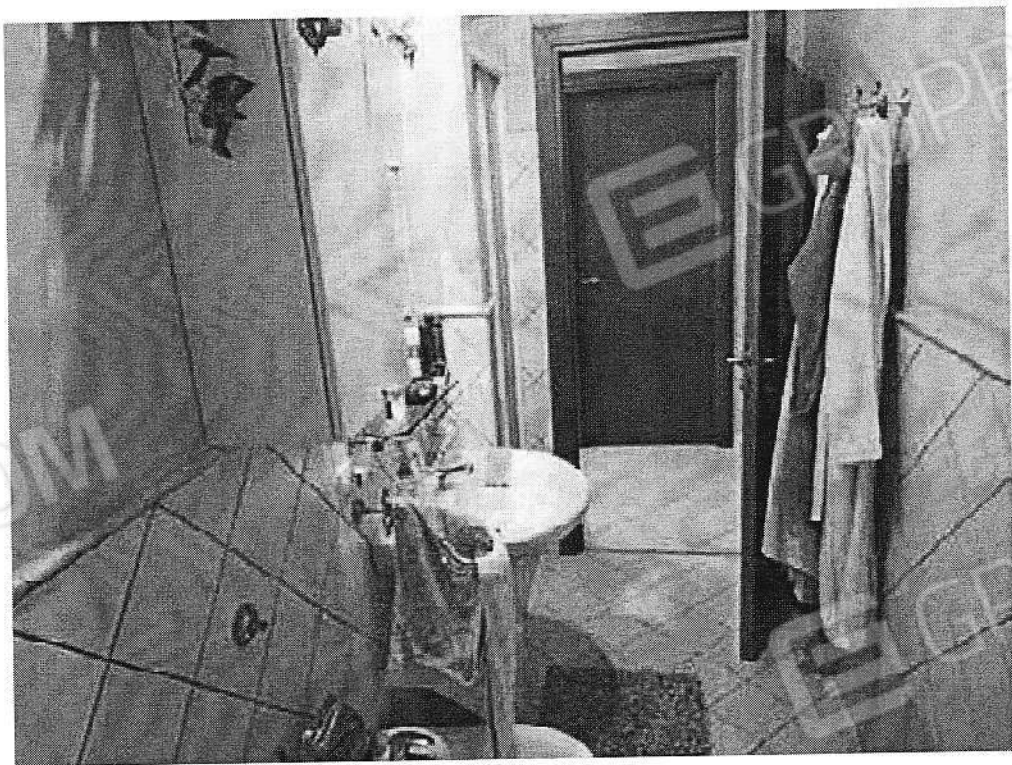


Foto 16





Foto 17

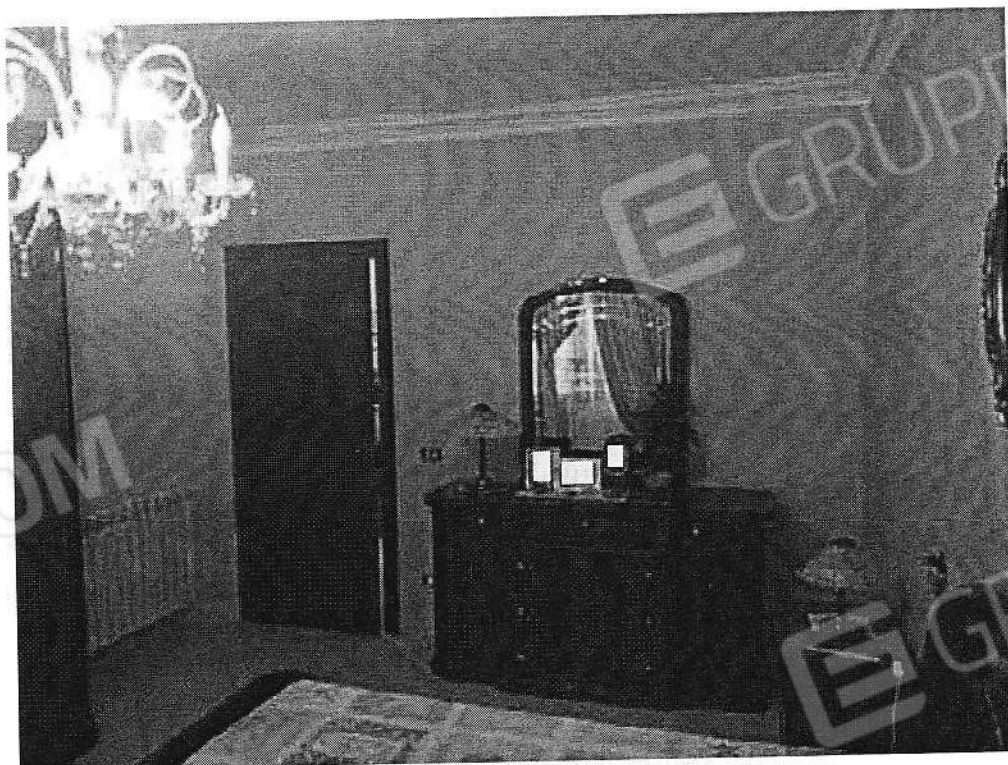


Foto 18





Foto 19

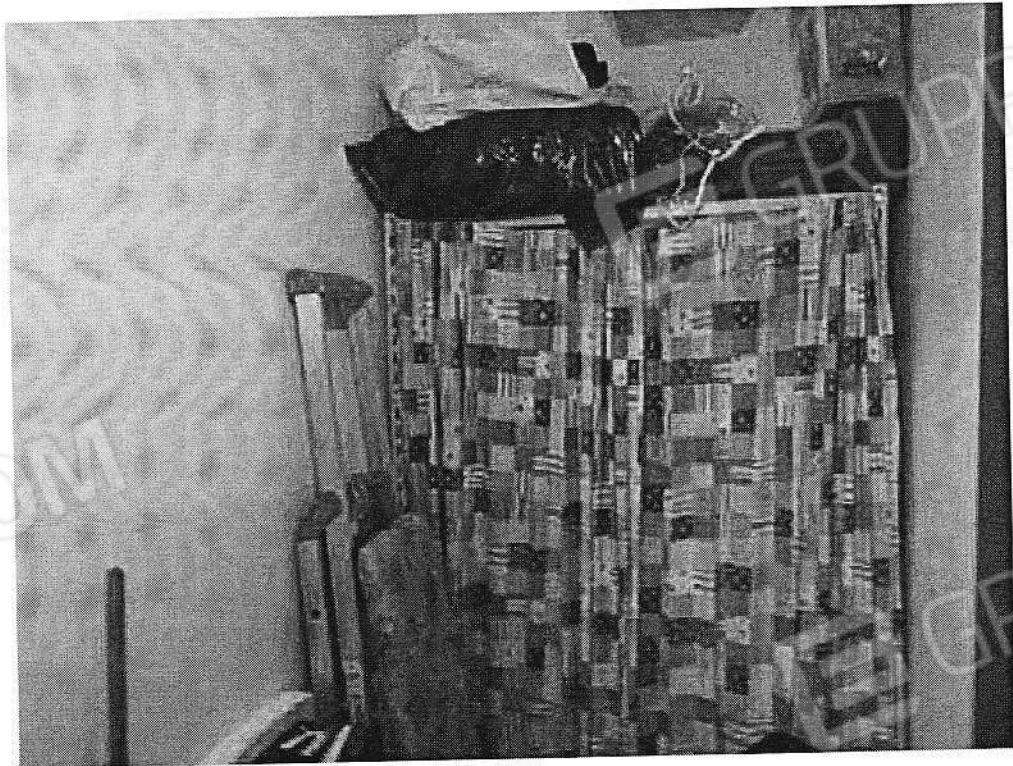


Foto 20



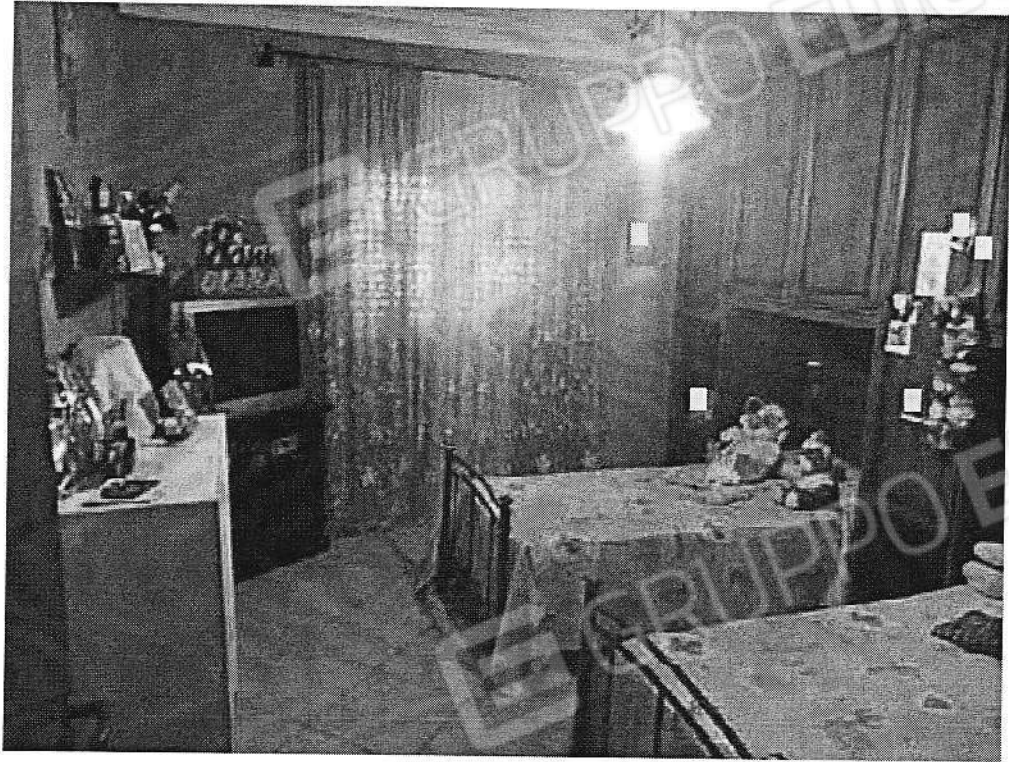


Foto 21



Foto 22



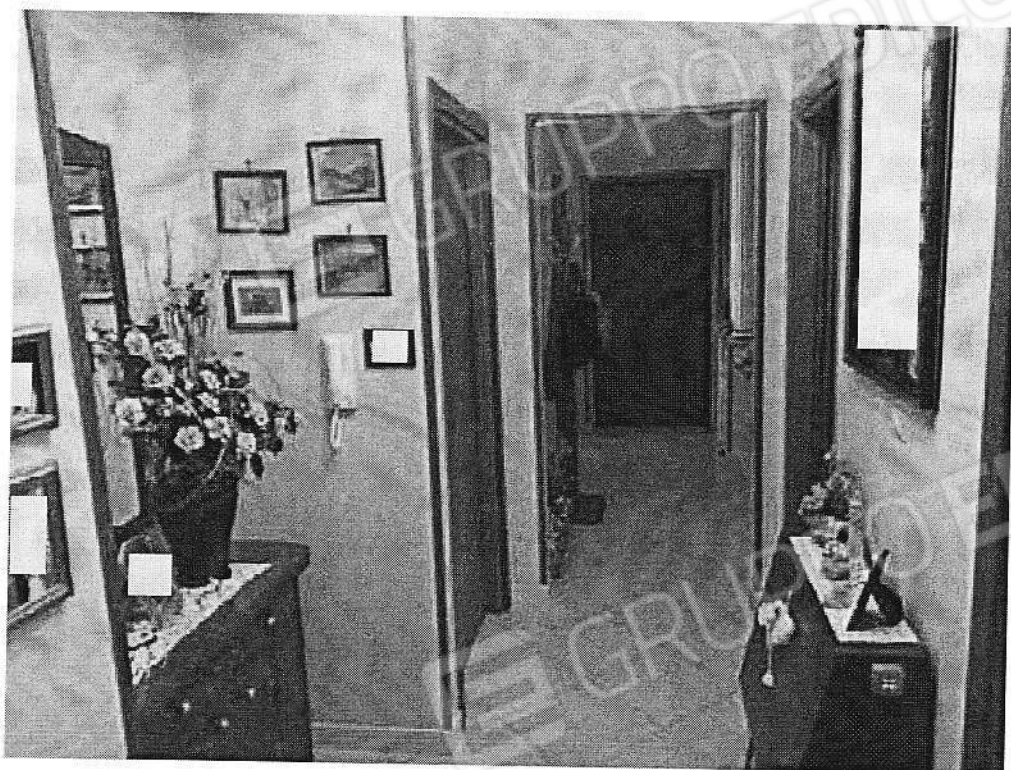


Foto 23

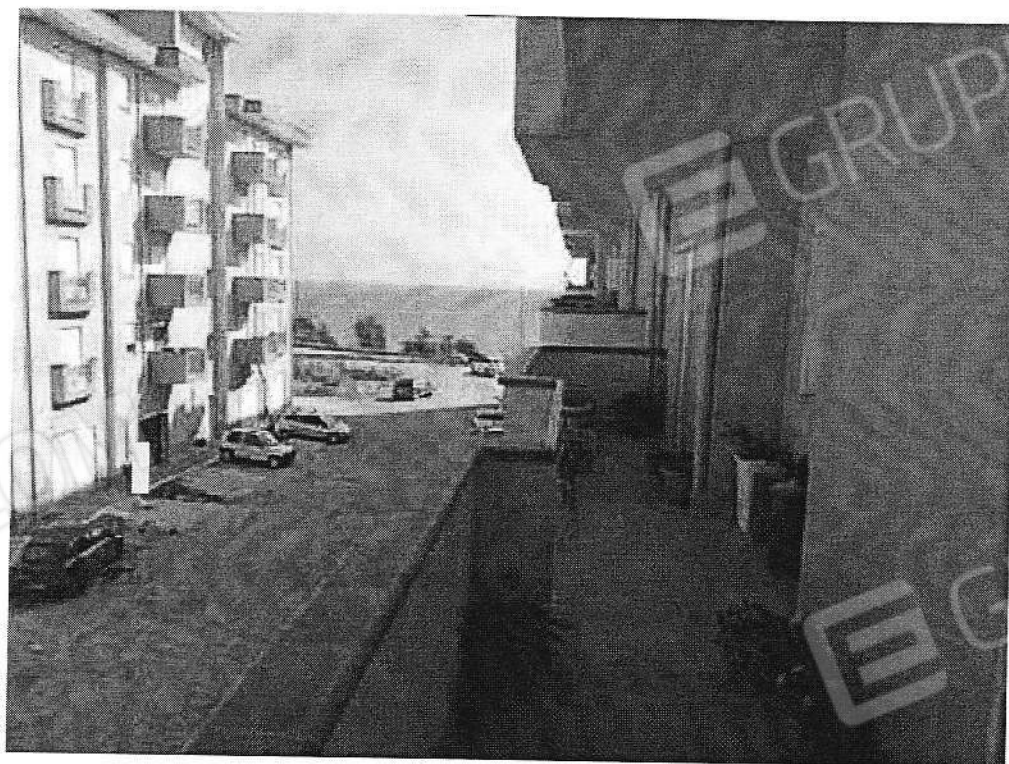


Foto 24





Foto 25

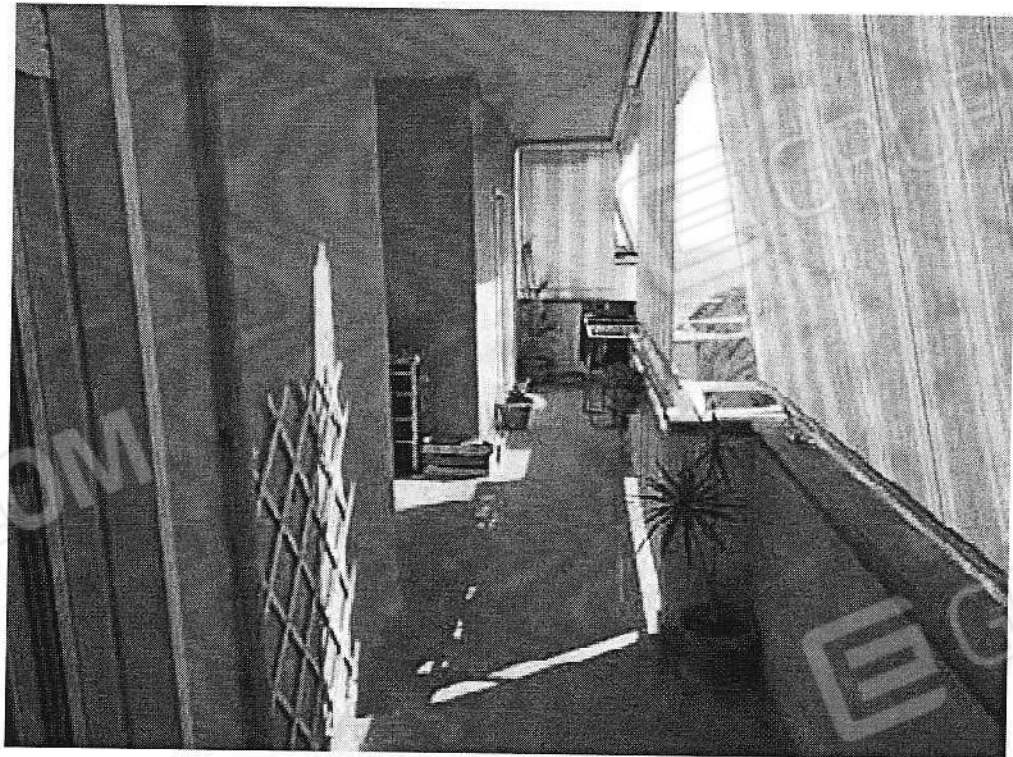


Foto 26



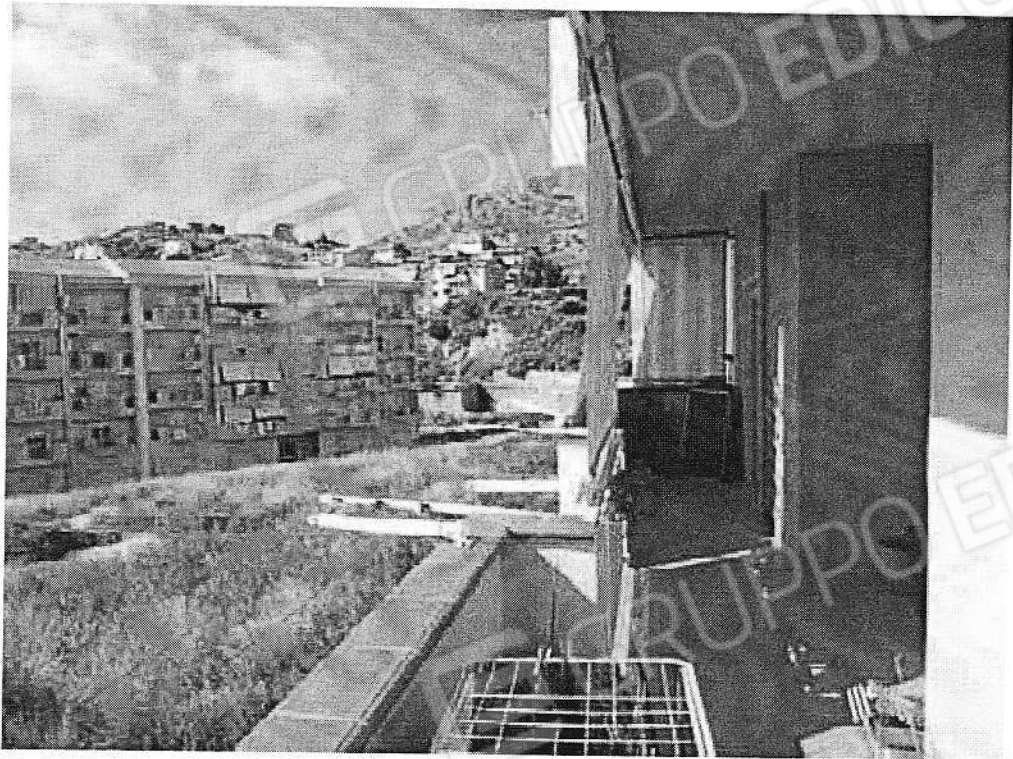


Foto 27



Foto 28



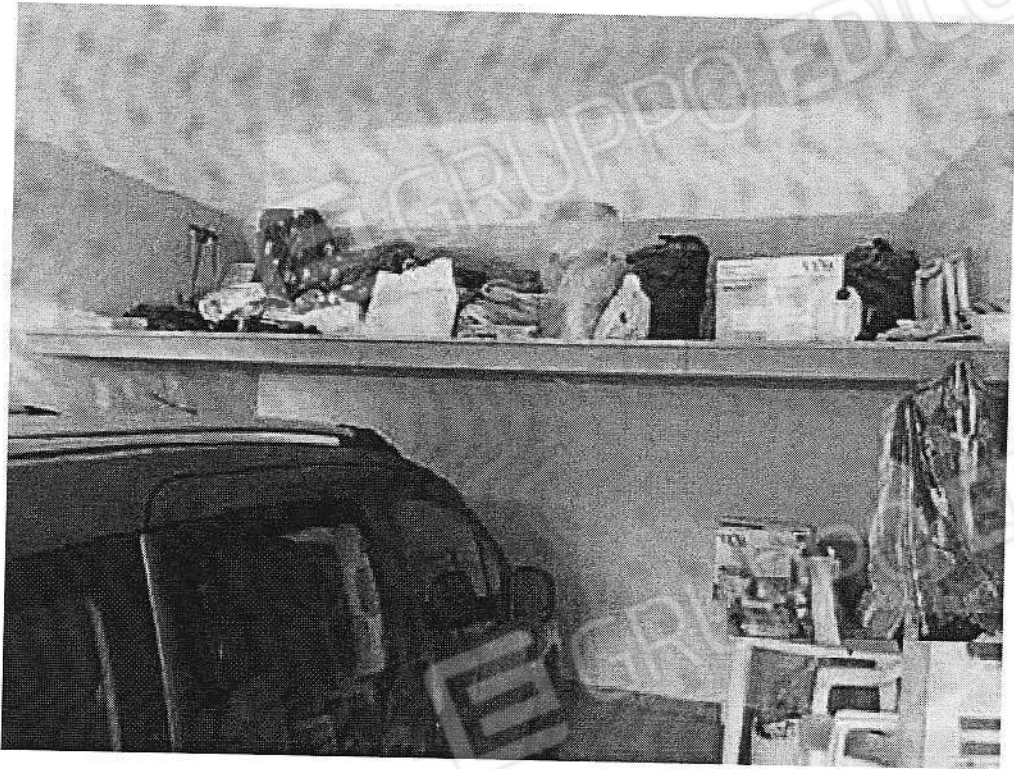


Foto 29

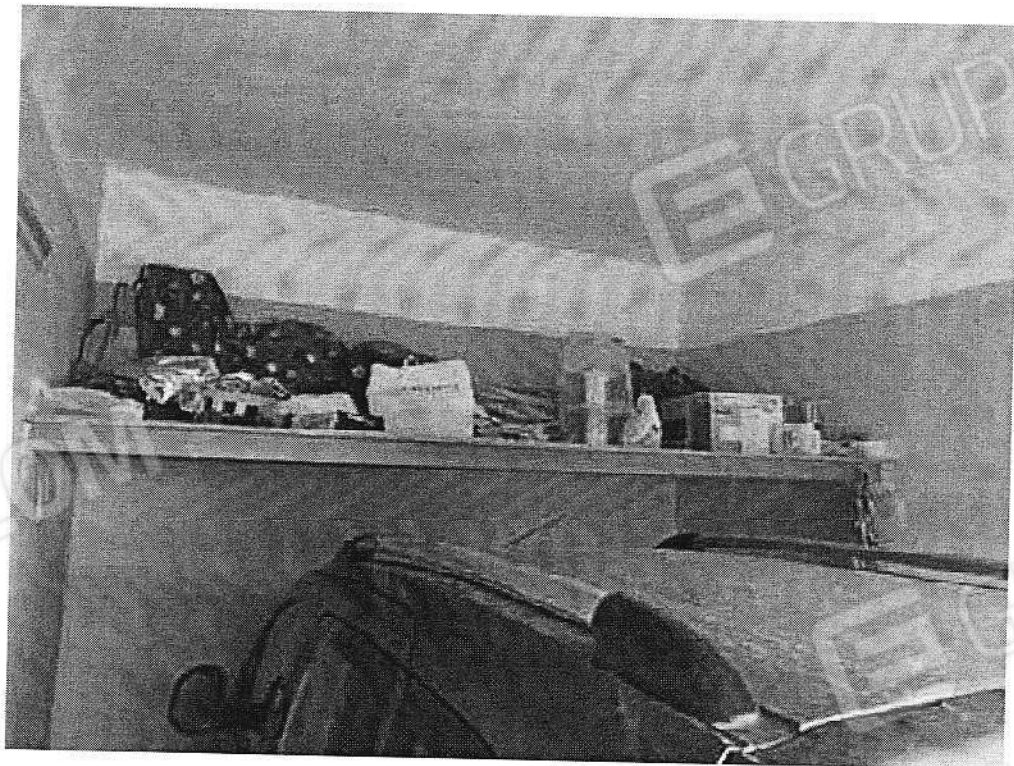


Foto 30

