



TRIBUNALE DI AGRIGENTO
CANCELLERIA ESECUZIONI

Proc. N° 176/2015

nella procedura esecutiva immobiliare
promossa dalla
COMMERFIDI SOC. COOP.
contro



ALLEGATO PLANIMETRIA LOTTO 1

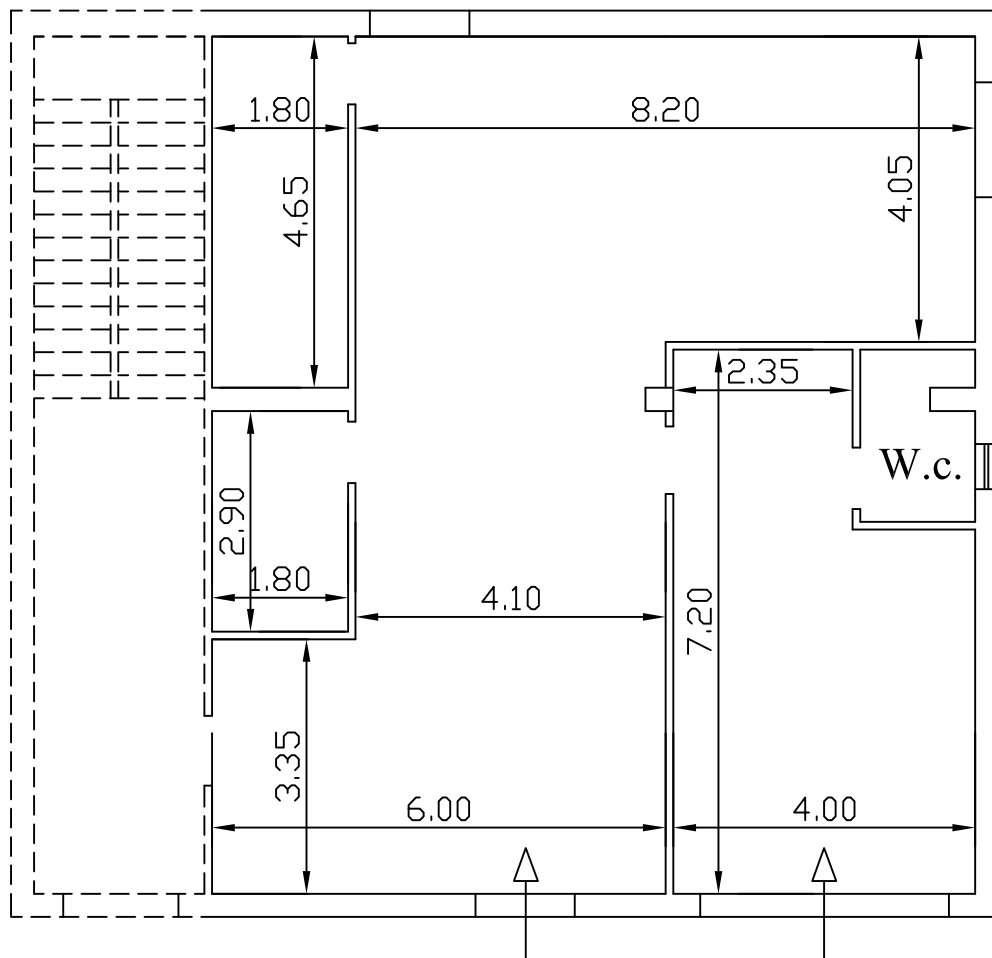


MAGAZZINO

Piano Terra

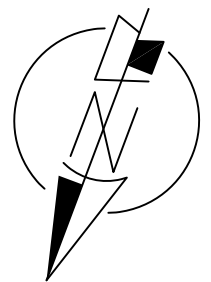
H. 3,30m.

Part 337



Part 894

Part 19



Disegni in Scala 1:100

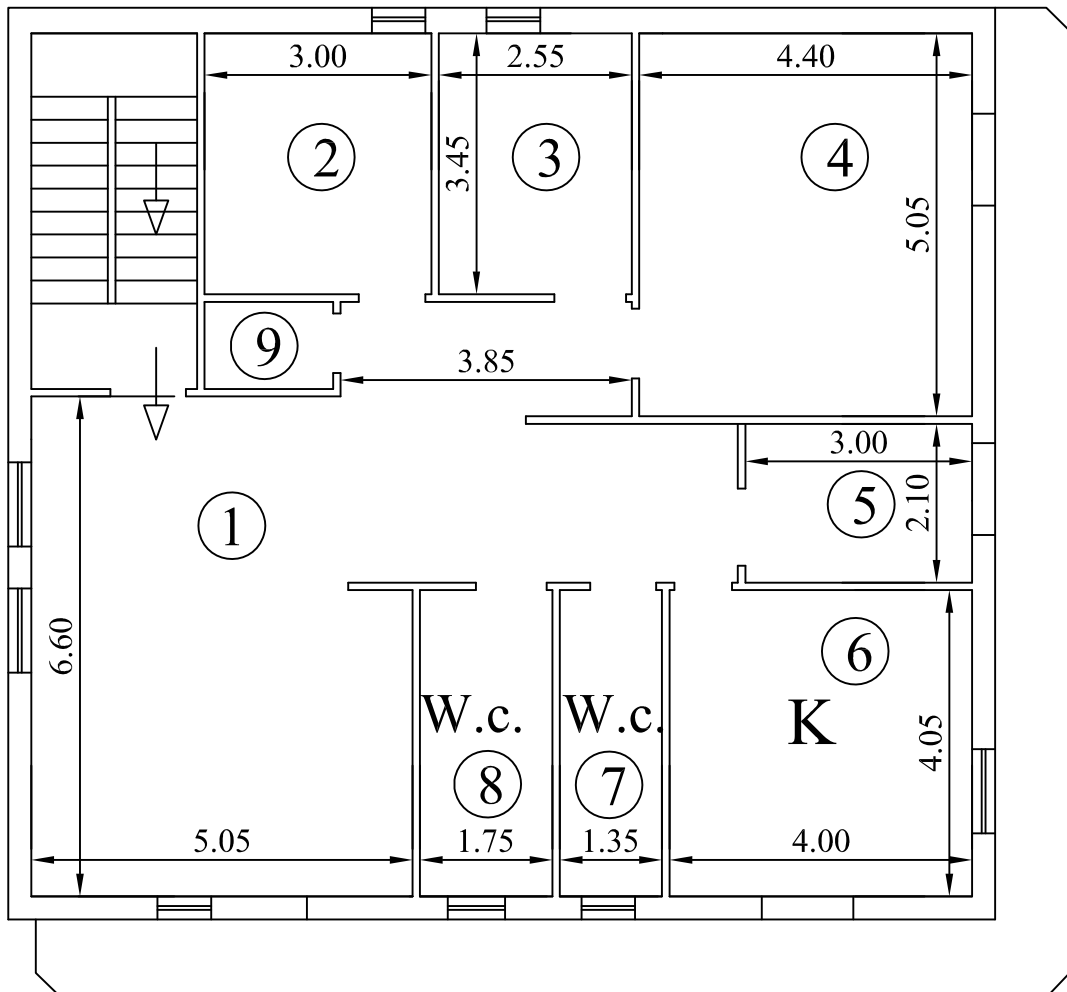


APPARTAMENTO

Piano Primo

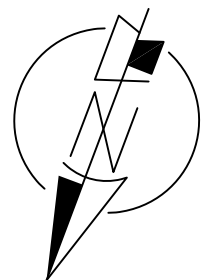
H. 2,95m.

Part 337



Part 894

Part 19



Disegni in Scala 1:100

