

**DOCUMENTAZIONE FOTOGRAFICA**

**ALL. 2**



**FOTO 1 – PROSPETTO SU VIA FULCI**



**FOTO 2 – PROSPETTO SU VIA FULCI**



**FOTO 3 – RIPOSTIGLIO – PIANO TERRA**



**FOTO 4 – CANTINA – PIANO TERRA**



**FOTO 5 – SOGGIORNO – PIANO RIALZATO**



**FOTO 6 – CUCINA – PIANO RIALZATO**



**FOTO 7 – RIPOSTIGLIO – PIANO RIALZATO**



**FOTO 8 – BAGNO – PIANO RIALZATO**



**FOTO 9 – DISIMPEGNO – PIANO RIALZATO**



**FOTO 10 – TERRAZZO -PIANO RIALZATO**



**FOTO 11 – TERRAZZO – PIANO RIALZATO**



**FOTO 12 – CAMERA – PIANO PRIMO**



**FOTO 13 – CAMERA - PIANO PRIMO**



**FOTO 14 – BAGNO – PIANO PRIMO**



**FOTO 15 – DISIMPEGNO – PIANO PRIMO**



**FOTO 16 – BALCONE – PIANO PRIMO**





**FOTO 17 – DEPOSITO – PIANO SOTTOTETTO**



**FOTO 18 – DEPOSITO – PIANO SOTTOTETTO**

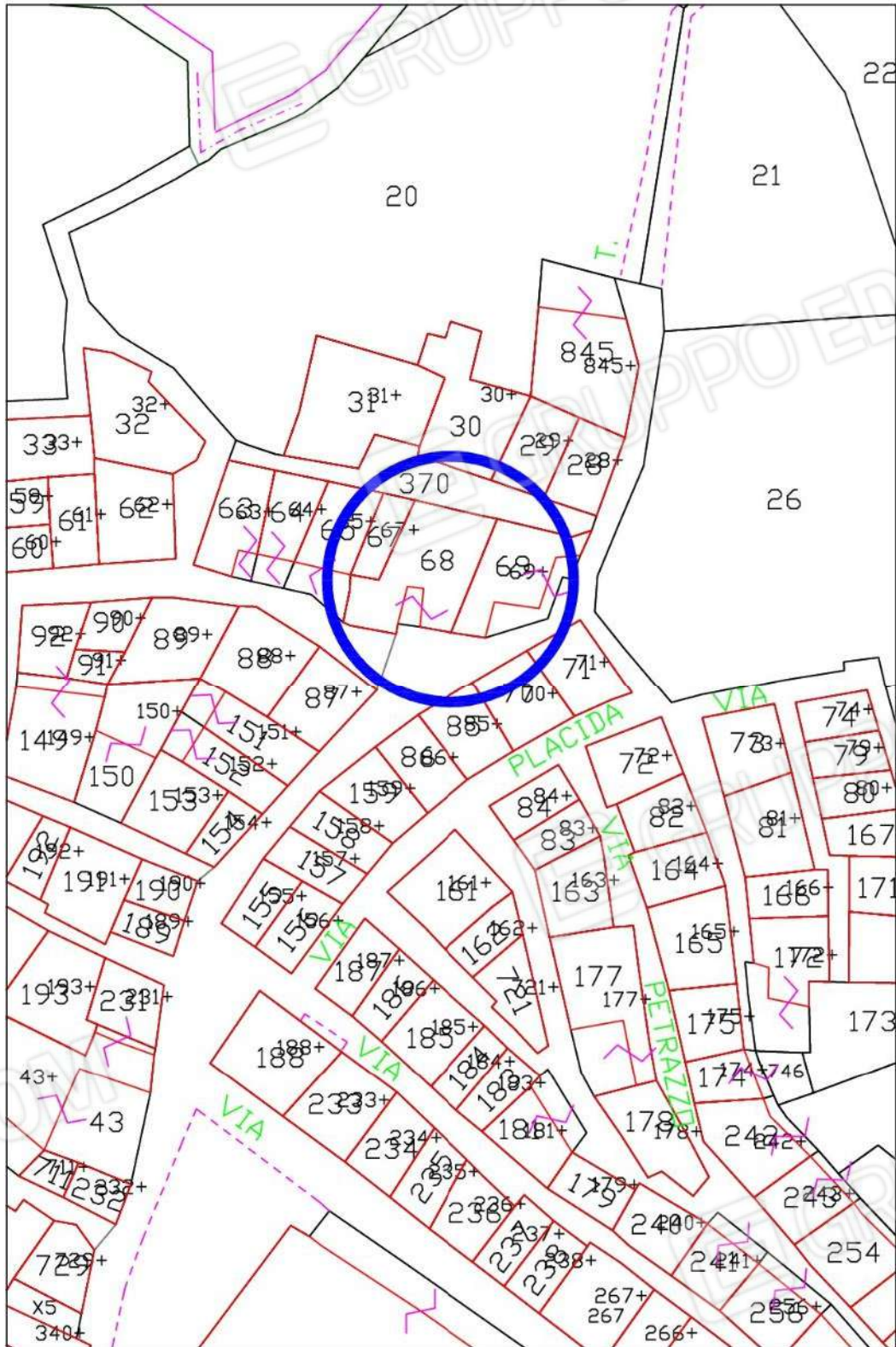


**FOTO 19 – BAGNO – PIANO SOTTOTETTO**

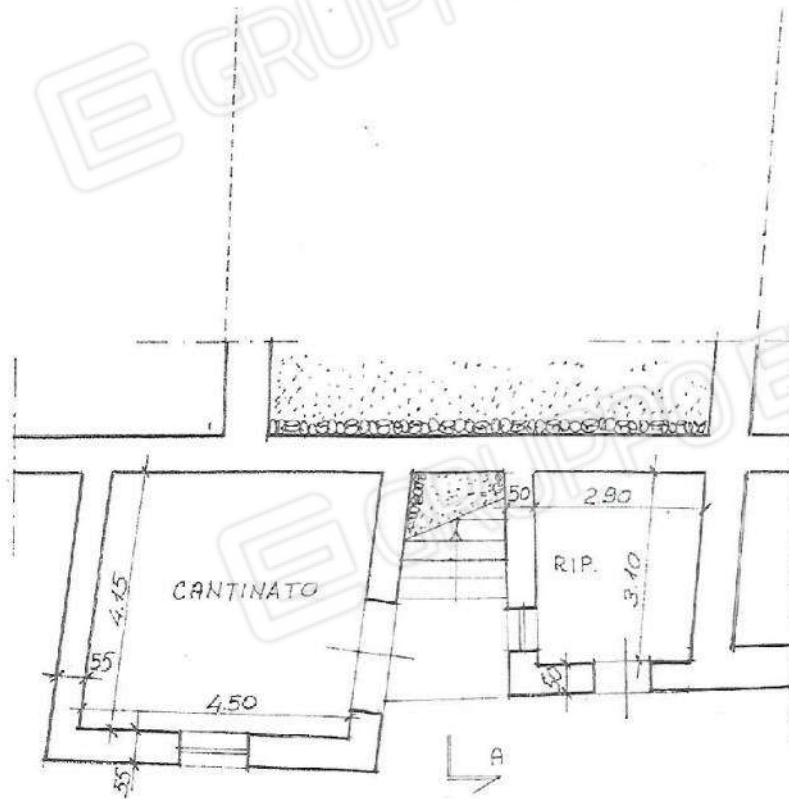


**FOTO 20 – TERRAZZINO PIANO SOTTOTETTO**

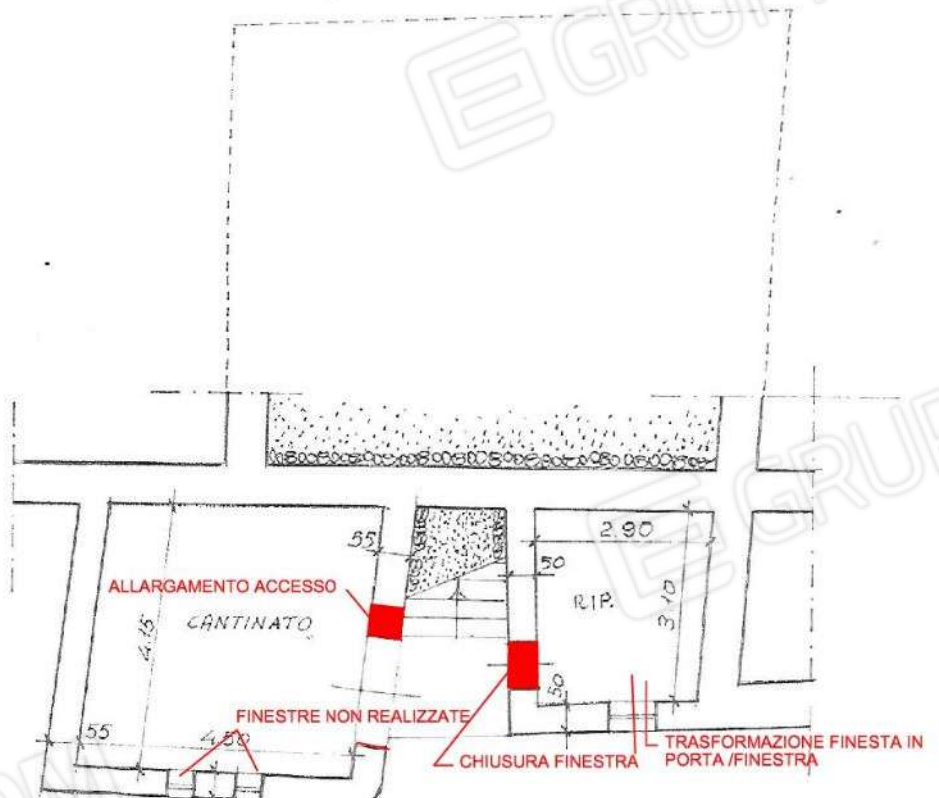
ALL. 4



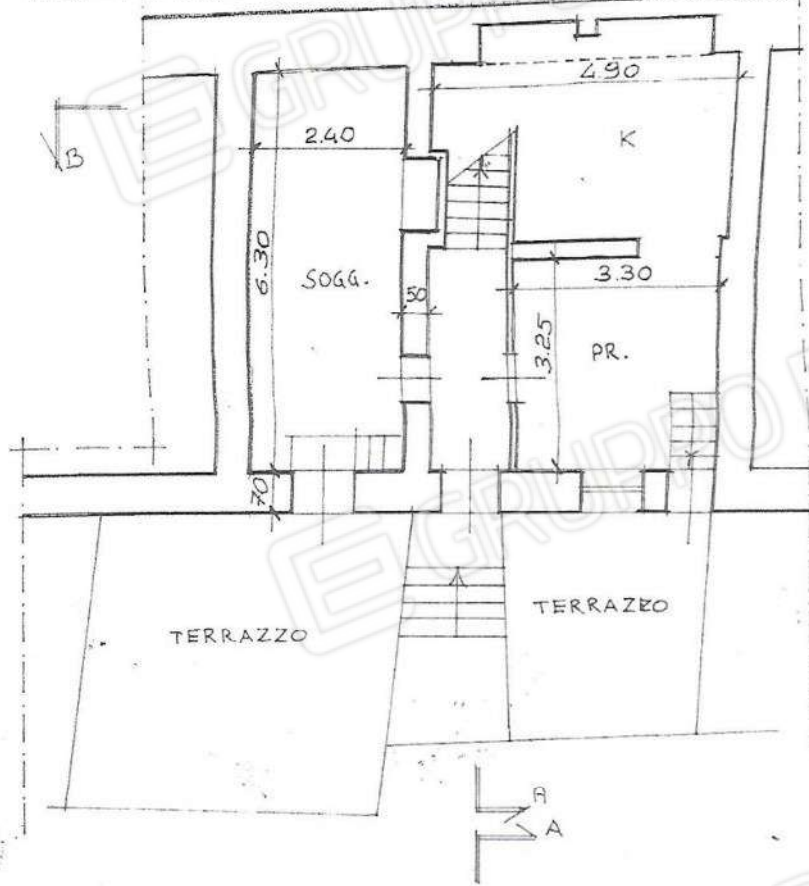
ALL. 5



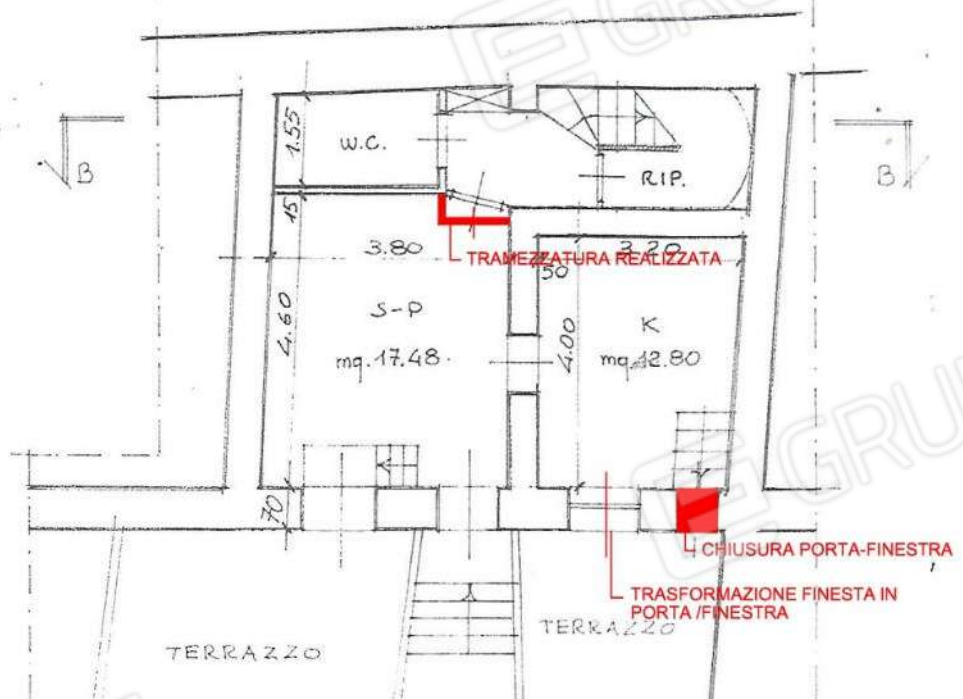
PIANTA PIANO TERRA (PROGETTO) 1:100



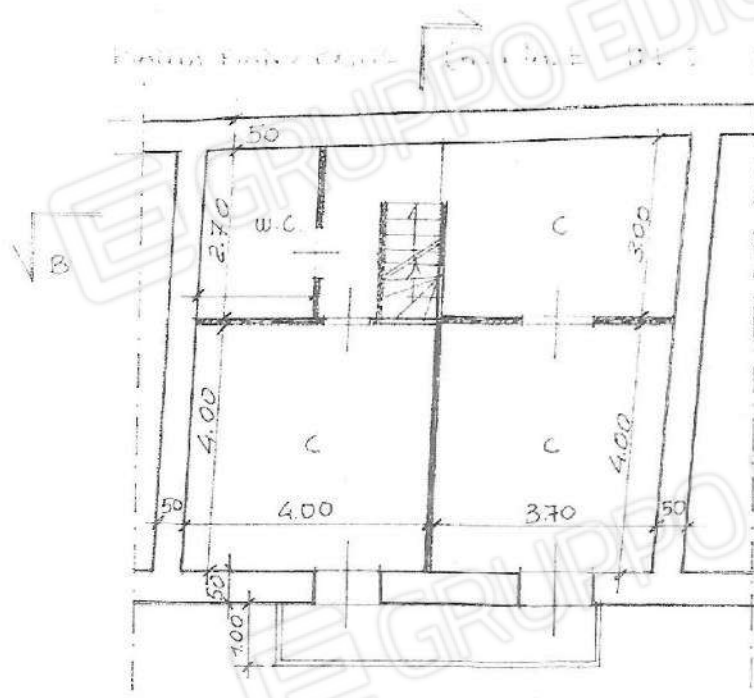
PIANTA PIANO RIALZATO (ATTUALE) 1:100



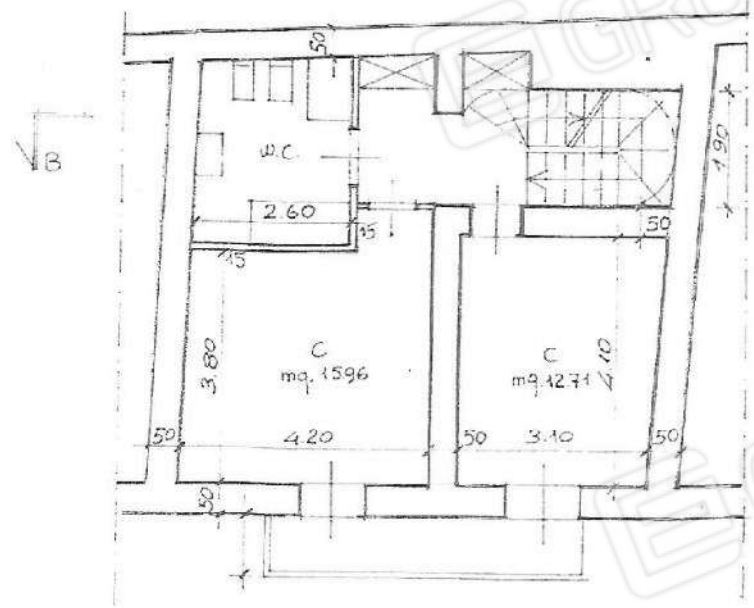
PIANTA PIANO RIALZ. (PROGETTO) 1:100



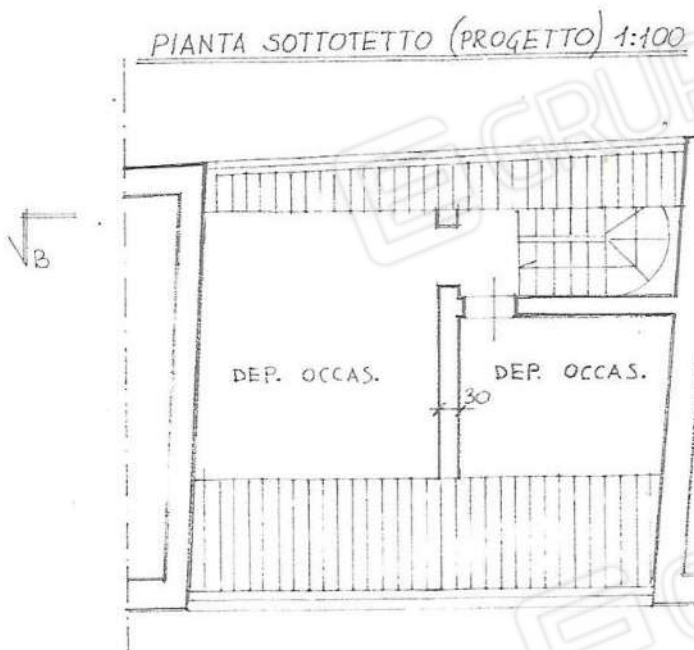
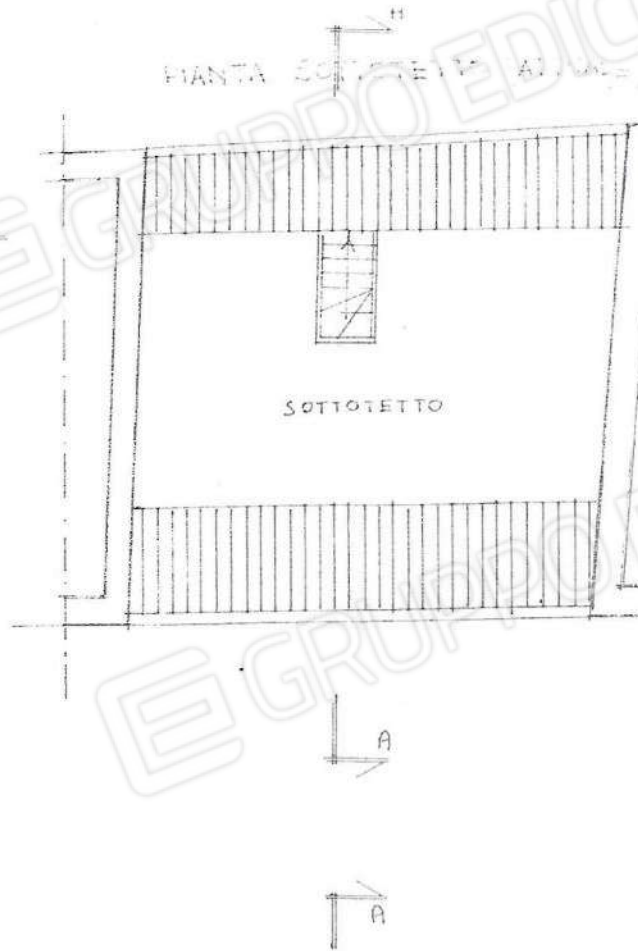
**PIANO RIALZATO DA PROGETTO ED ATTUALE**



PIANTA PIANO PRIMO 1:100 (PROGETTO)



**PIANO PRIMO DA PROGETTO ED ATTUALE**



**PIANO SOTTOTETTO DA PROGETTO**

