

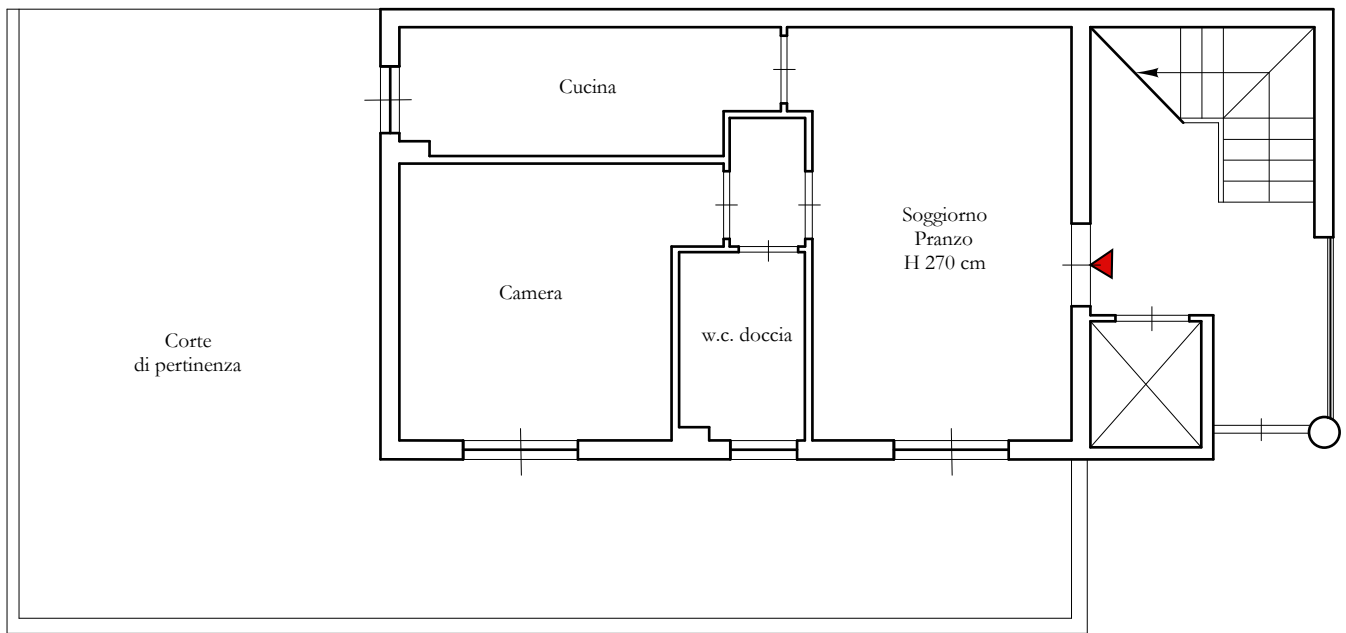
PLANIMETRIA ATTUALE

VIA BADIA N. 259/A-259/B - PALERMO
SCALA B Piano Terra - Foglio 39, P.lla 4597, sub 10

ALLEGATO
PLANIMETRIA
LOTTO 1

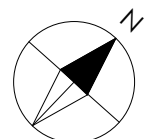
P.LLA 1745

SPAZI CONDOMINIALI COMUNI
SUB 1



SPAZI CONDOMINIALI COMUNI
SUB 1

SUPERFICIE LORDA	55,00 mq
SUPERFICIE CORTE ESTERNA	57,00 mq
SUPERFICIE POSTO AUTO	12,50 mq
SUP. COMMERCIALE =	
$55,00 + (25,00 \times 10\%) + (32,00 \times 2\%) + (12,50 \times 20\%)$	
=	60,64 mq



Scala 1:100