

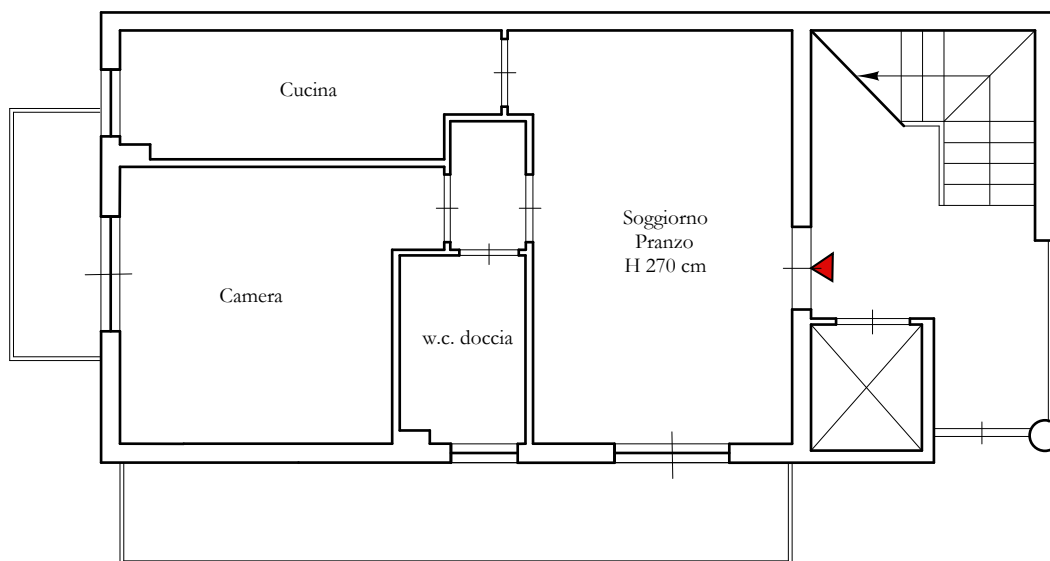
PLANIMETRIA ATTUALE

VIA BADIA N. 259/A-259/B - PALERMO
SCALA B Piano Quarto - Foglio 39, P.lla 4597, sub 14

ALLEGATO
PLANIMETRIA
LOTTO 5

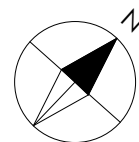
P.LLA 1745

SPAZI CONDOMINIALI COMUNI
SUB 1



SPAZI CONDOMINIALI COMUNI
SUB 1

SUPERFICIE LORDA		55,00 mq
SUPERFICIE BALCONI	$3,95 + 12,00 =$	15,95 mq
SUPERFICIE POSTO AUTO		12,50 mq
SUP. COMMERCIALE =		
$55,00 + (15,95 \times 25\%) + (12,50 \times 20\%) =$		61,49 mq



Scala 1:100