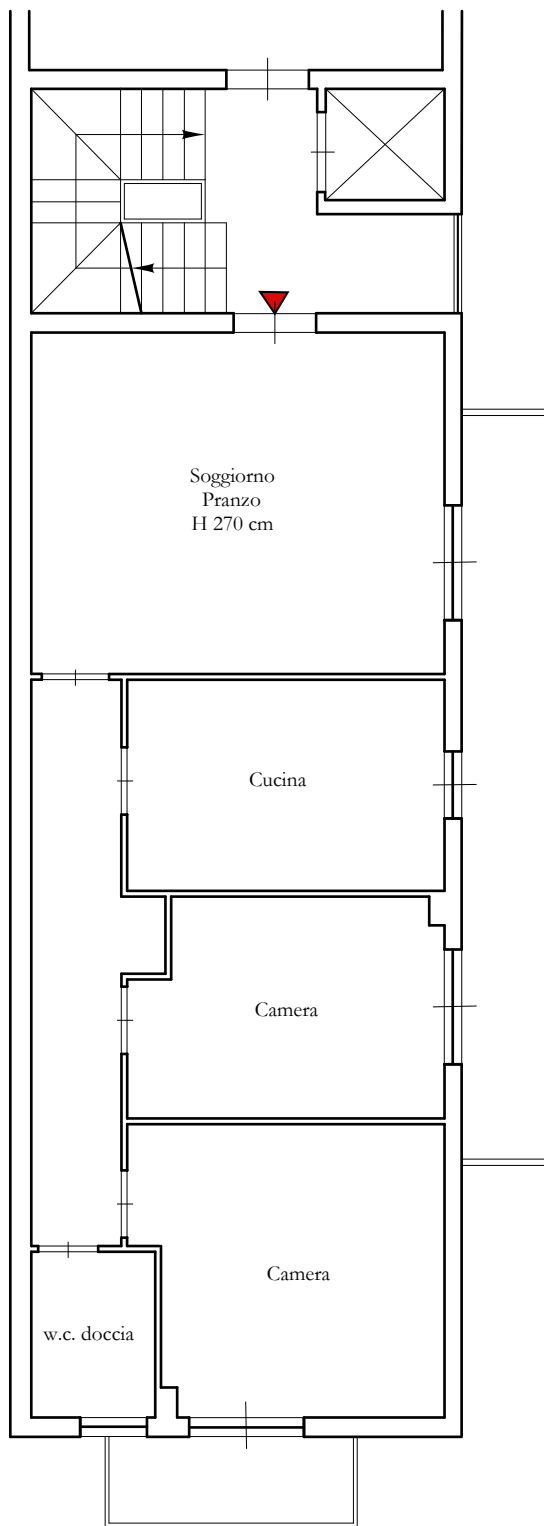


PLANIMETRIA ATTUALE

VIA BADIA N. 259/A-259/B - PALERMO
SCALA E Piano Quarto- Foglio 39, P.la 4597, sub 51

ALLEGATO
PLANIMETRIA
LOTTO 26



SPAZI CONDOMINIALI COMUNI
SUB 1

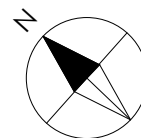
SUP. LORDA 88,00 mq

SUP. BALCONI $3,95 + 12,20 =$
16,15 mq

SUP. POSTO AUTO = 12,50 mq

SUP. COMMERCIALE =
 $88,00 + (16,15 \times 25\%) + (12,50 \times 20\%) =$
94,53 mq

SUB 1



Scala 1:100