

TRIBUNALE DI PALERMO

SEZIONE IMMOBILIARE

G. Es.: Dott.
LA BARBERA MARIA CRISTINA

Riferimento :
Grotto S.p.a.
contro



R.Es. 253-2021

LOTTO UNICO

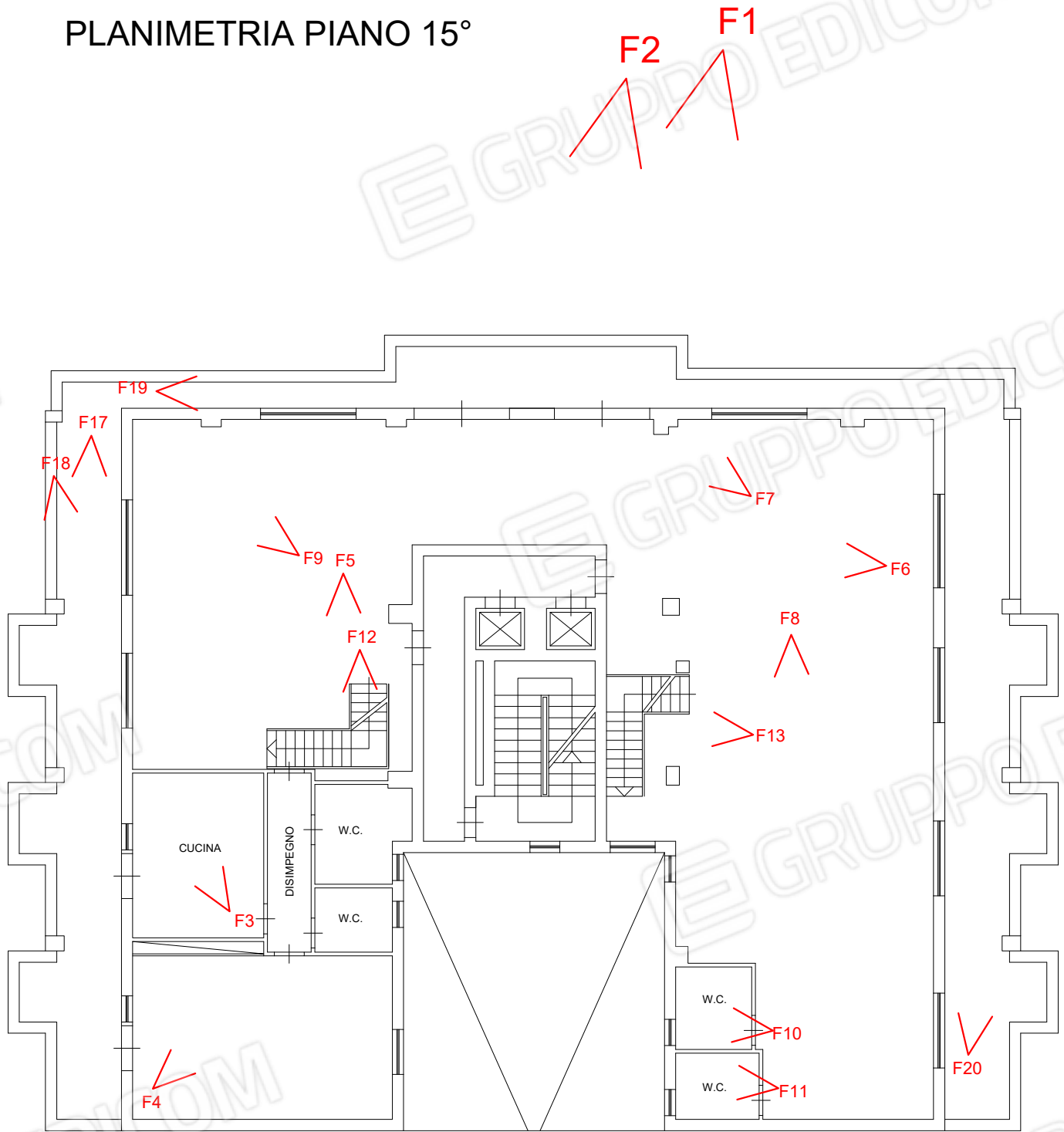
Documentazione Fotografica

Consulente Tecnico d'Ufficio:
Dott. Arch. Salvatore Corsale

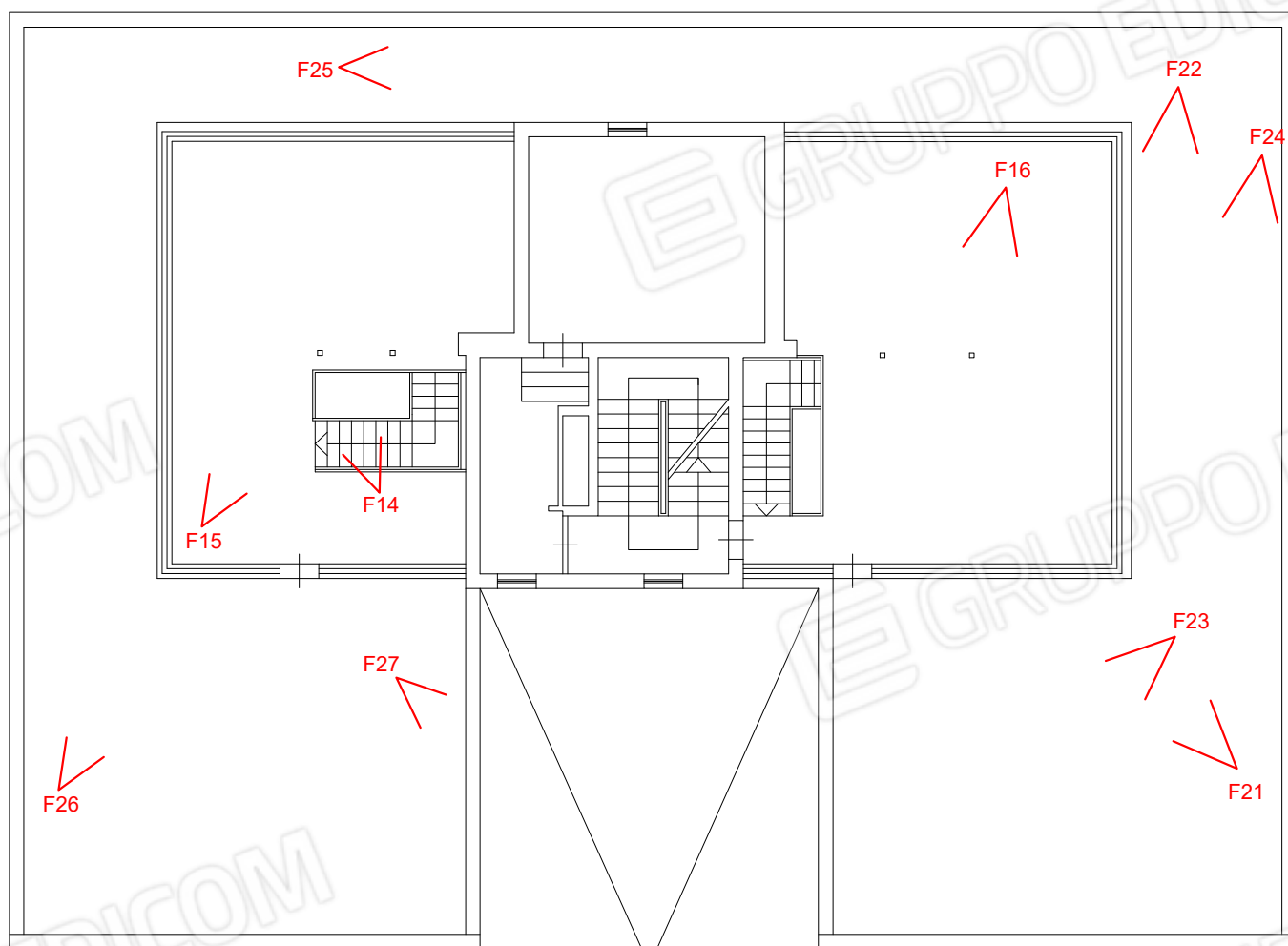


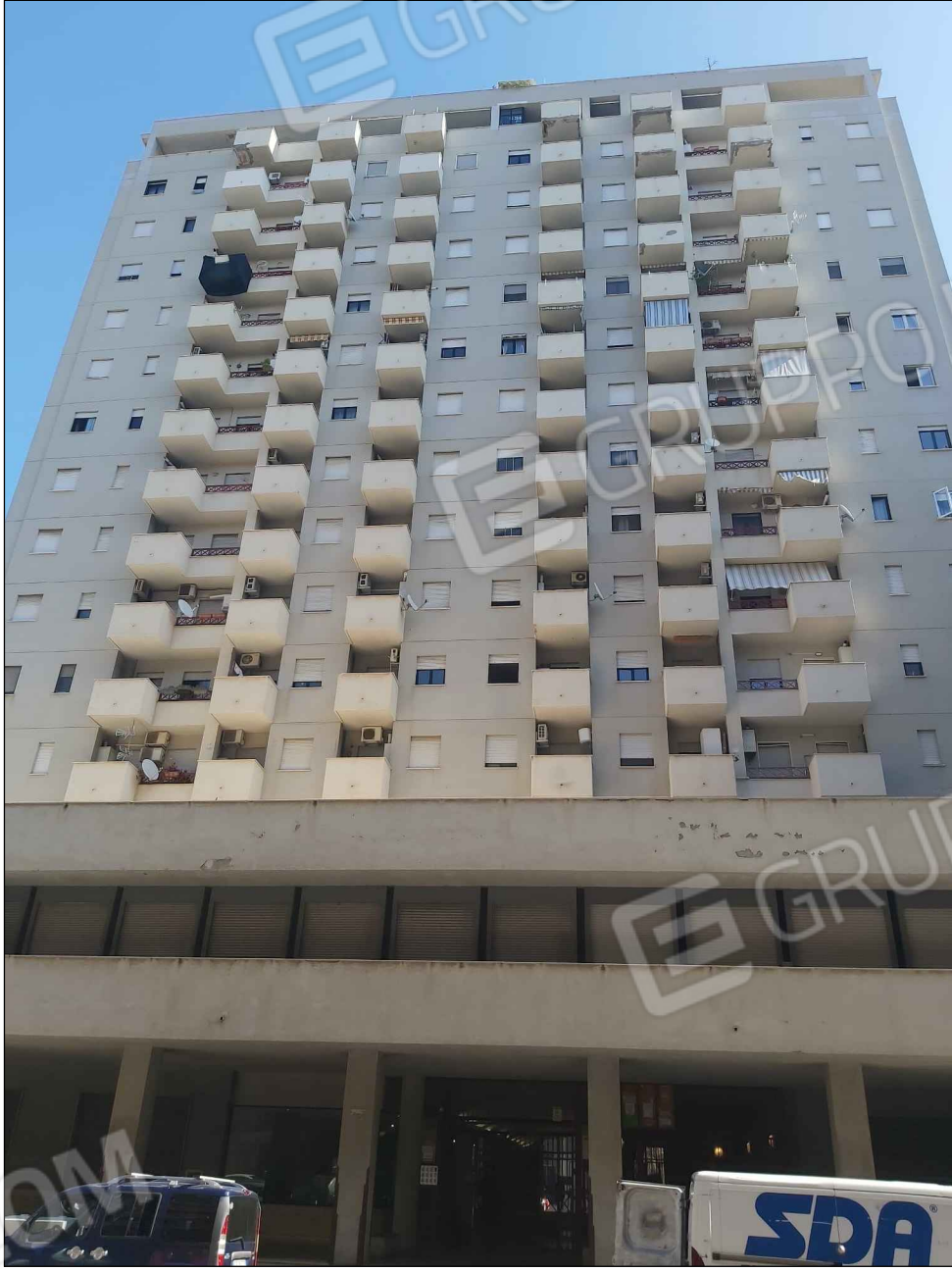
Palermo 18.10.2023

PLANIMETRIA PIANO 15°



PLANIMETRIA PIANO 16°





F1



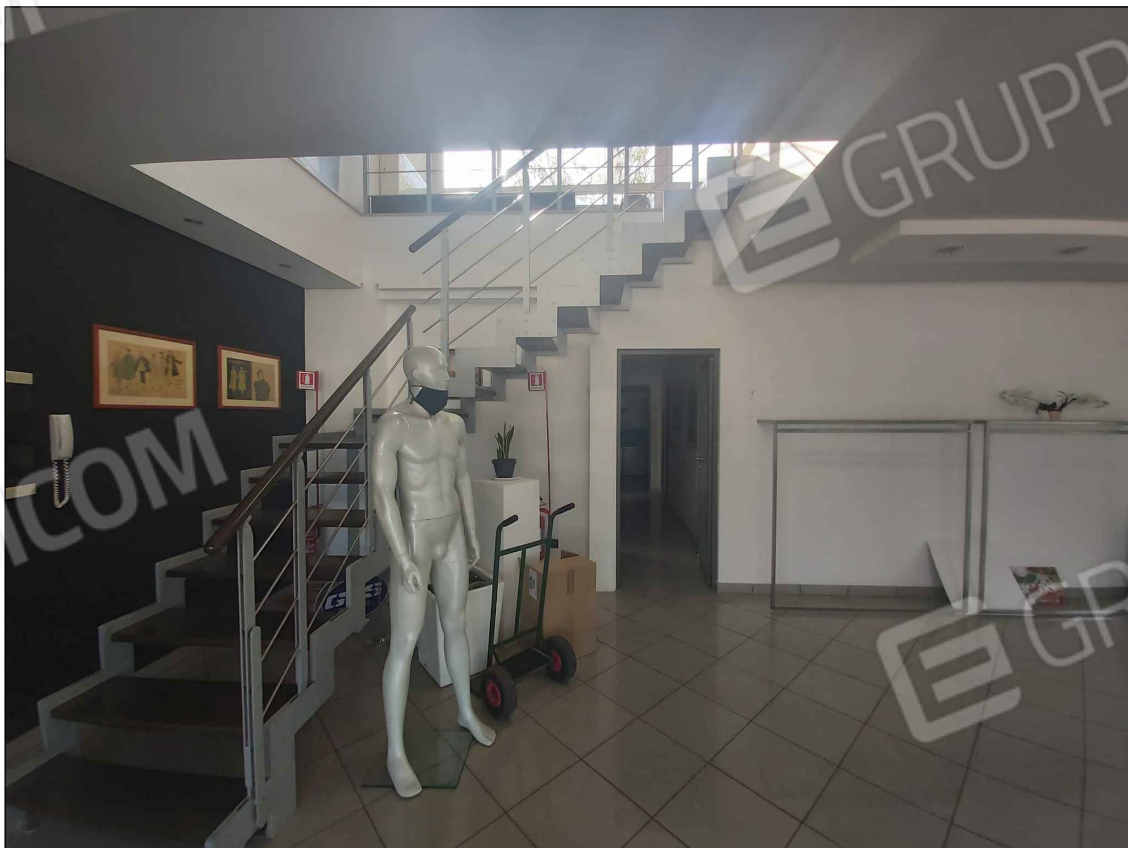
F2



F3



F4



F5



F6



F7



F8



F9



F10



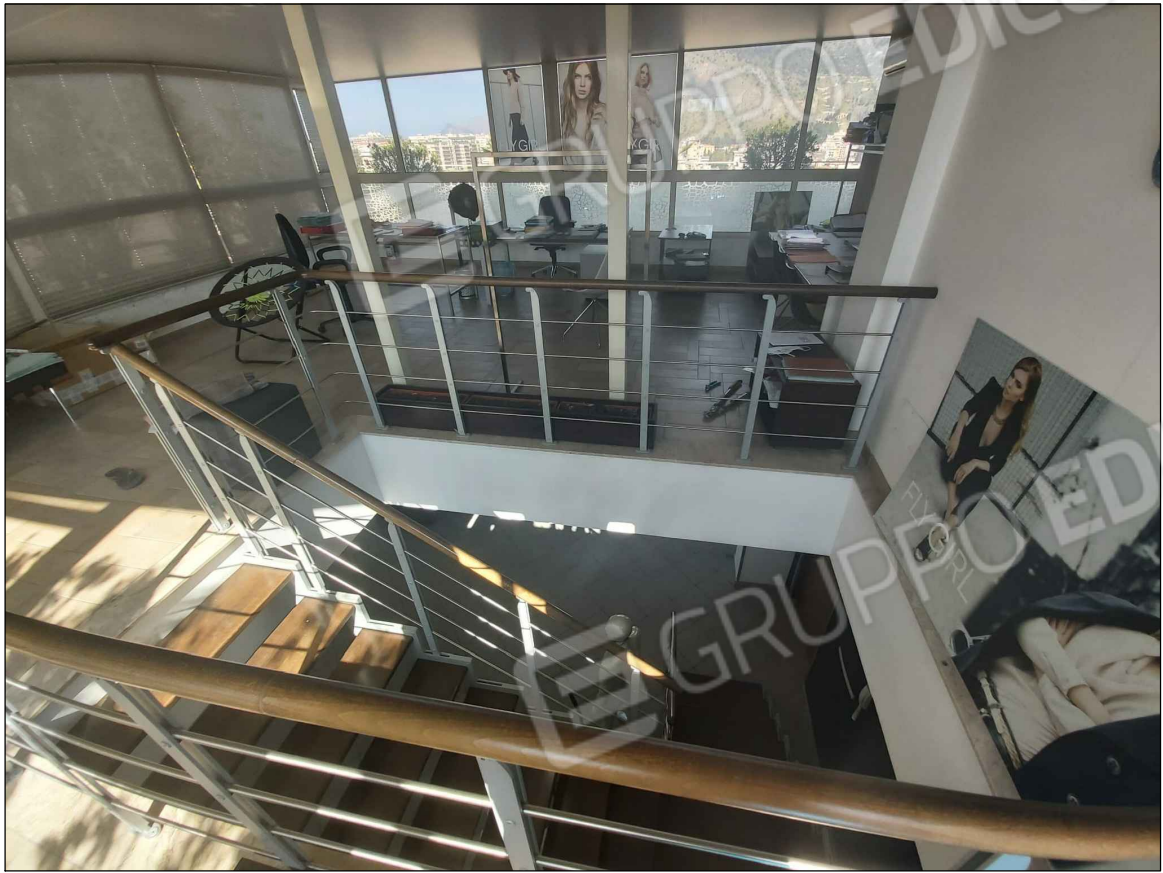
F11



F12



F13



F14



F15



F16



F17



F18



F19



F20



F21



F22



F23



F24



F25



F26



F27