



Fig. 1 Individuazione del fabbricato, Via Cotogni Bagheria (PA).



Fig. 2, 3 Rampa carrabile e area parcheggio.



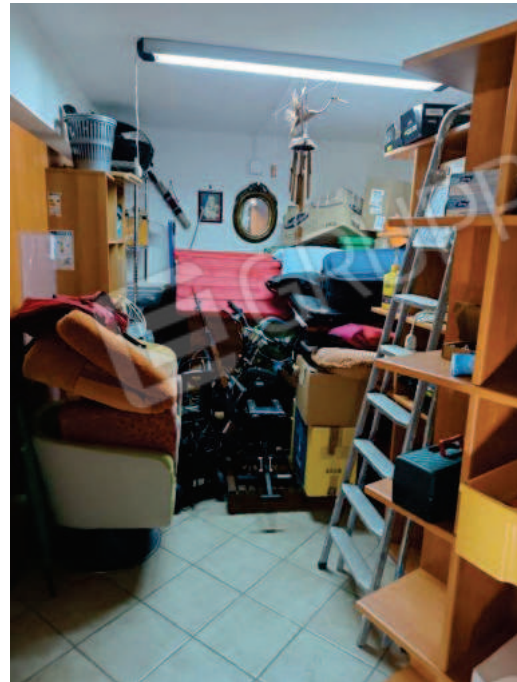
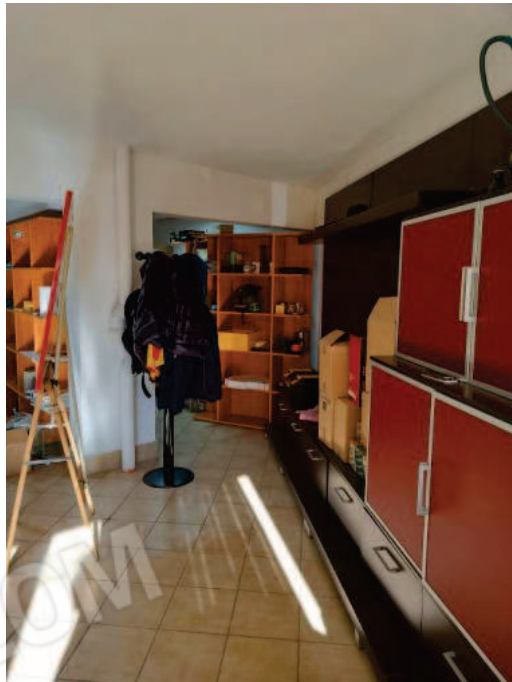
Fig. 4 Individuazione magazzino.



Fig. 5 Porta d'ingresso.



Fig. 6 Locale deposito.



Figg. 7, 8, 9 Locale deposito.



Fig. 10 Servizio igienico.



Fig. 11 Pompa di calore.



Fig. 12, 13 Scarichi condominiali.



Fig. 14 Parete ingresso wc.

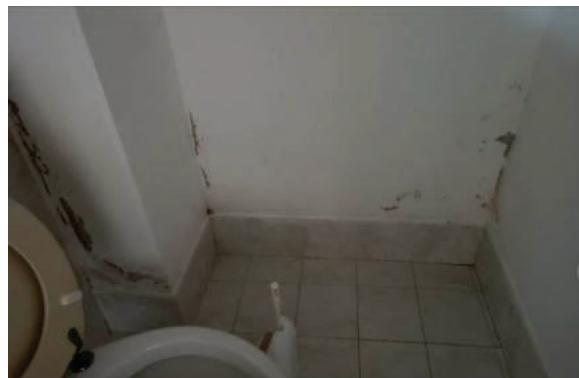


Fig. 15 Parete wc.