

# PLANIMETRIA ATTUALE

VIA BADIA N. 259/A-259/B - PALERMO  
 SCALA D Piano Secondo - Foglio 39, P.lla 4597, sub 35

ALLEGATO  
 PLANIMETRIA  
 LOTTO 13

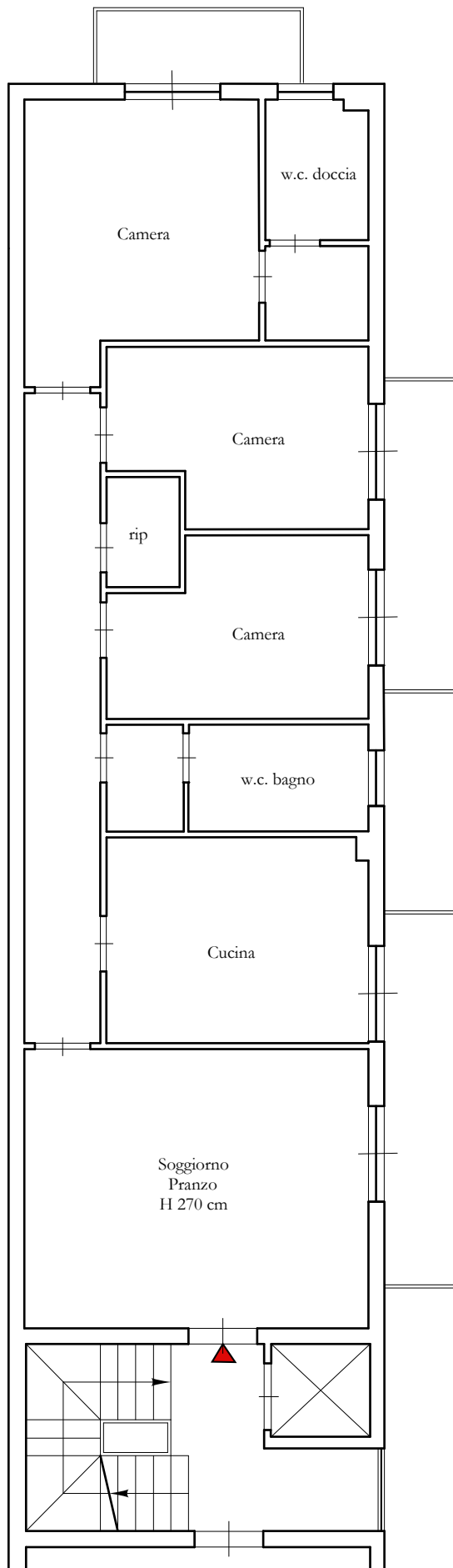
SUB 1

P.LLA 2528

P.LLA 5900

P.LLA 5901

P.LLA 5902



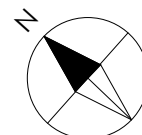
SPAZI CONDOMINIALI COMUNI  
 SUB 1

SUP. LORDA 118,00 mq

SUP. BALCONI  $5,95 + 7,10 + 4,00 = 17,05$  mq

SUP. POSTO AUTO = 12,50 mq

SUP. COMMERCIALE =  $118,00 + (17,05 \times 25\%) + (12,50 \times 20\%) = 124,76$  mq



Scala 1:100