



FOTO 1 - accesso carrabile principale all'impianto sportivo da Via Pirandello

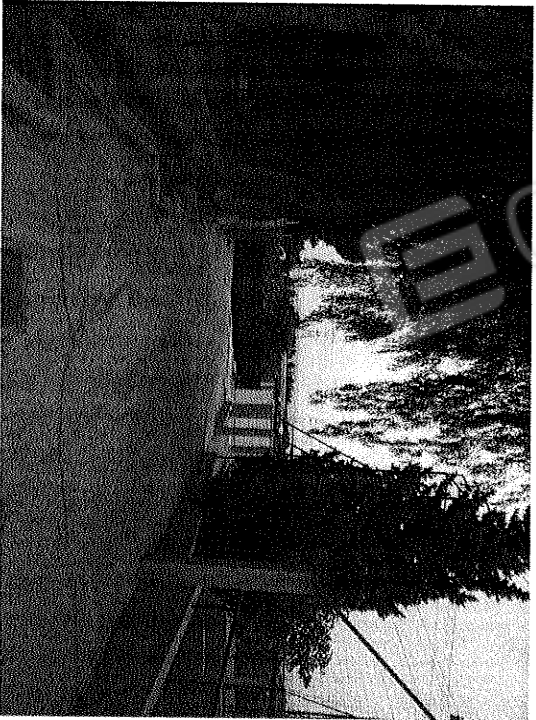


FOTO 2 - secondo accesso carrabile all'impianto sportivo da Via Pirandello

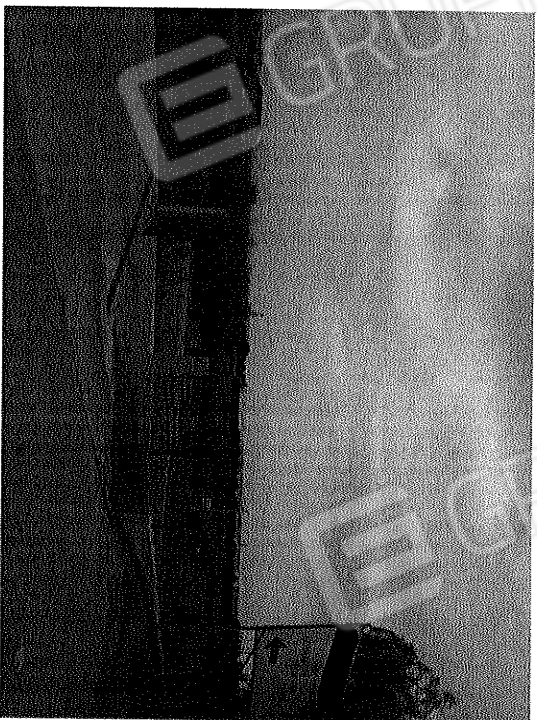


FOTO 3 -accesso carrabile all'impianto sportivo dalla s.p. 25 Priolo Florida

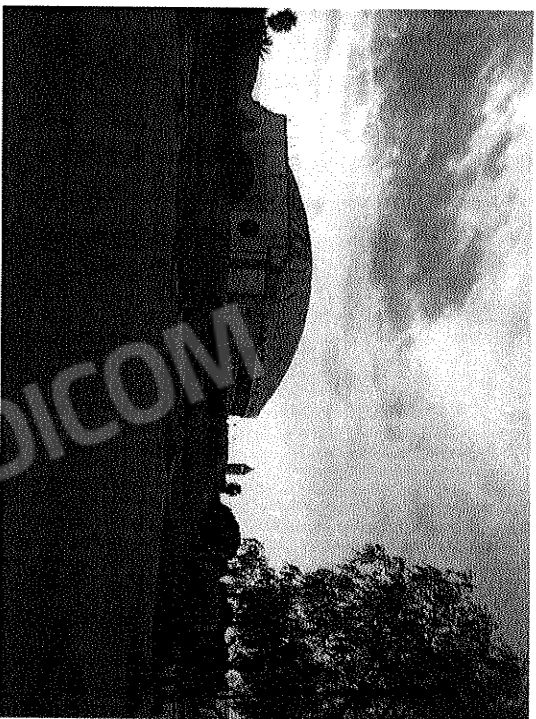


FOTO 4 -area libera

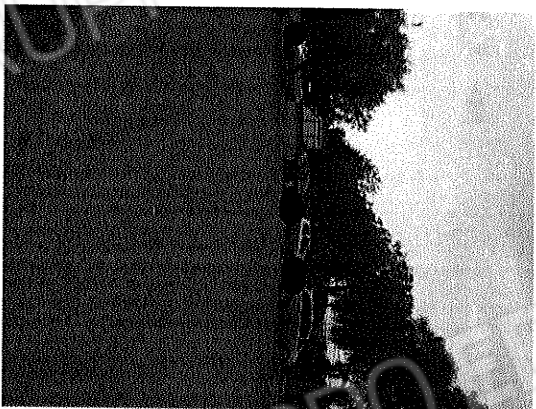


FOTO 5 -area destinata a parcheggio



FOTO 6 - prospetto principale del fabbricato destinato a piscina e palestra



FOTO 7 - prospetto retro per accesso pubblico e area parcheggio



FOTO 8 - prospetto retro con impianti e scale di accesso al piano interrato per locali impianti

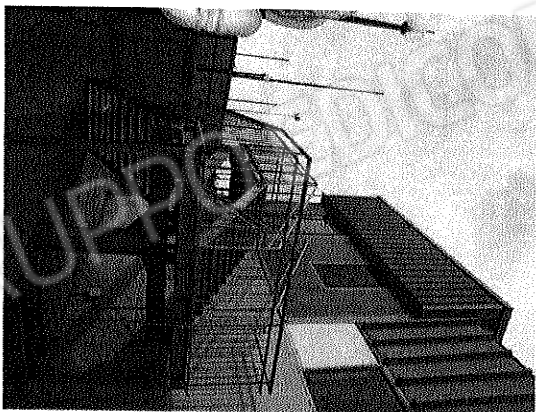


FOTO 9 e 10 - scala di emergenza e locale caldaia

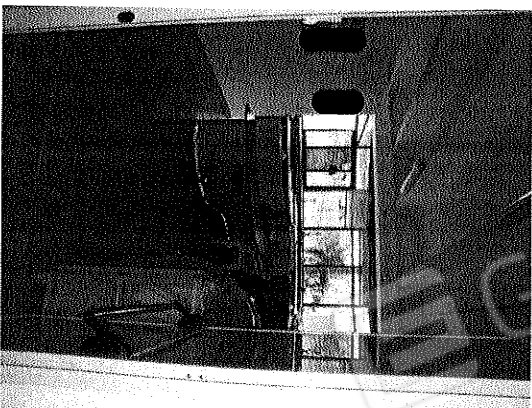
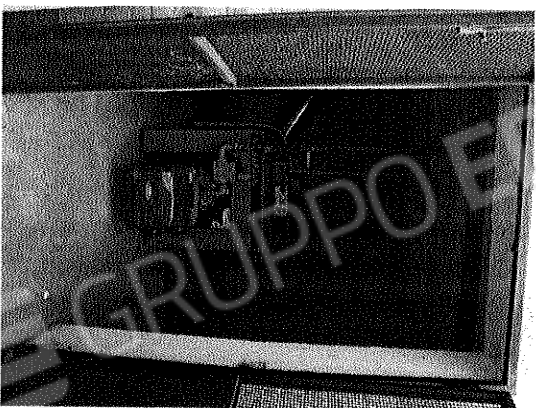


FOTO 11 e 12 - atrio d'ingresso e corridoio

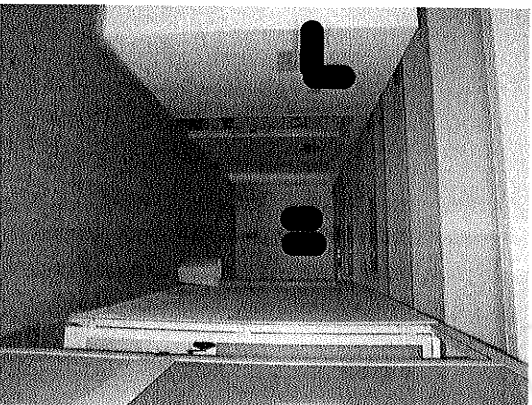


FOTO 13 e 14 - servizi igienici e docce

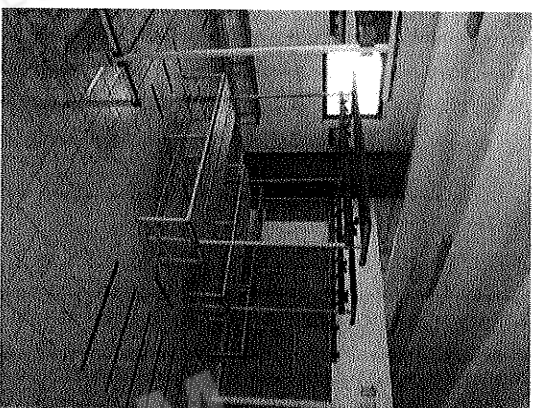


FOTO 15 e 16 - spogliatoi

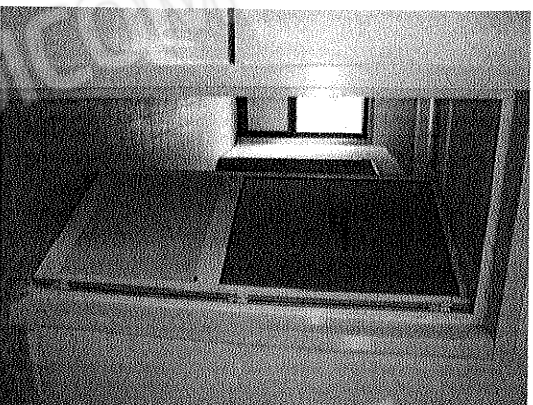




FOTO 18 – piscina per bambini e disabili



FOTO 17 – piscina principale coperta

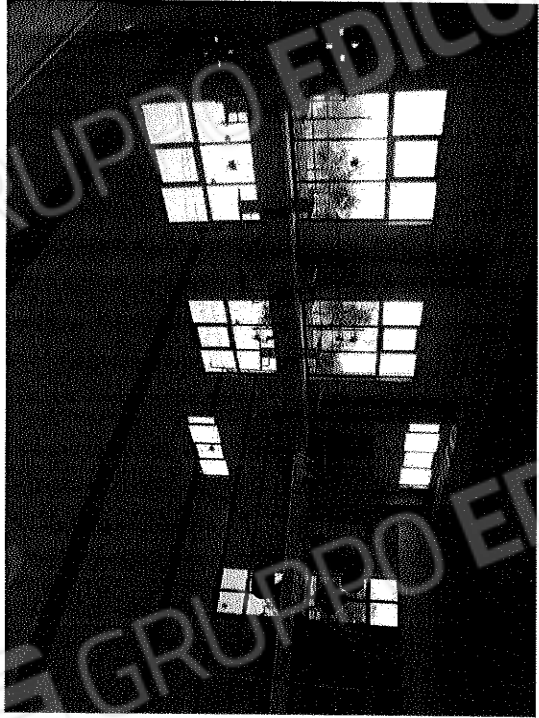


FOTO 20 – sala della palestra

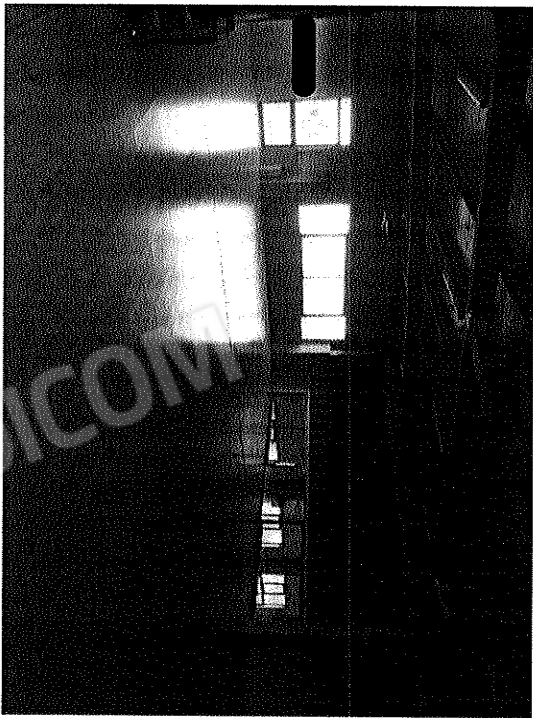


FOTO 19 – sala della palestra





FOTO 23 – sauna

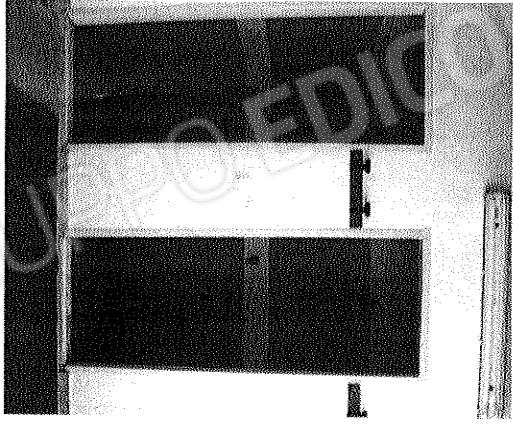


FOTO 21 e 22 – docce e servizio igienico



FOTO 25 – accesso al bar

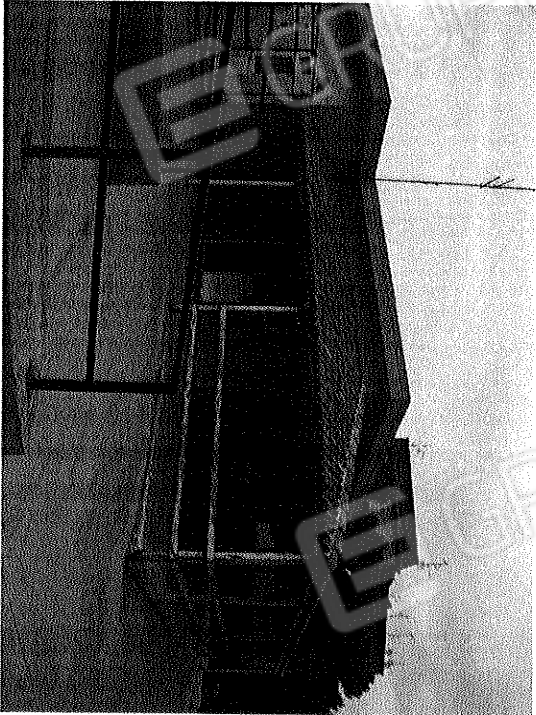


FOTO 24 – struttura adibita a bar e servizi



FOTO 27 – campo di calcio a 7

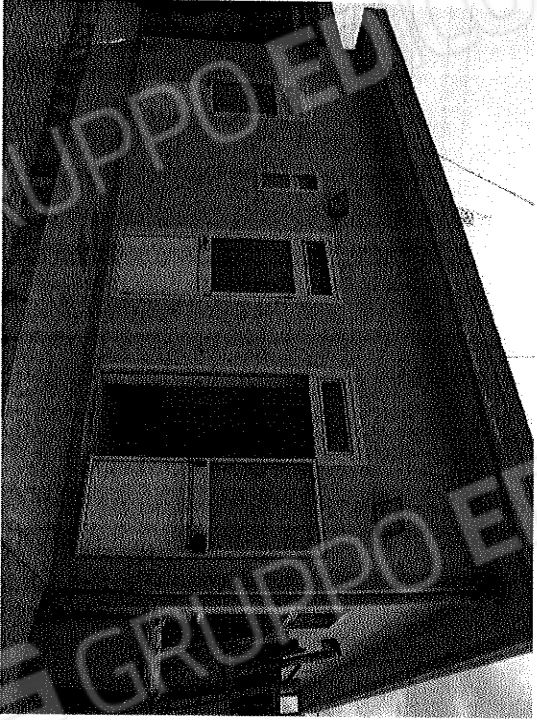


FOTO 26 – accesso ai servizi igienici e spogliatoi

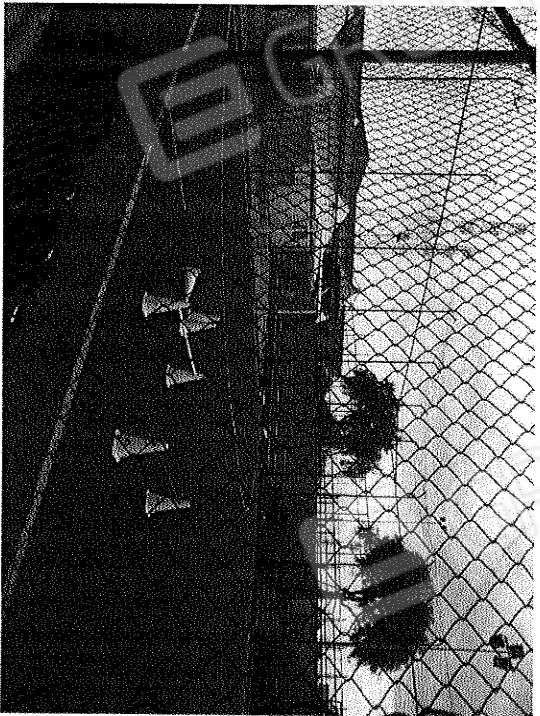


FOTO 28 – campo di calcio a 5