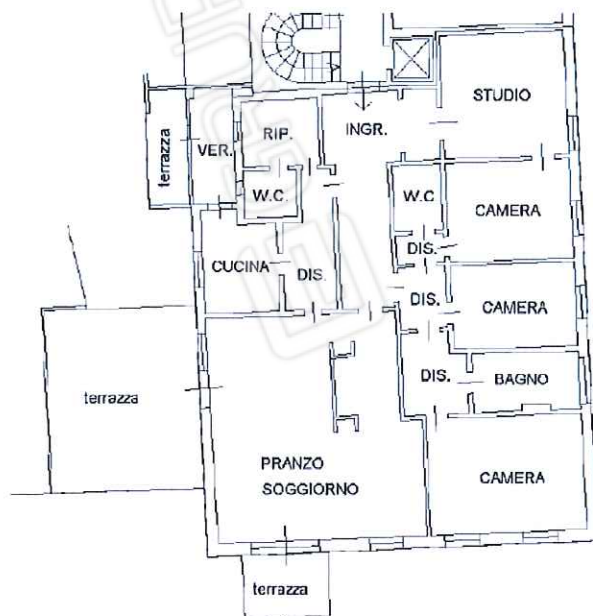




Inquadramento territoriale



estratto planimetria catastale



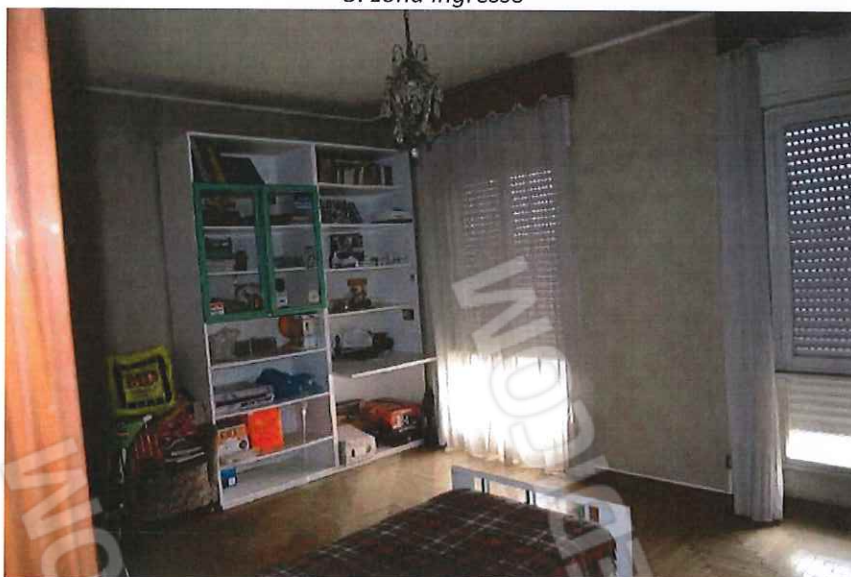
1. Ingresso area condominiale



2. vista scoperto condominiale

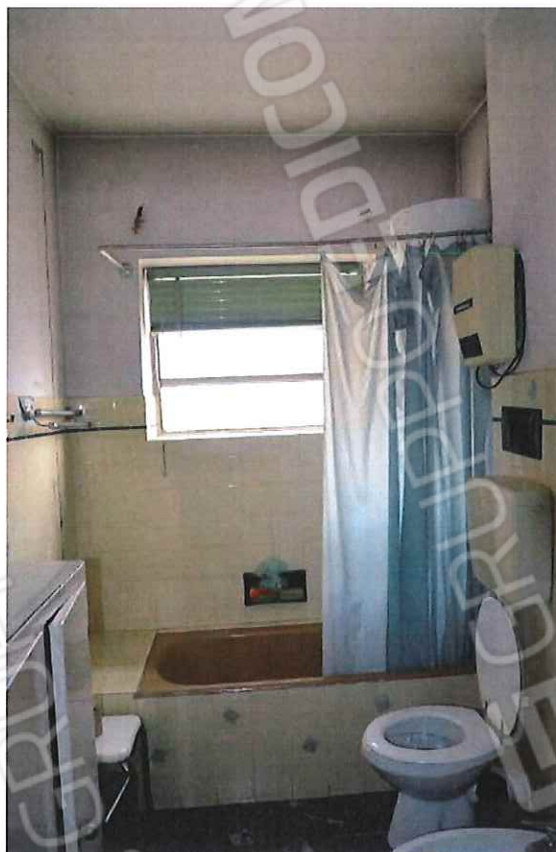


3. zona ingresso



4. camera grande a sud





5. bagno sud finestrato



6. camera piccola



7. camera piccola

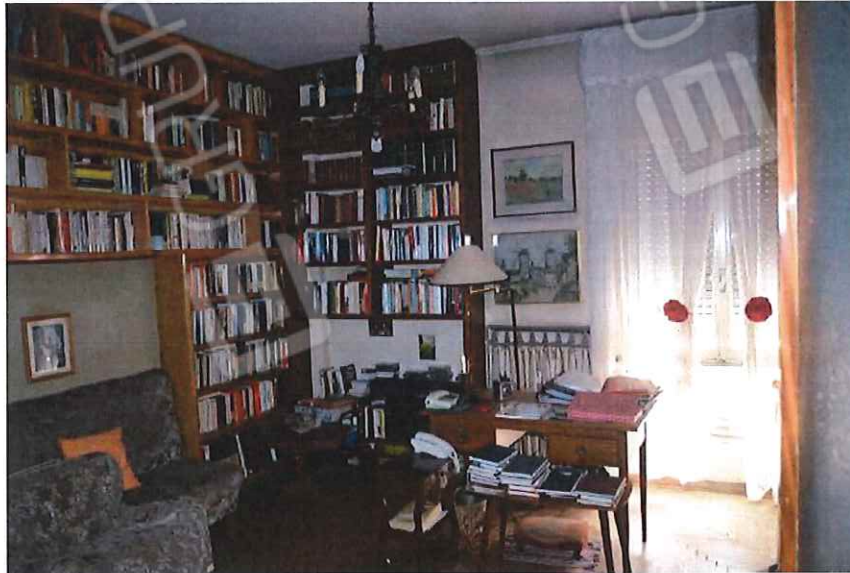


8. bagno cieco su disimp.





9. camera media nord



10. studio



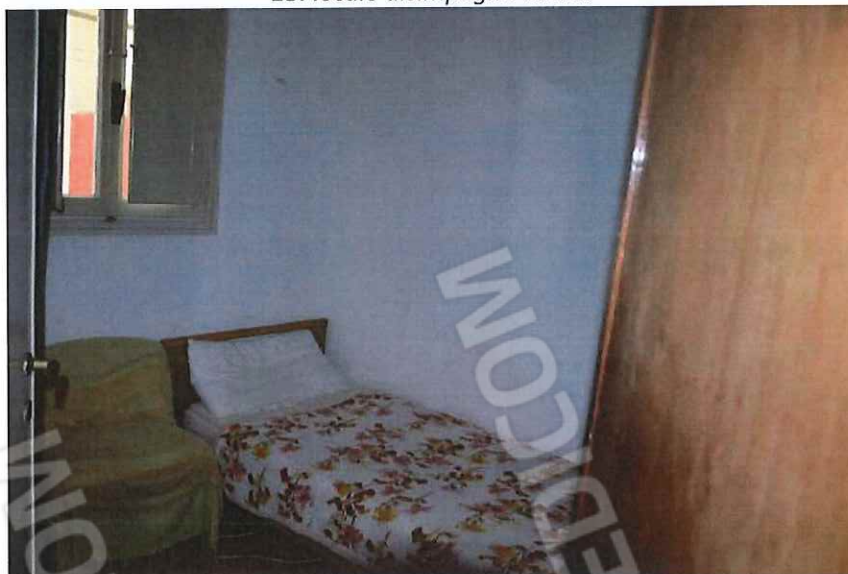
11. vista ingresso dallo studio



12. vista corridoio da ingresso

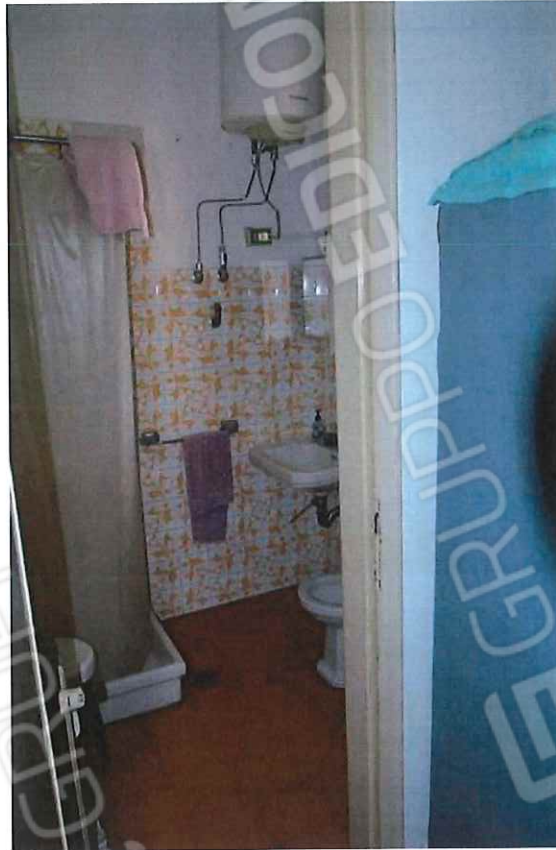


13. locale disimpegno cucina



14. locale ripostiglio zona cucina

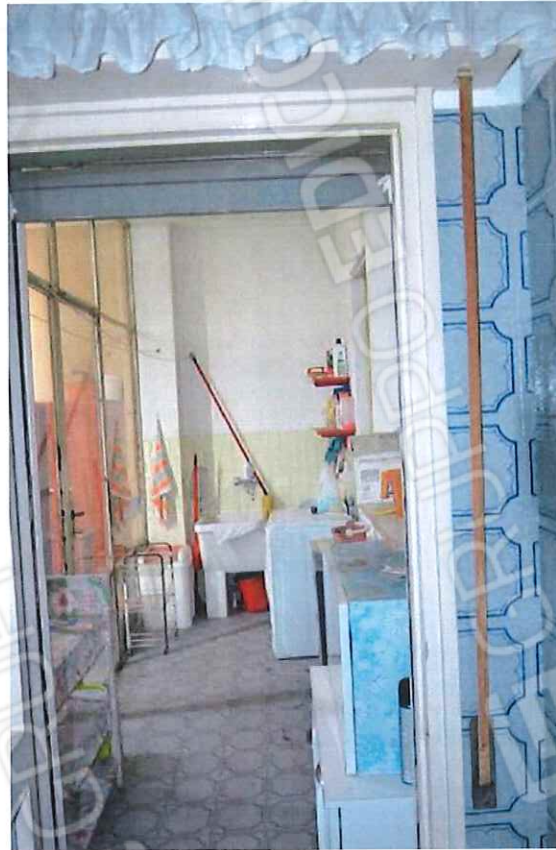




15. locale bagno zona cucina



16. locale bagno



17. locale veranda



18. serramento veranda

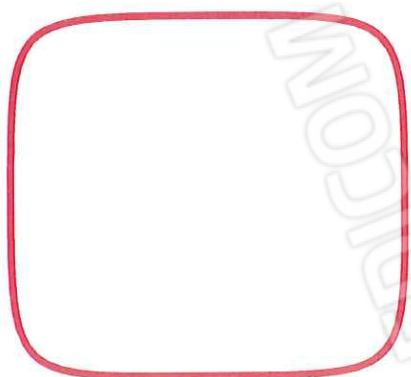




19. locale cucina



20. locale cucina





21. particolare pavimenti disimpegno cucina e soggiorno-pranzo



22. soggiorno pranzo





23. corridoio accesso cantine



24. porta di accesso cantina



25. vista interna cantina