

TRIBUNALE DI TREVISO
SEZIONE ESECUZIONI IMMOBILIARI
E.I. 385/2015

DOCUMENTAZIONE FOTOGRAFICA

UNITA' IN CRESpano DEL GRAPPA

Giavera del M.Ilo, 05/10/2018

II C.T.U.

dr.ssa geom. Francesca Varaschin





FOTO 1



FOTO 2



FOTO 3





FOTO 4



FOTO 5

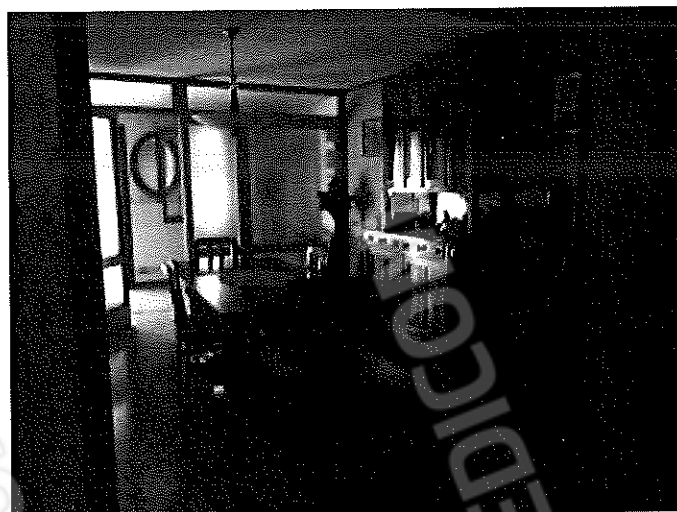


FOTO 6





FOTO 7



FOTO 8

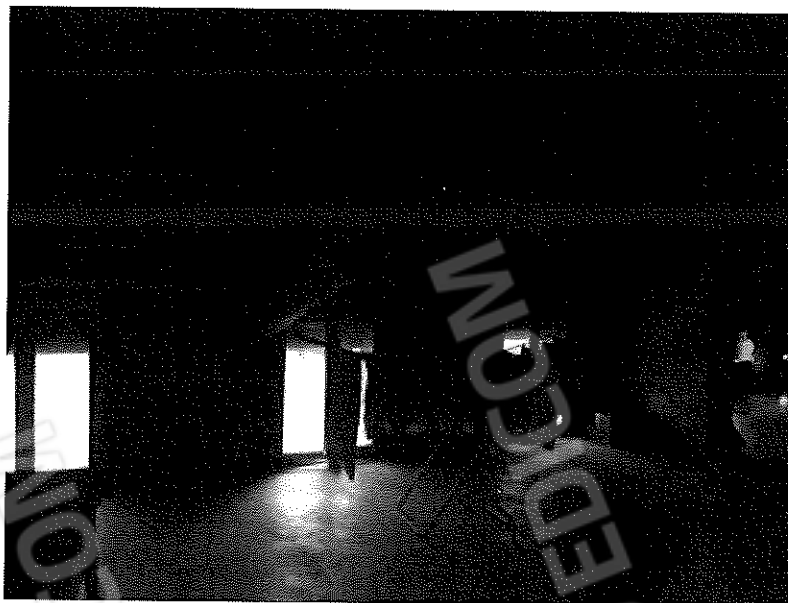


FOTO 9



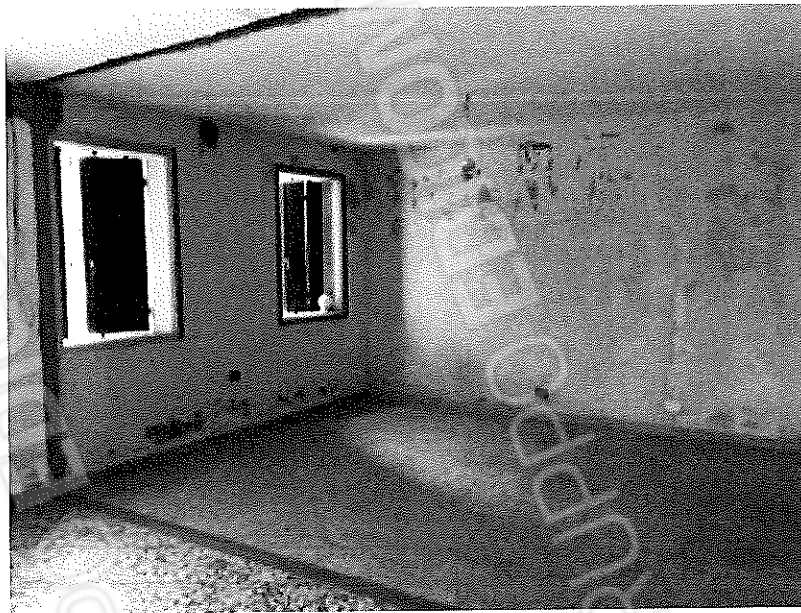


FOTO 10



FOTO 11





FOTO 12



FOTO 13





FOTO 14



FOTO 15



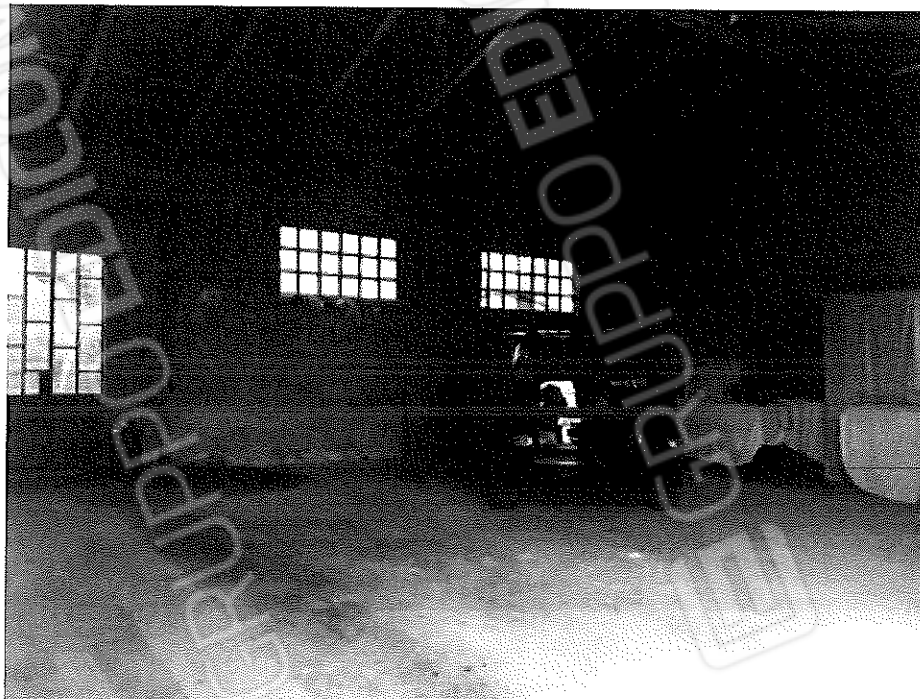


FOTO 16

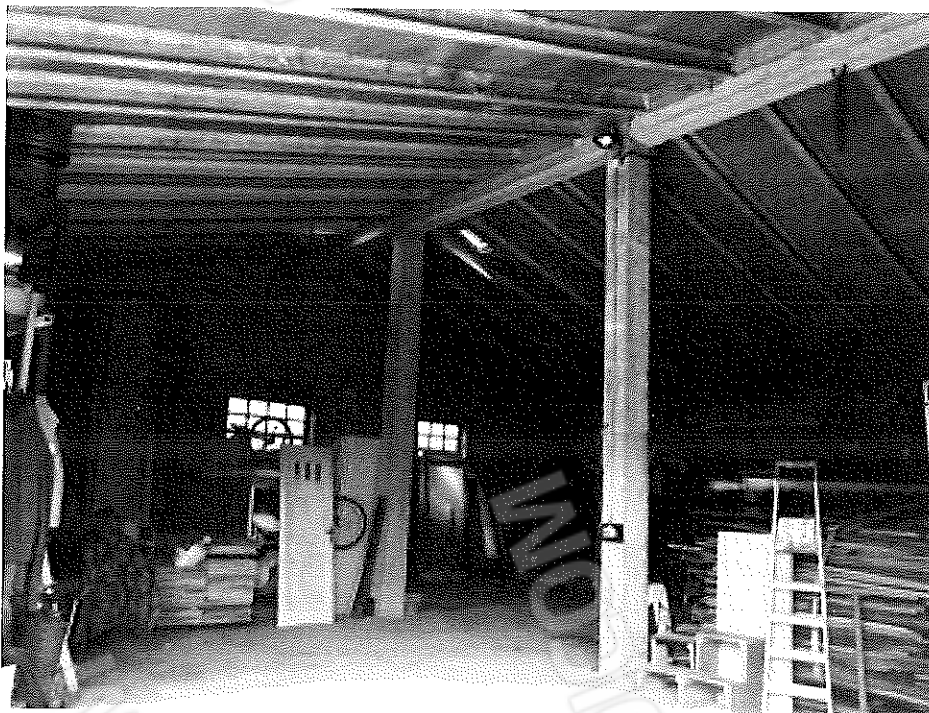


FOTO 17





FOTO 18



FOTO 19





FOTO 20

