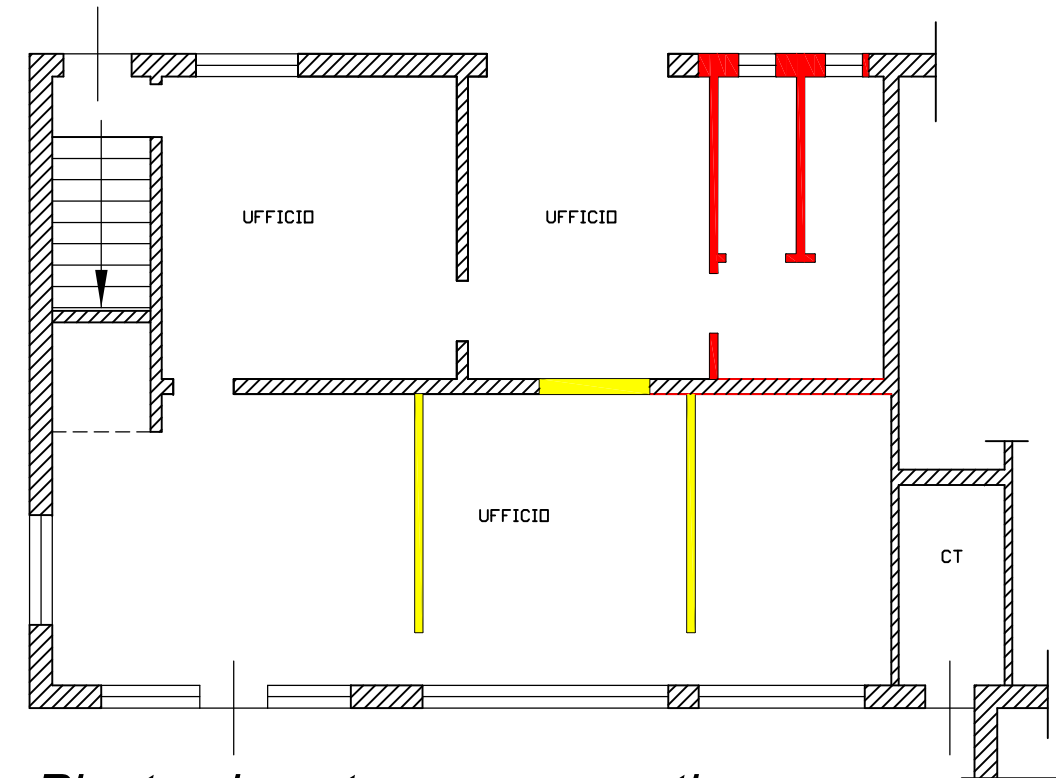
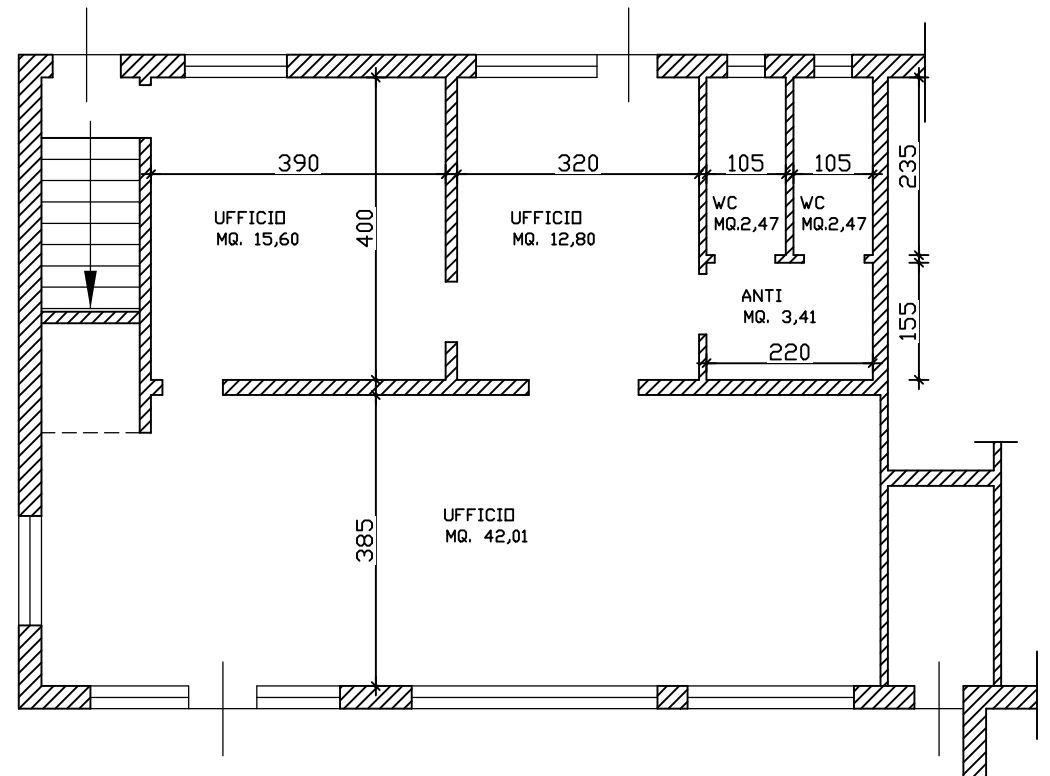


Pianta piano terra autorizzato
H. 2,40 ml

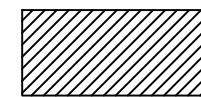


Pianta piano terra comparativa

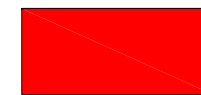


Pianta piano terra stato di fatto
H. 2,35 ml

LEGENDA



Opere autorizzate



Opere costruite senza titolo



Opere demolite senza titolo

Firmato Da: ADAMI SONIA Emesso Da: ARUBAPECO S.p.A. NG CA Serial#: 21b1430707e3261f5eaf847f3b8332c

