

LOTTO 1 Foto 1: vista d'insieme dei beni da Via Margherita

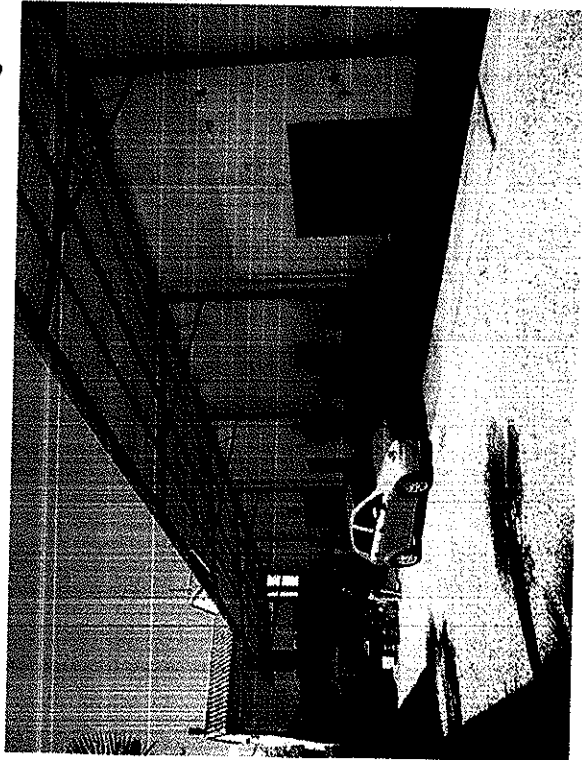


Foto 3: scorcio sul fabbricato intermedio verso nord-ovest

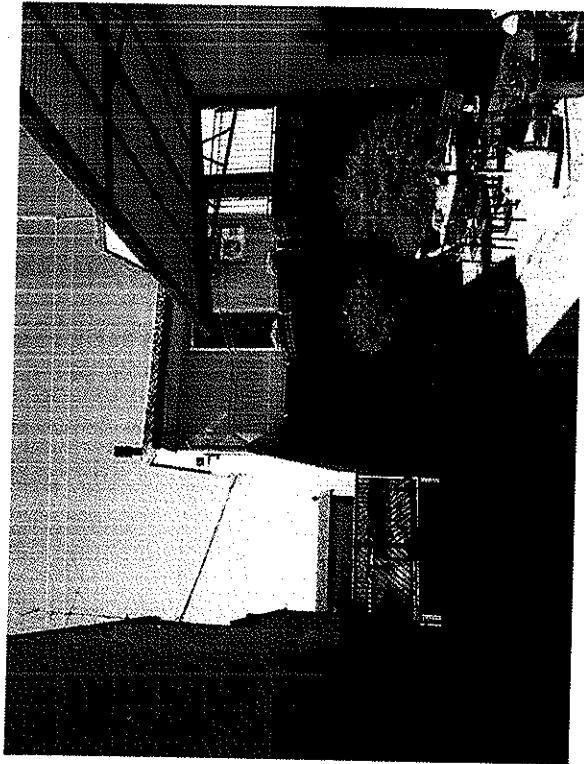


Foto 2: vista del cortile interno verso l'abitazione

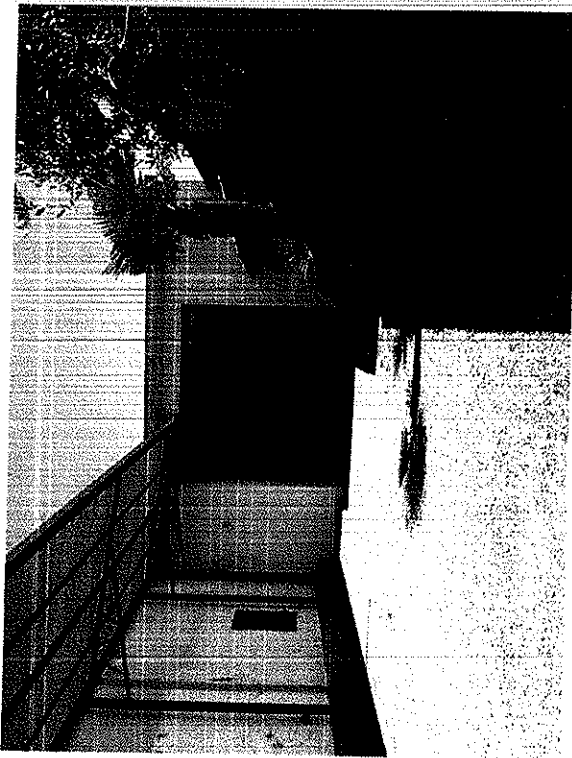


Foto 4: Vista dell'accesso al magazzino dalla corte interna

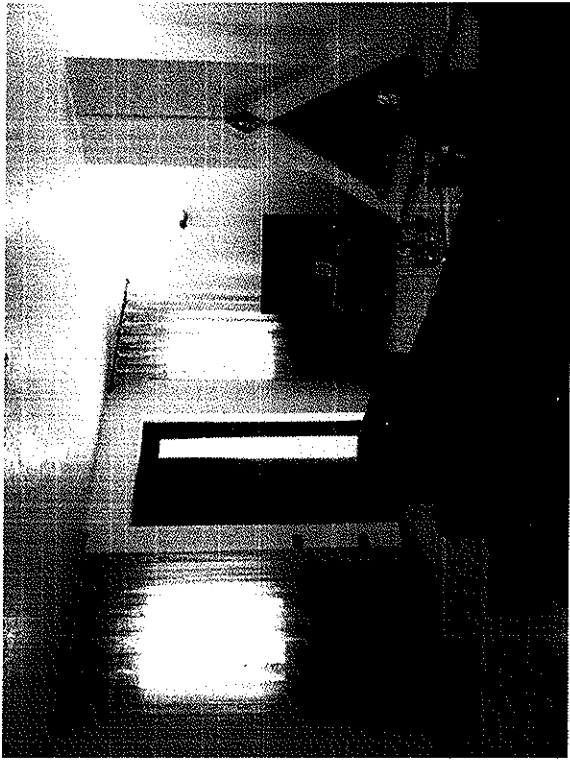


Foto 5: scorcio sul soggiorno dell'abitazione

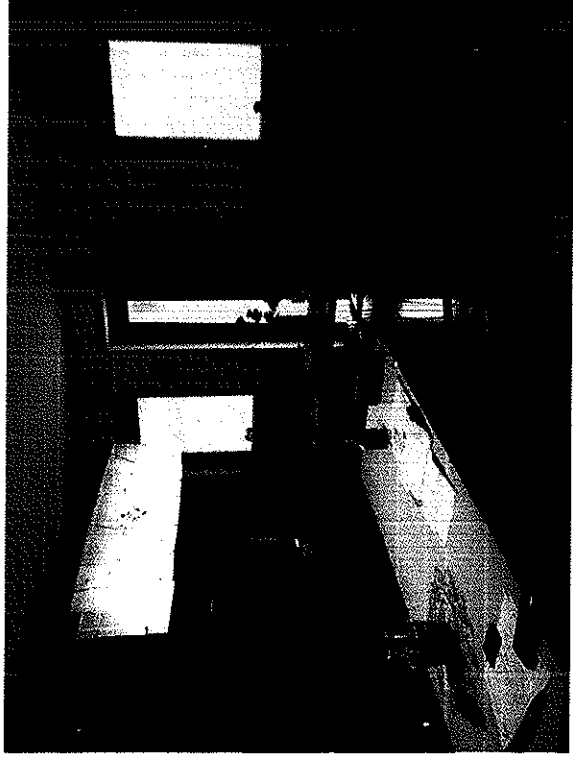


Foto 6: vista della cucina



Foto 7: interno del bagno al piano terra

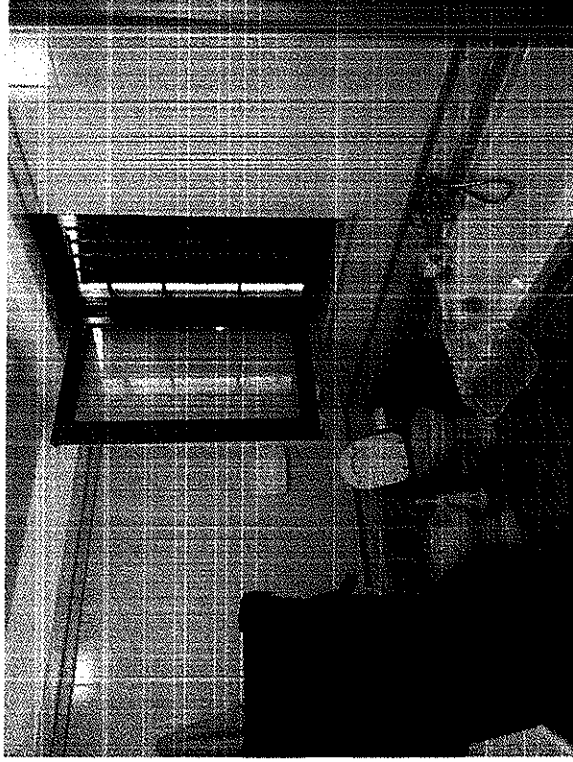


Foto 8: interno del bagno al piano primo

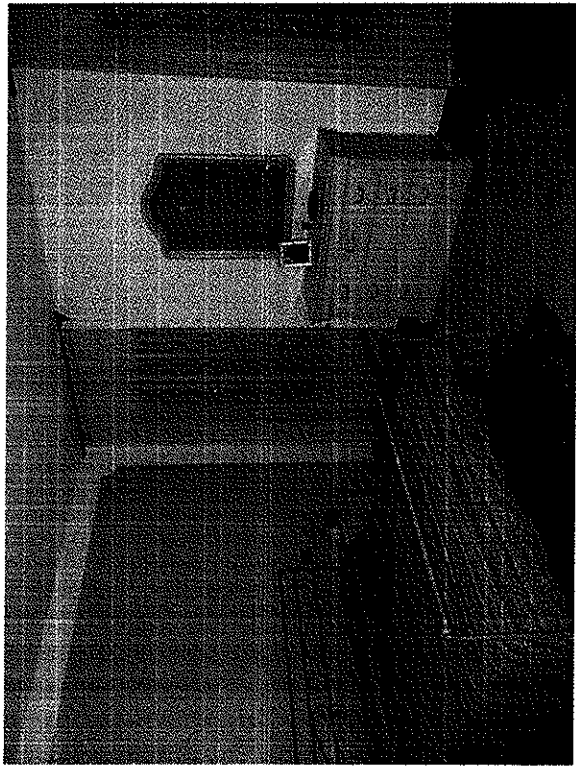


Foto 9: camera matrimoniale al primo piano

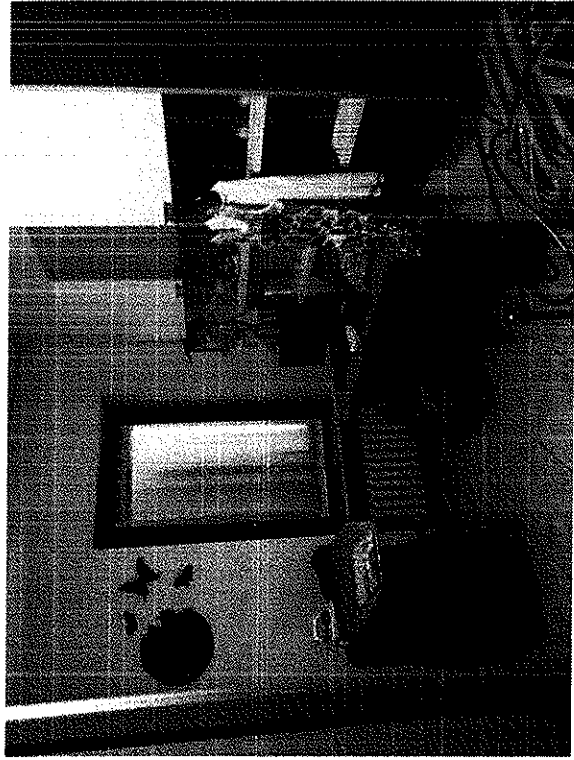


Foto 10: interno di una camera da letto

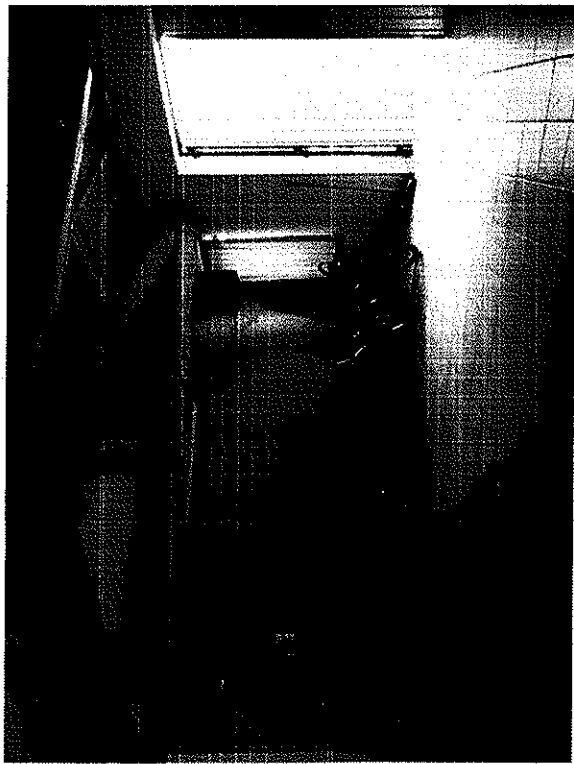


Foto 11: locale a cantina al piano terra



Foto 12: taverna al piano interrato



Foto 13: parte del magazzino adibito a locale polifunzionale

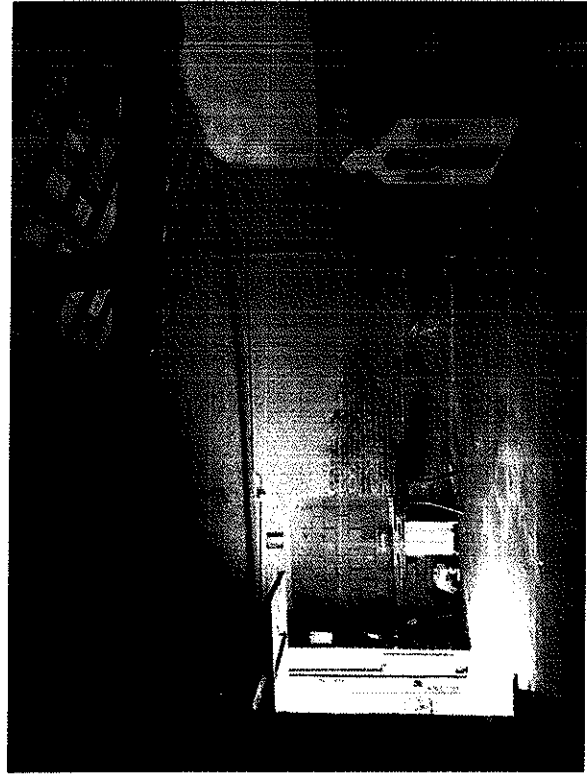


Foto 14: parte del magazzino adibito ad autorimessa

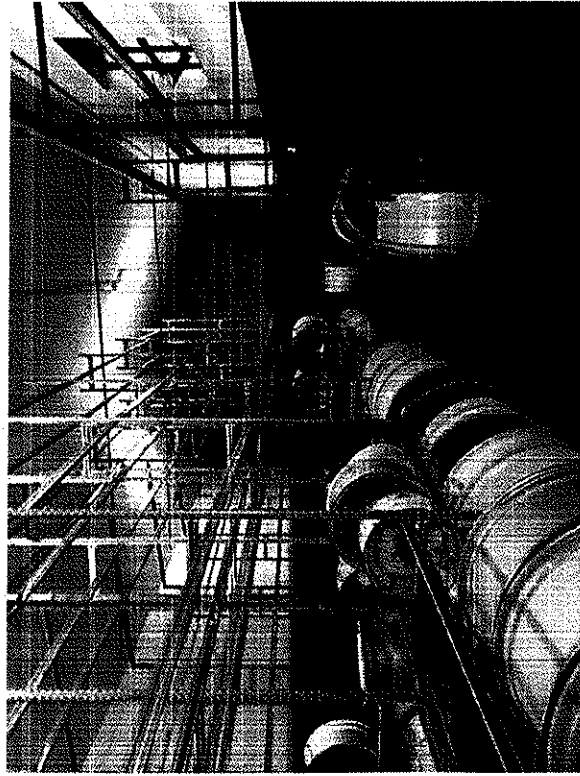


Foto 15: interno del magazzino (ambiente secondario)

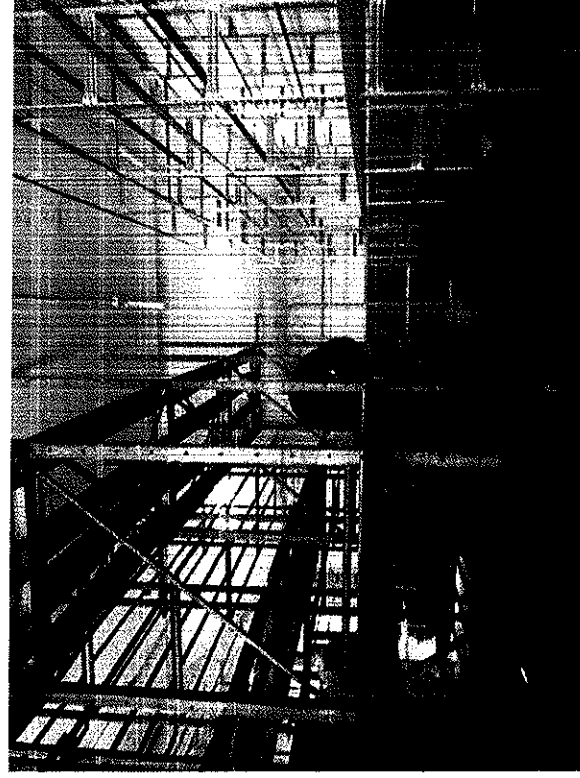


Foto 16: interno del magazzino (ambiente principale)