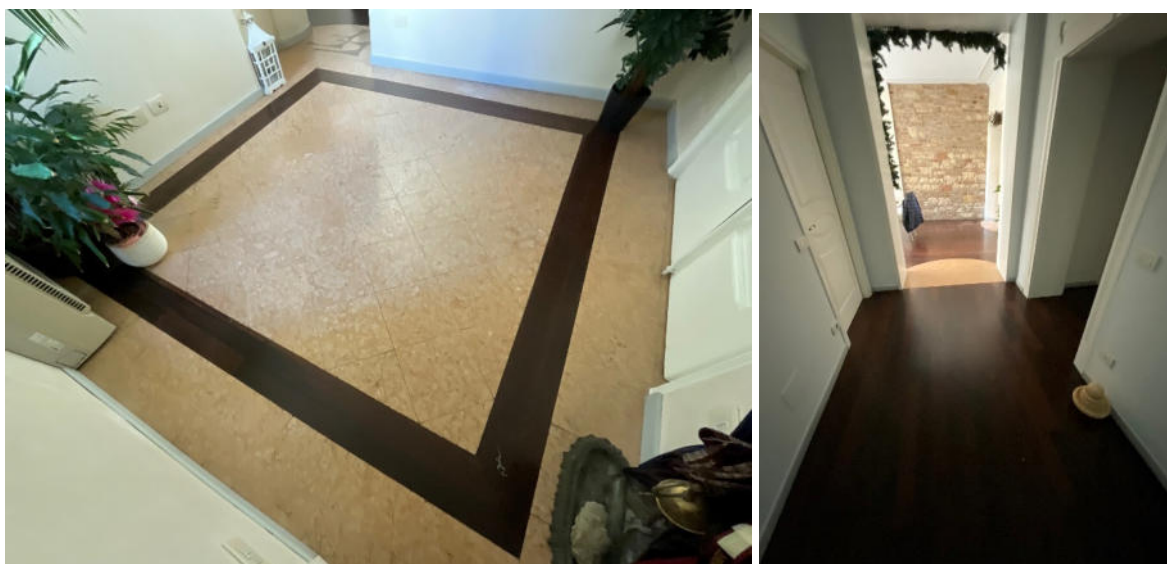


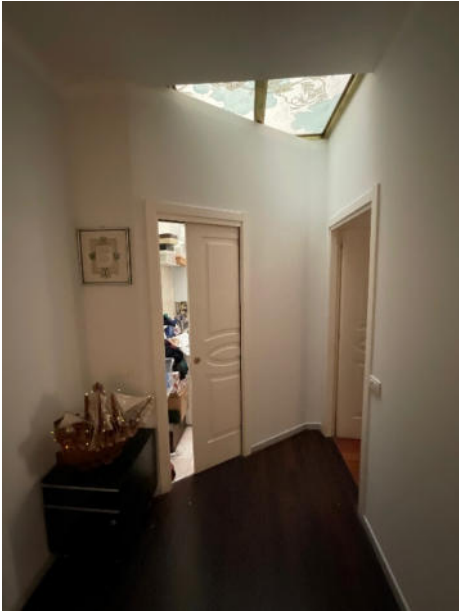
ALLEGATO E.10.Fotografie degli interni - Abitazione

Portoncino d'ingresso

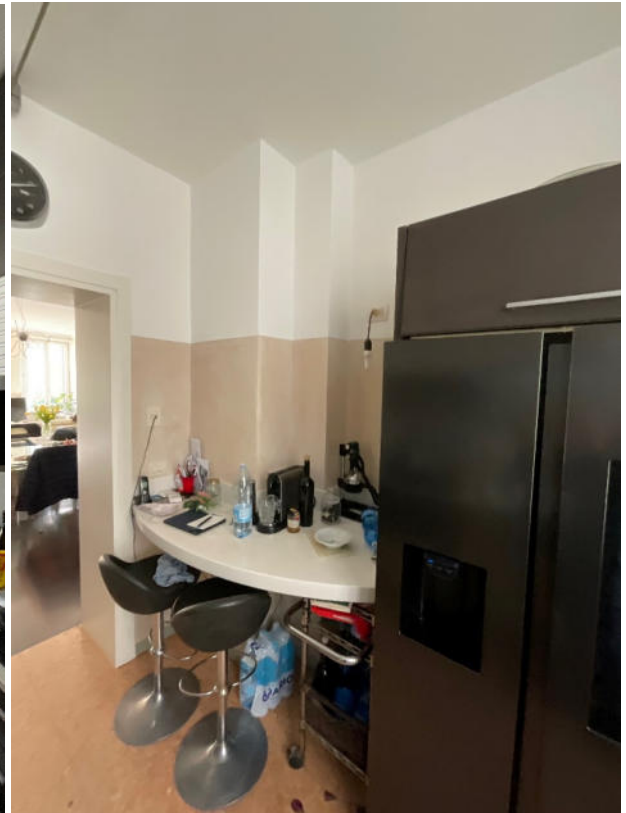


Corridoi e disimpegni nell'abitazione

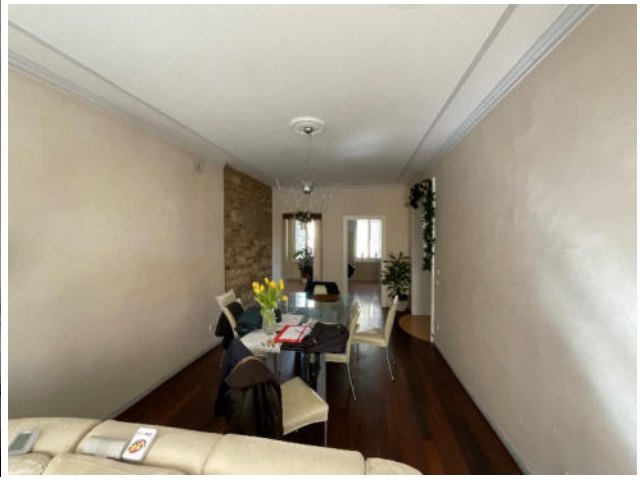




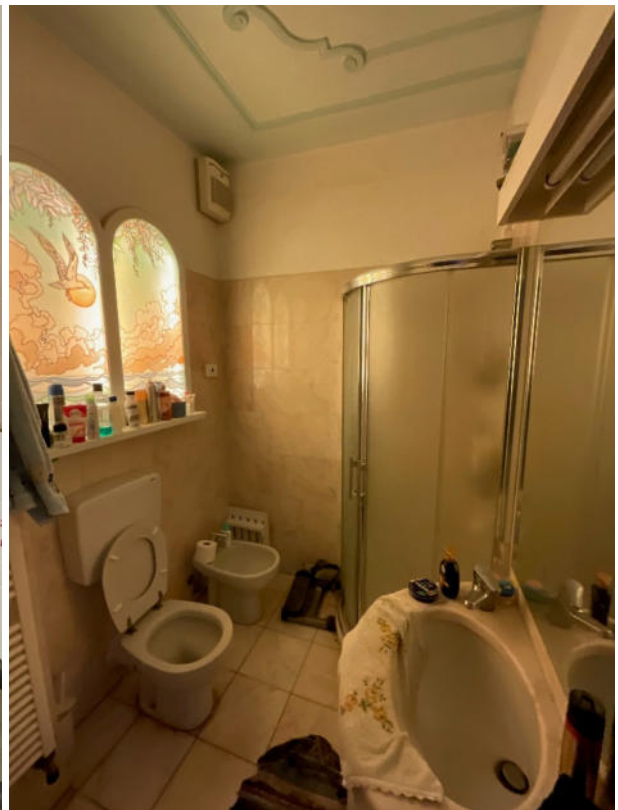
Cucina



Soggiorno



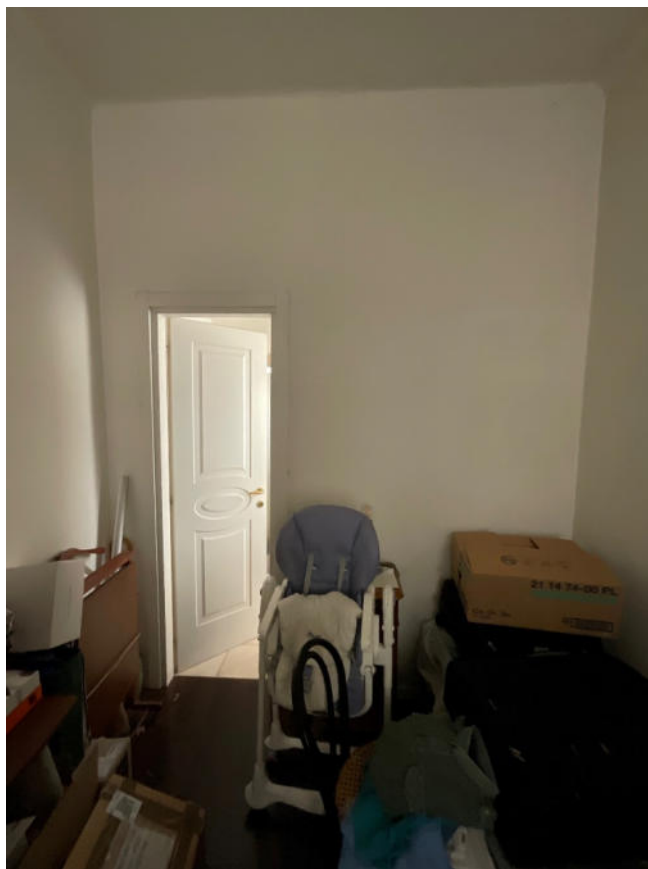
Servizi igienico-sanitari



Camere da letto



Studio



Lavanderia



Dettagli impianti e servizi presenti



Pavimentazioni e rivestimenti pareti

