

INTERNO

Foto 1 - Stanza Ingresso



Foto 2 - Portoncino



Foto 3 - Cucina



Foto 4 - balconcino



Foto 5 - balcone Sogg



Foto 6 - soggiorno



Foto 7 - soggiorno

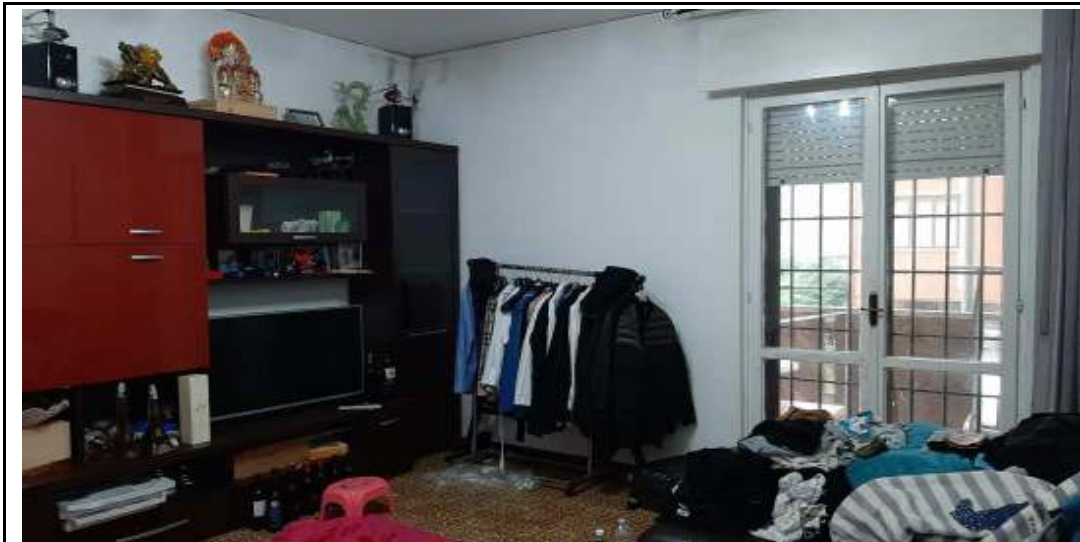


Foto 8 - soggiorno



Foto 9 - letto 2

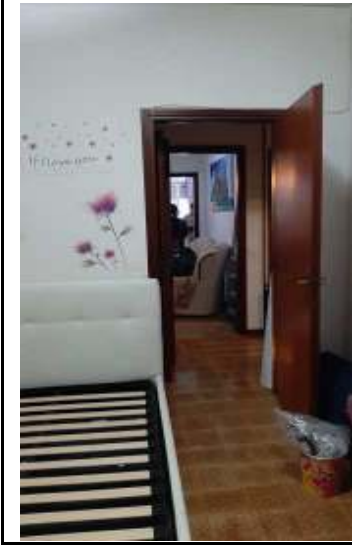


Foto 10 - balcone



Foto 11 - letto 3



Foto 12 - letto 3



Foto 13 - balcone letto 3-2

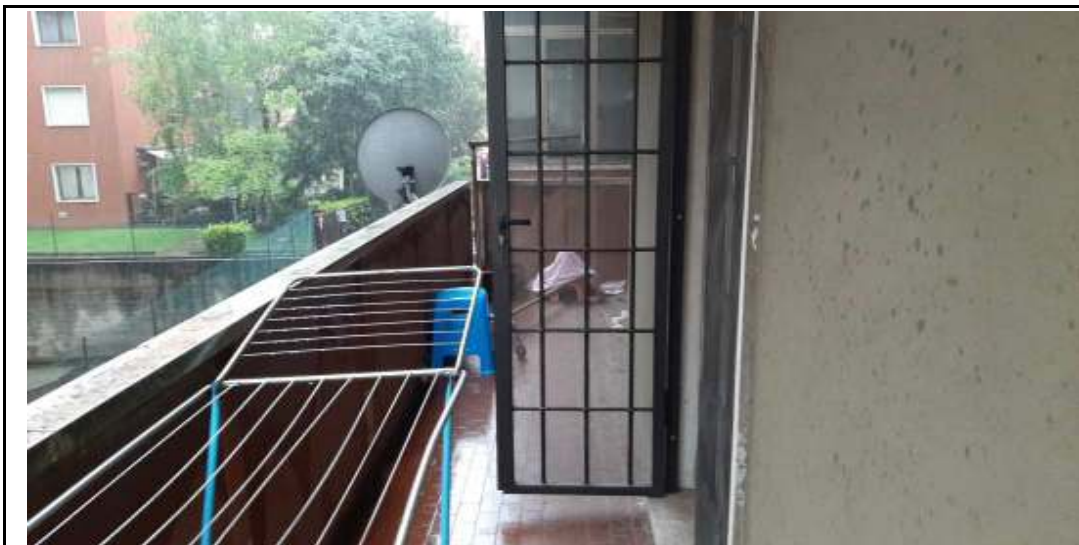


Foto 14 - letto 1

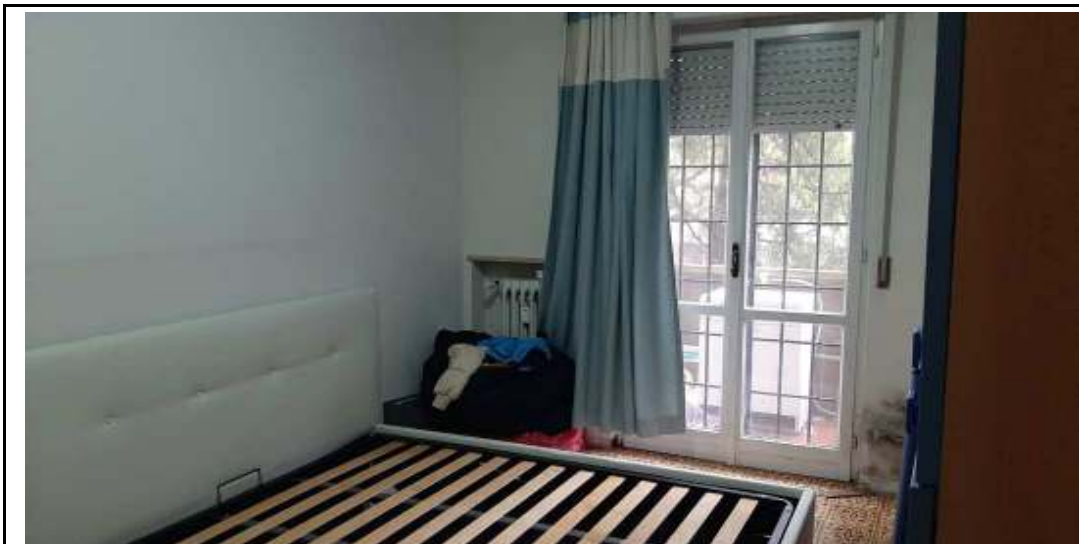


Foto 15 - letto 1



Foto 16 - balcone letto 1



Foto 17 - ripostiglio



Foto 18 - bagno



Foto 19 - bagno



PIANO INTERRATO

Foto 20 - cantina



Foto 21 - interno



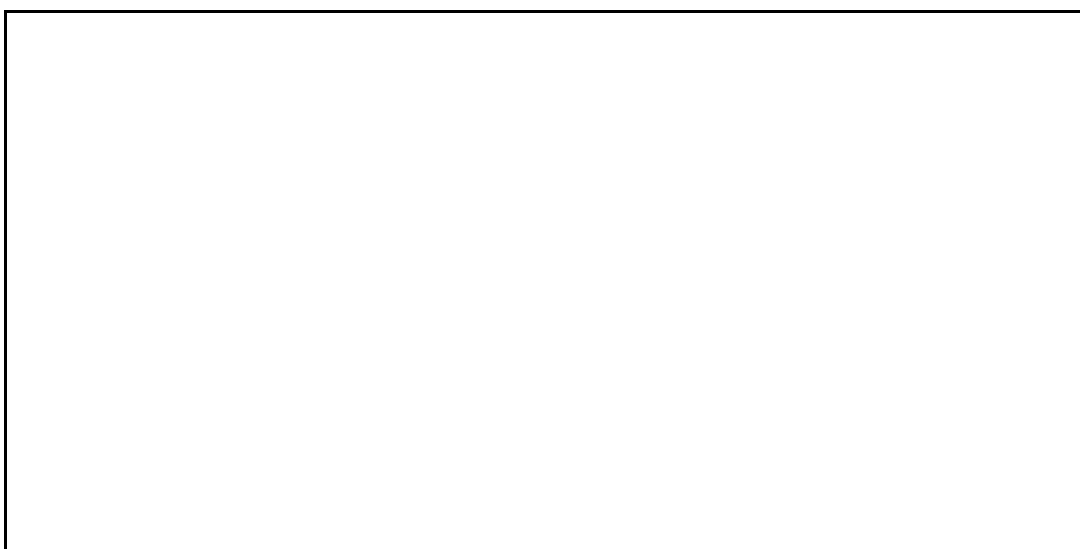
Foto 22 - ingresso ai garages



Foto 23 - garage



Foto 24 - interno



ESTERNO

Foto 1 - Vista da via 28 Gennaio



Foto 2 - Vista da via Toniolo



Foto 3 - Ingresso Principale

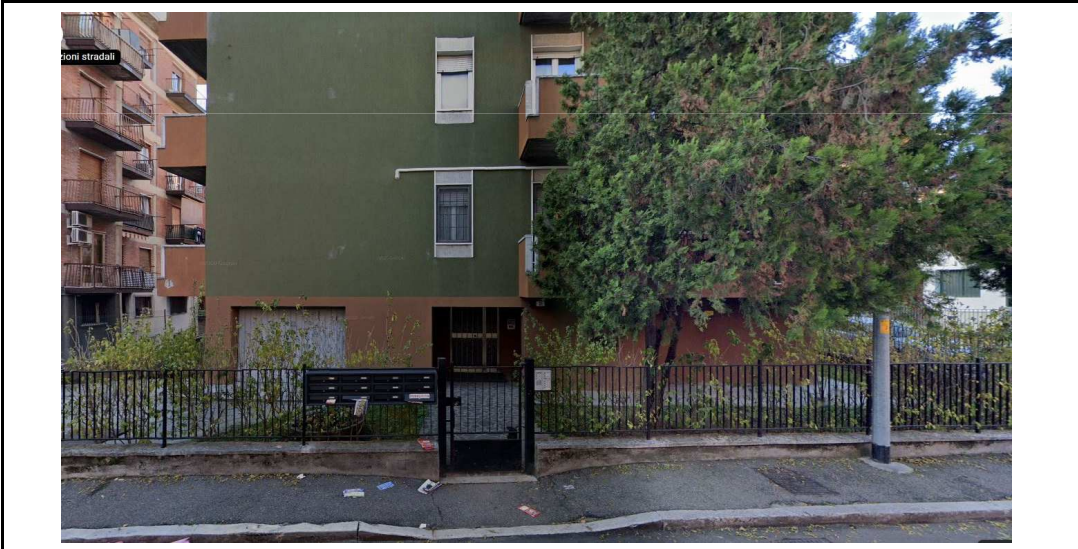


Foto 4 - Ingresso alla Rampa

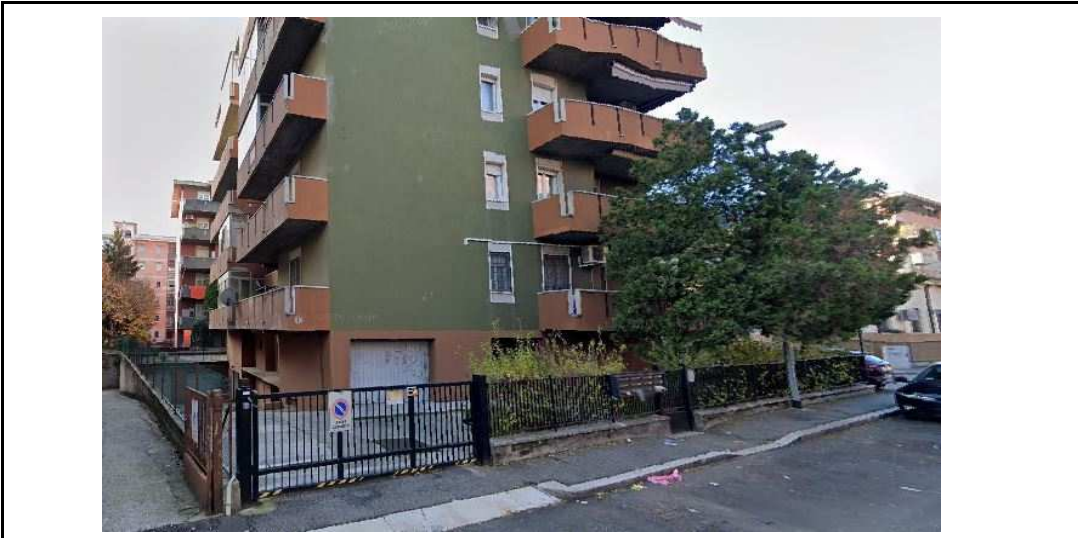


Foto 5 - Area interna



Foto 6 - Rampa



Foto 7 - Atrio



PARTI COMUNI

Foto 8 - Atrio con vano scala

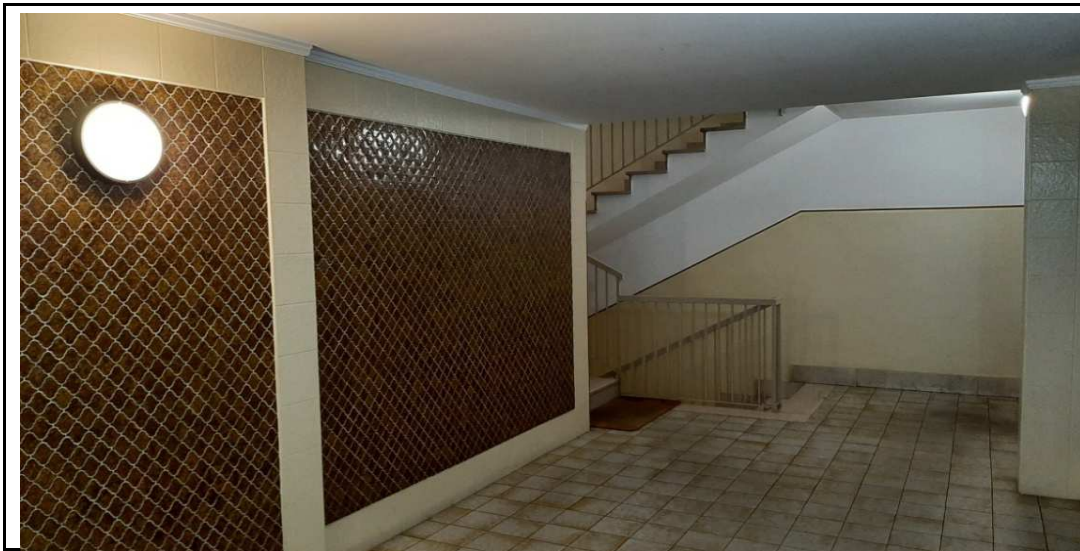


Foto 9 - Vano scala

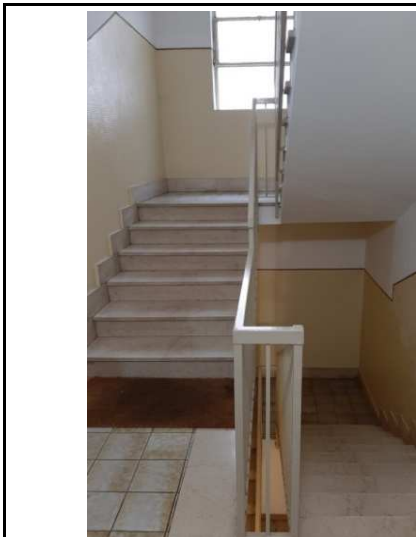


Foto 10 - Portoncino Blindato

