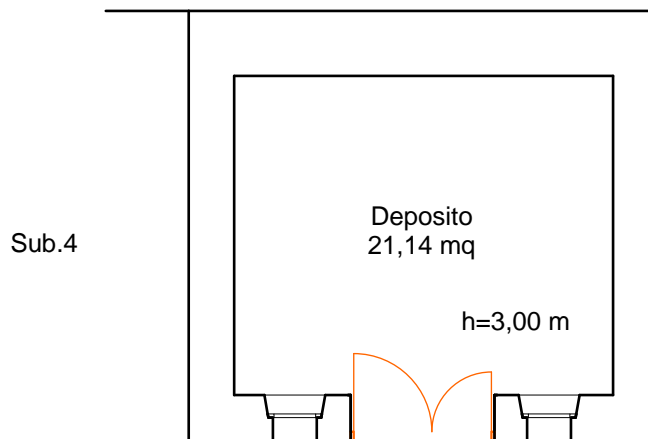
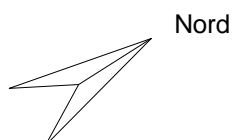


PIANO TERRA



Superficie netta magazzino (Snm)
Snm= 21,14 mq
Superficie lorda commerciale magazzino (Slcm)
Slcm= 30,34 mq

Scala 1:100



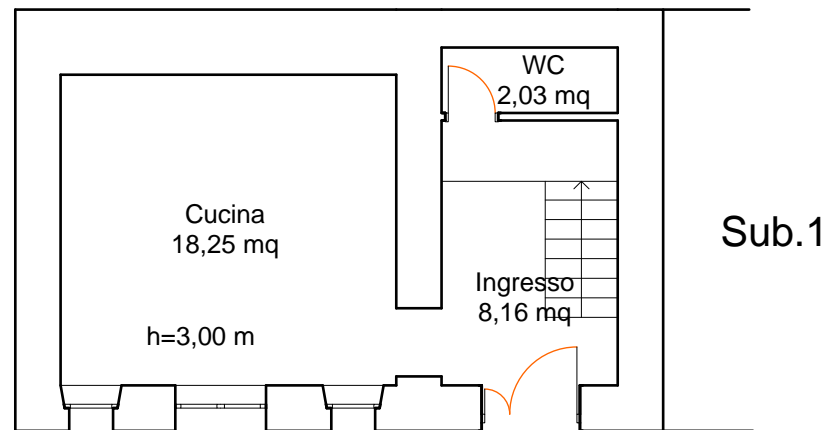
Il C.T.U.
Ing. Gianfranco CHIAPPETTA

PLANIMETRIA DA RILIEVO

COMUNE DI MENDICINO (CS)-S.P. 81, n°82-84
N.C.E.U. Fg.20-P.IIa 404-Sub.2

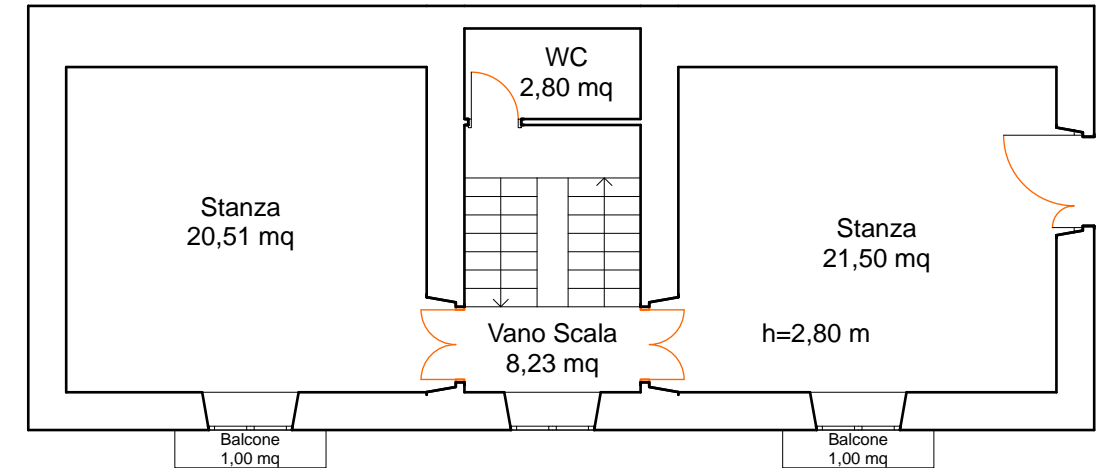
All.7.2

PIANO TERRA



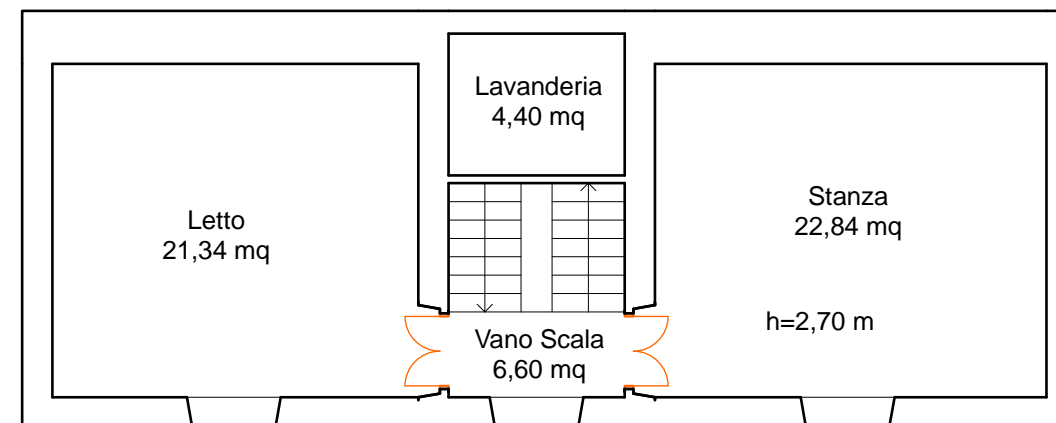
Superficie netta piano terra (Snpt)
Snpt= 28,44 mq
Superficie lorda commerciale piano terra (Slcpt)
Slcpt= 42,88 mq

PIANO PRIMO

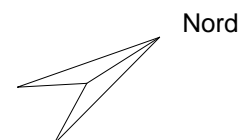


Superficie netta piano primo (Snpp)
Snpp= 53,04 mq
Superficie lorda commerciale piano primo (Slcpp)
Slcpp= 75,78 mq
Superficie balconi (Sb)
Sb= 2,00 mq

PIANO SECONDO



Superficie netta piano secondo (Snps)
Snps= 55,18 mq
Superficie lorda commerciale piano secondo (Slpcs)
Slpcs= 75,78 mq
Superficie netta totale (Snt)
Snt= 28,44+53,05+55,18= 136,66 mq
Superficie lorda commerciale totale (Slct)
Slct= 42,88+75,78+75,78= 194,44 mq



Scala 1:100

Il C.T.U.
Ing. Gianfranco CHIAPPETTA