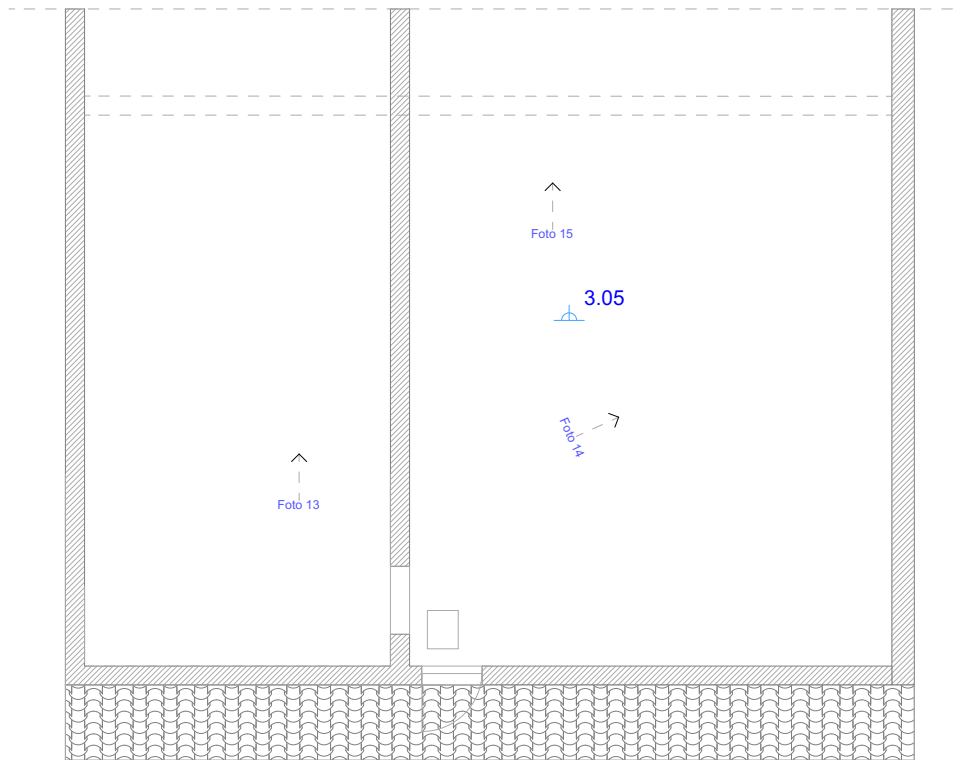


F. 46 - Part.IIa 575 sub 4 P.T.



F. 46 - Part.IIa 575 sub 4 P.Sott.



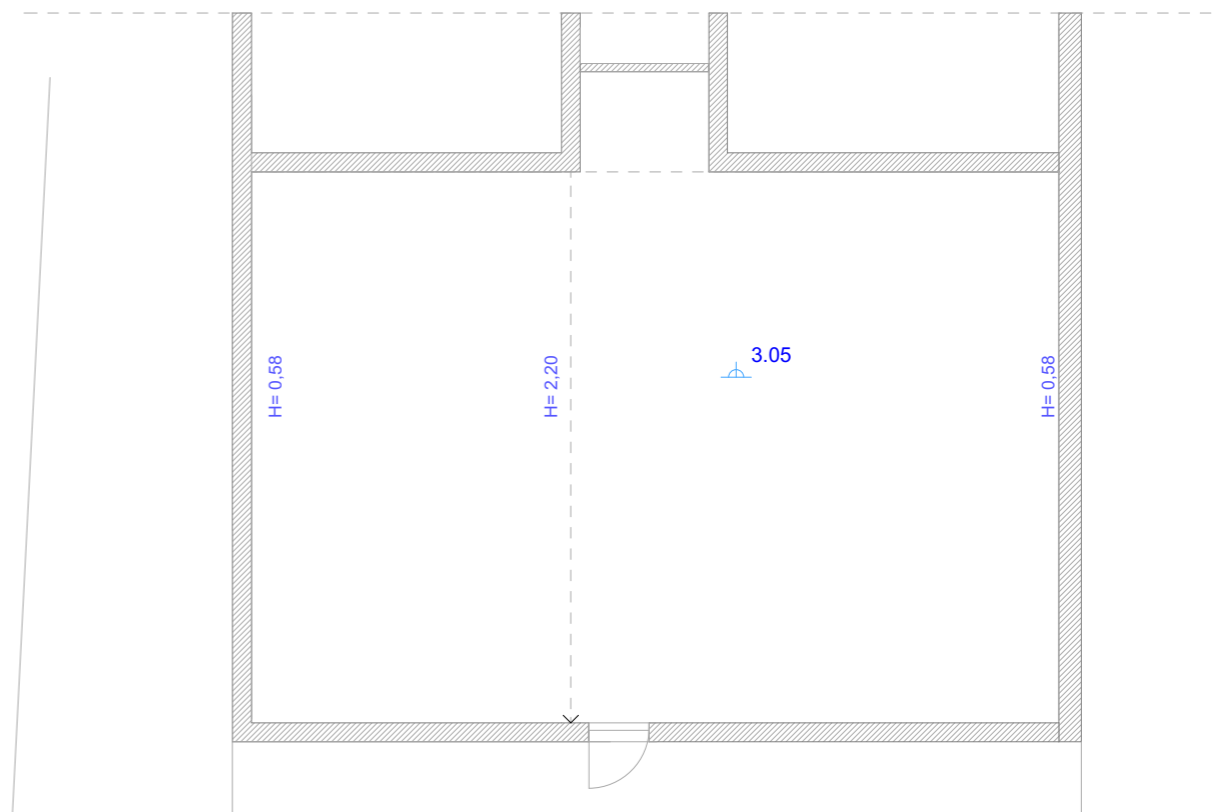
CATASTALE

F. 46 - Part.IIa 575 sub 4 P.T.



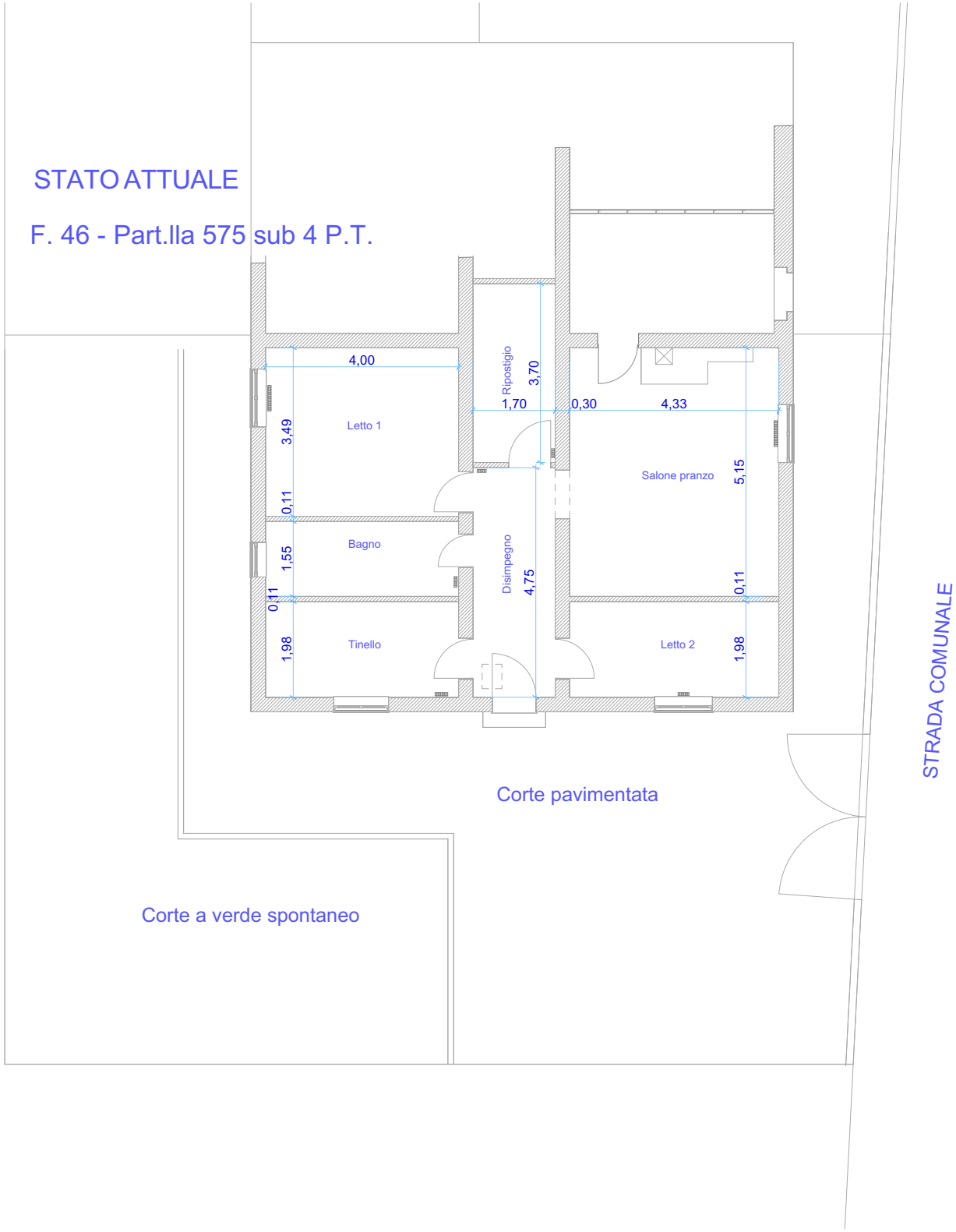
STATO ATTUALE

F. 46 - Part.IIa 575 sub 4 Soffitta



STATO ATTUALE

F. 46 - Part.IIa 575 sub 4 P.T.



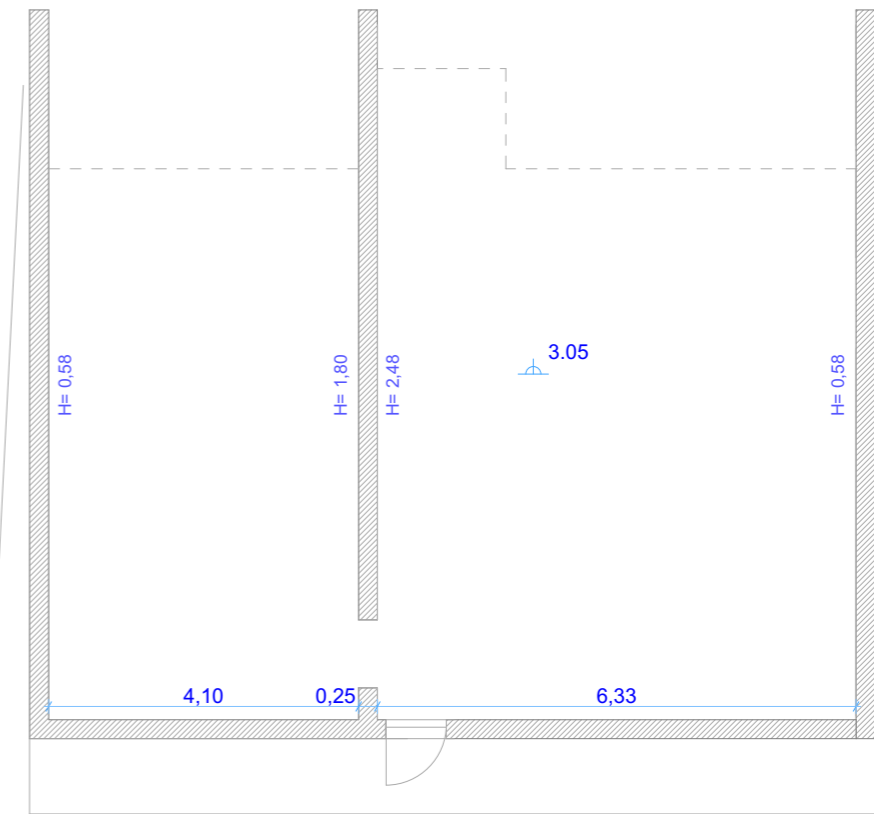
STATO ATTUALE

F. 46 - Part.IIa 575 sub 4 P.T.

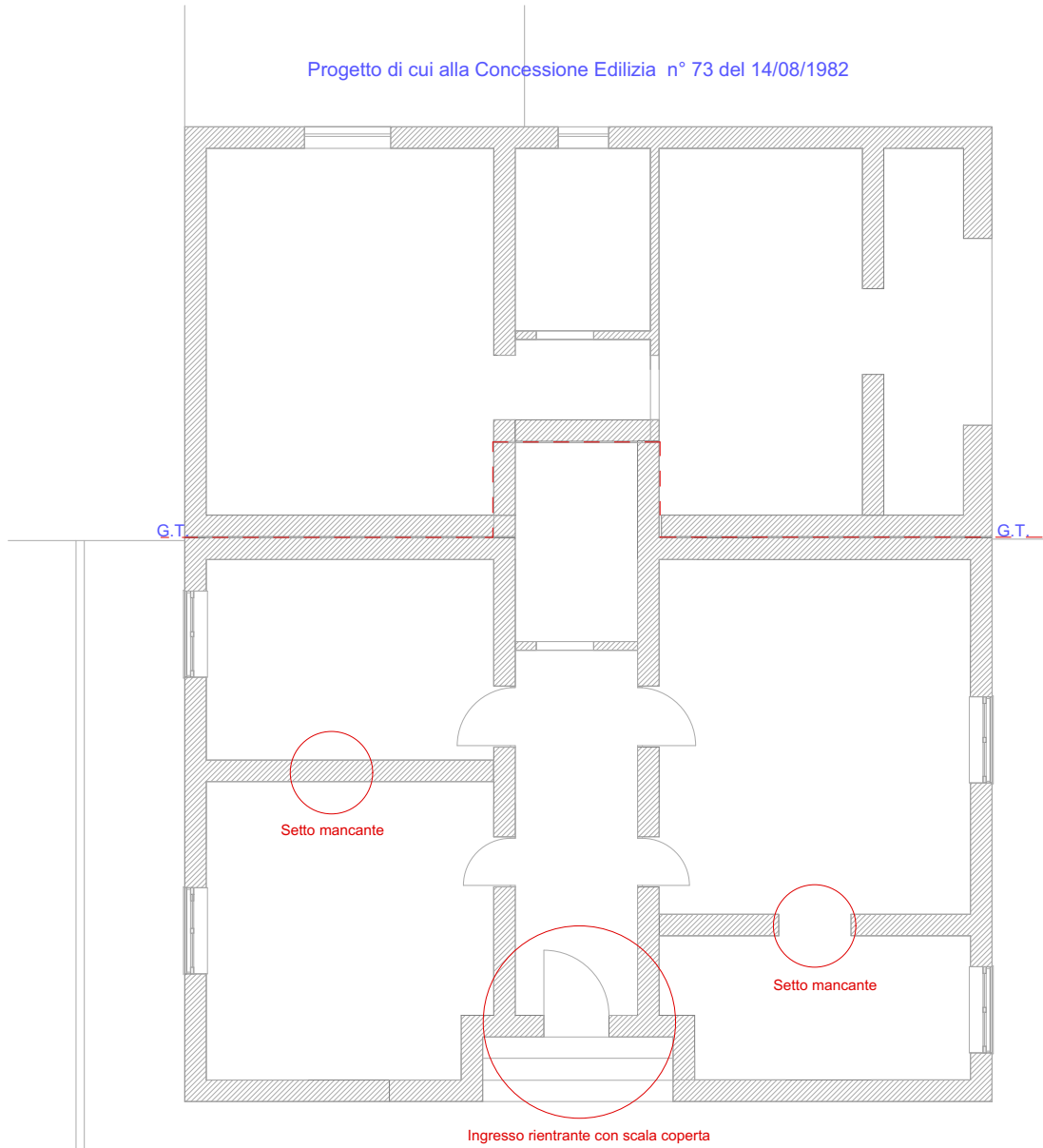


STATO ATTUALE

F. 46 - Part.IIa 575 sub 4 Soffitta



Progetto di cui alla Concessione Edilizia n° 73 del 14/08/1982



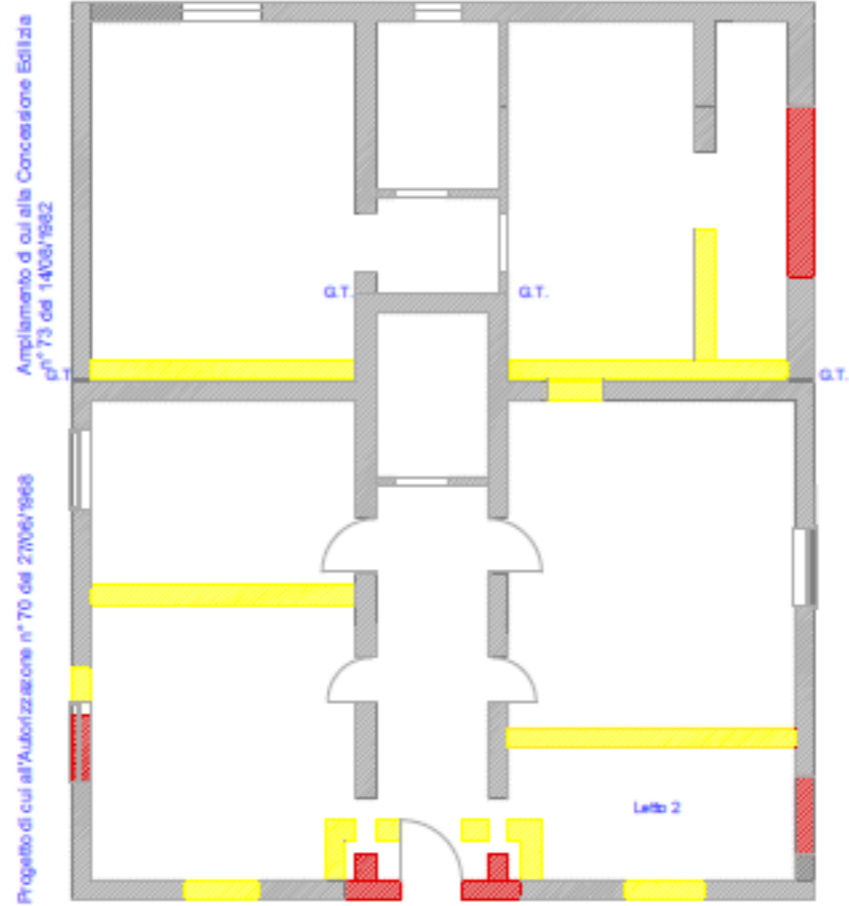
Progetto di cui all'Autorizzazione n° 70 del 27/06/1968



F. 46 - Part.IIa 575 sub 4 P.T.
Incongruenze Progetto/ Stato di fatto



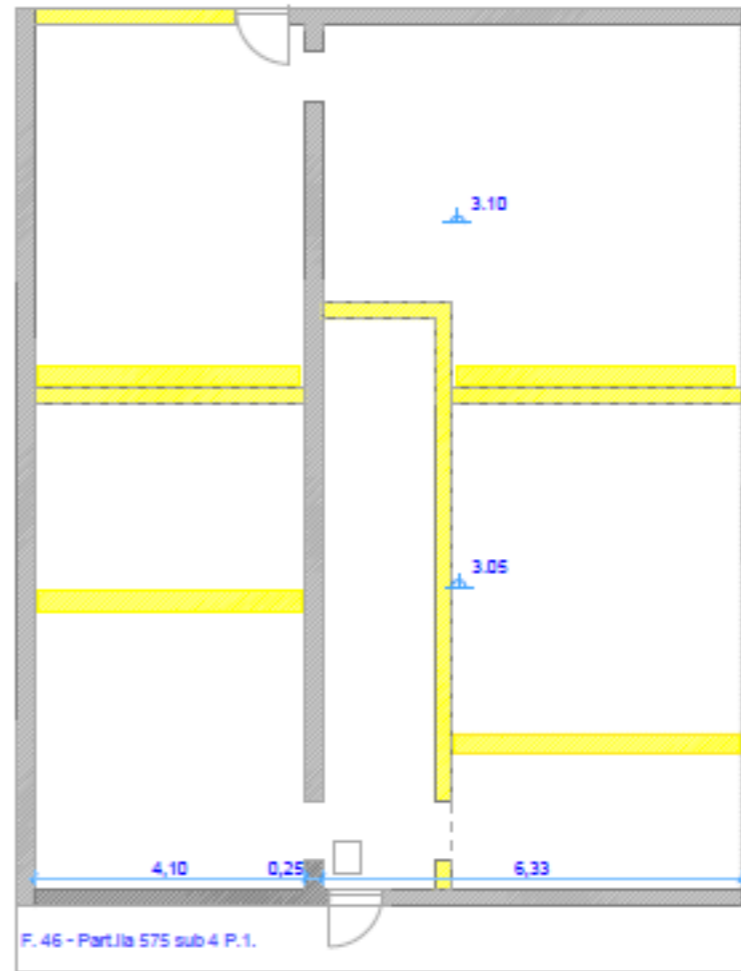
F. 46 - Part.Ila 575 sub 2 P.T.



F. 46 - Part.Ila 575 sub 4 P.T.

- Murature mancanti o demolite
- Murature realizzate non come progetto

F. 46 - Part.Ila 575 sub 2 P.1.

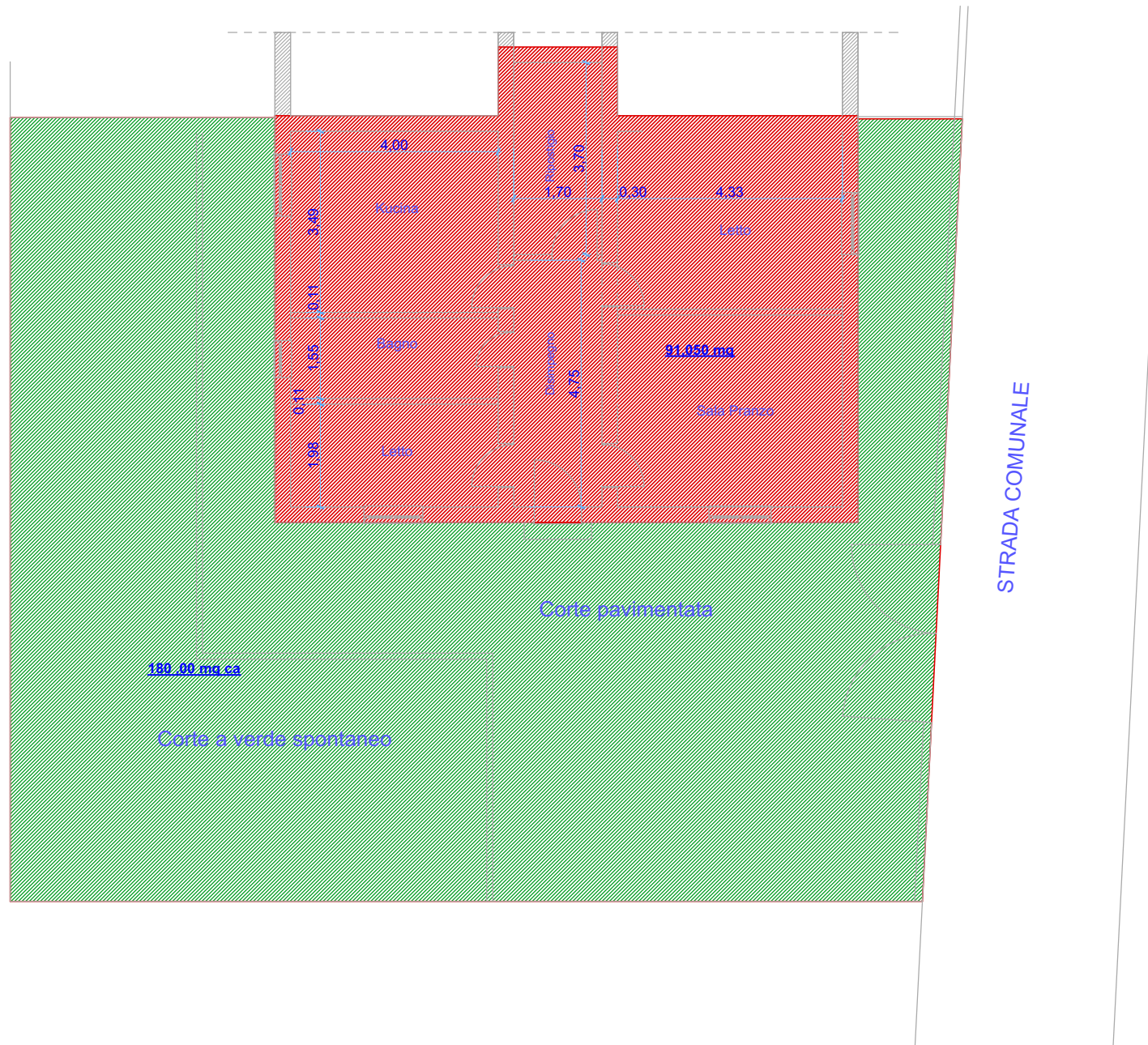


F. 46 - Part.Ila 575 sub 4 P.1.



SUPERFICIE OGGETTO DI STIMA

F. 46 - Part.IIa 575 sub 4 P.T.



SUPERFICIE OGGETTO DI STIMA

F. 46 - Part.IIa 575 sub 4 P.1.

