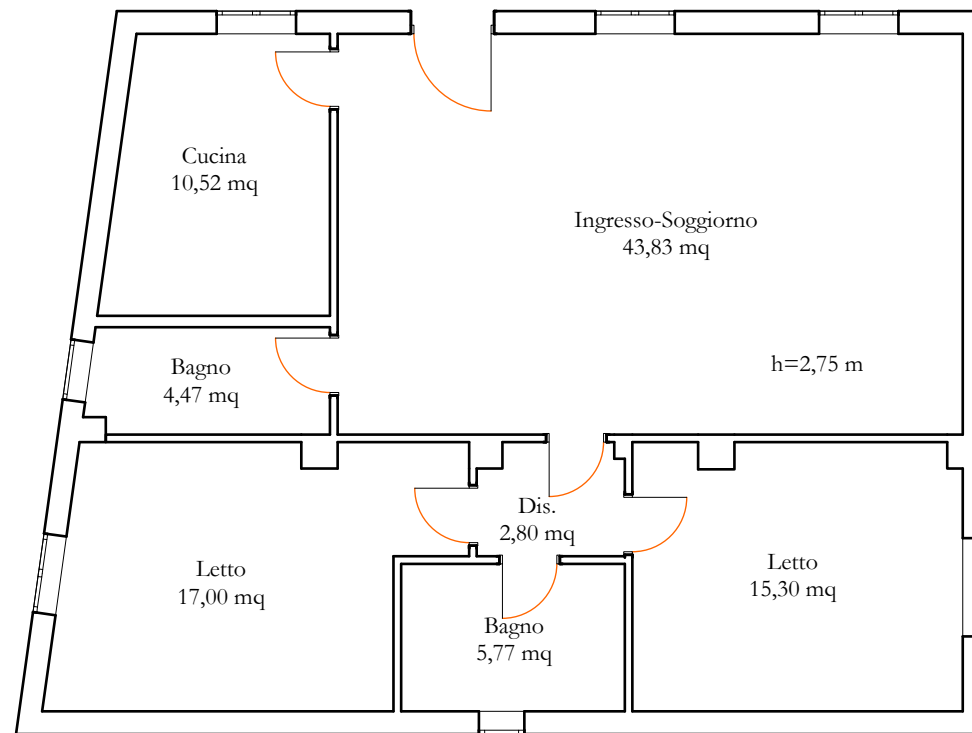
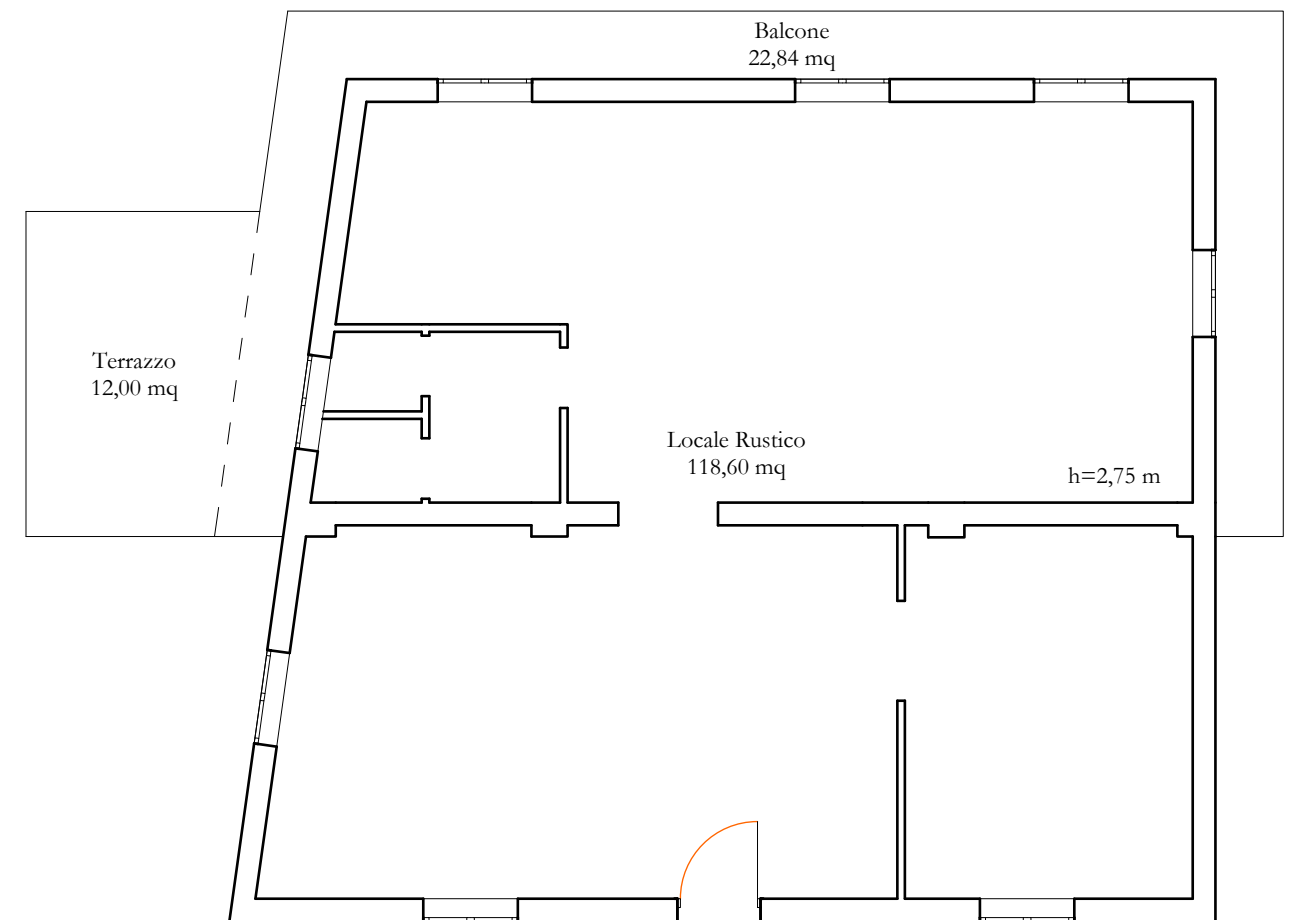


PLANIMETRIA DA RILIEVO
COMUNE DI MENDICINO (CS)-C/da Papparuzzo, snc.
Stalla a Piano Terra e Primo N.C.E.U. Fg.30-P.IIa 398

PIANO TERRA



PIANO PRIMO



Superficie netta Piano Terra (Snpt)
Snpt = 99,69 mq
Superficie lorda commerciale Piano Terra (Slcpt)
Slcpt = 116,22 mq
Superficie netta Piano Primo (Snpp)
Snpp = 118,60 mq
Superficie lorda commerciale Piano Primo (Slcpp)
Slcpp = 136,66 mq
Superficie Balcone (Sb)
Sb = 22,84 mq
Superficie Terrazzo in abuso (St)
St = 12,00 mq
Superficie netta totale (Snt)
Snt = Snpt+Snpp = 99,69+118,60 = 218,29 mq
Superficie lorda commerciale totale (Slct)
Slct = Slcpt+Slcpp = 116,22+136,66 = 252,88 mq

