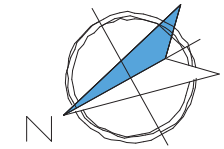
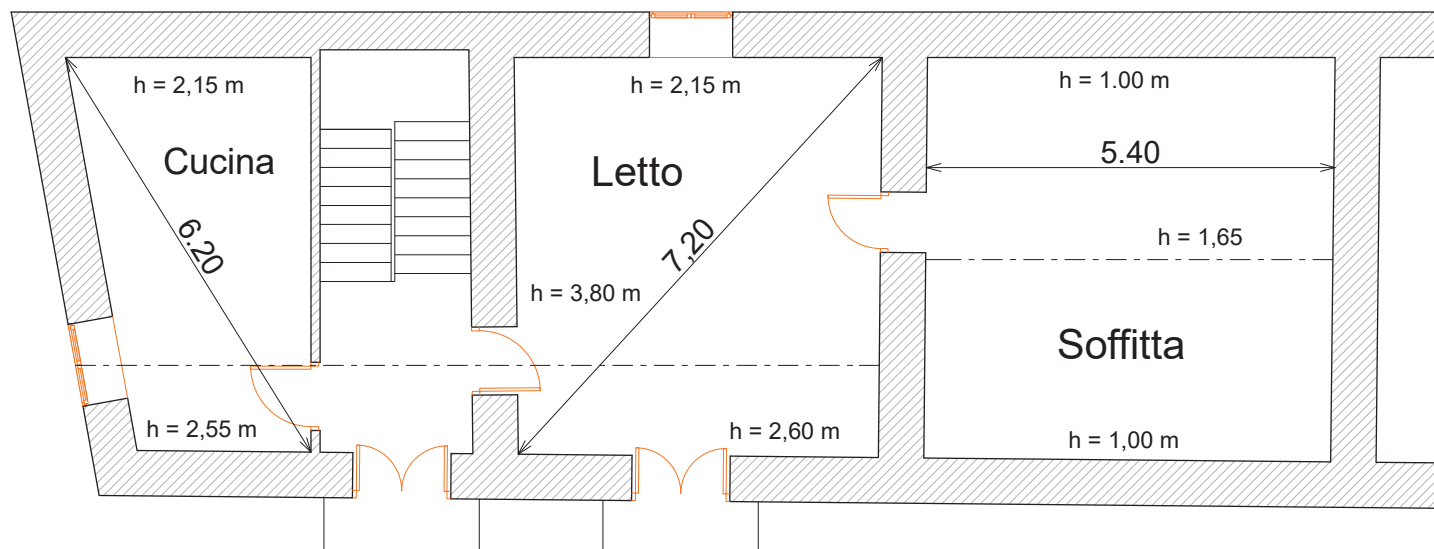
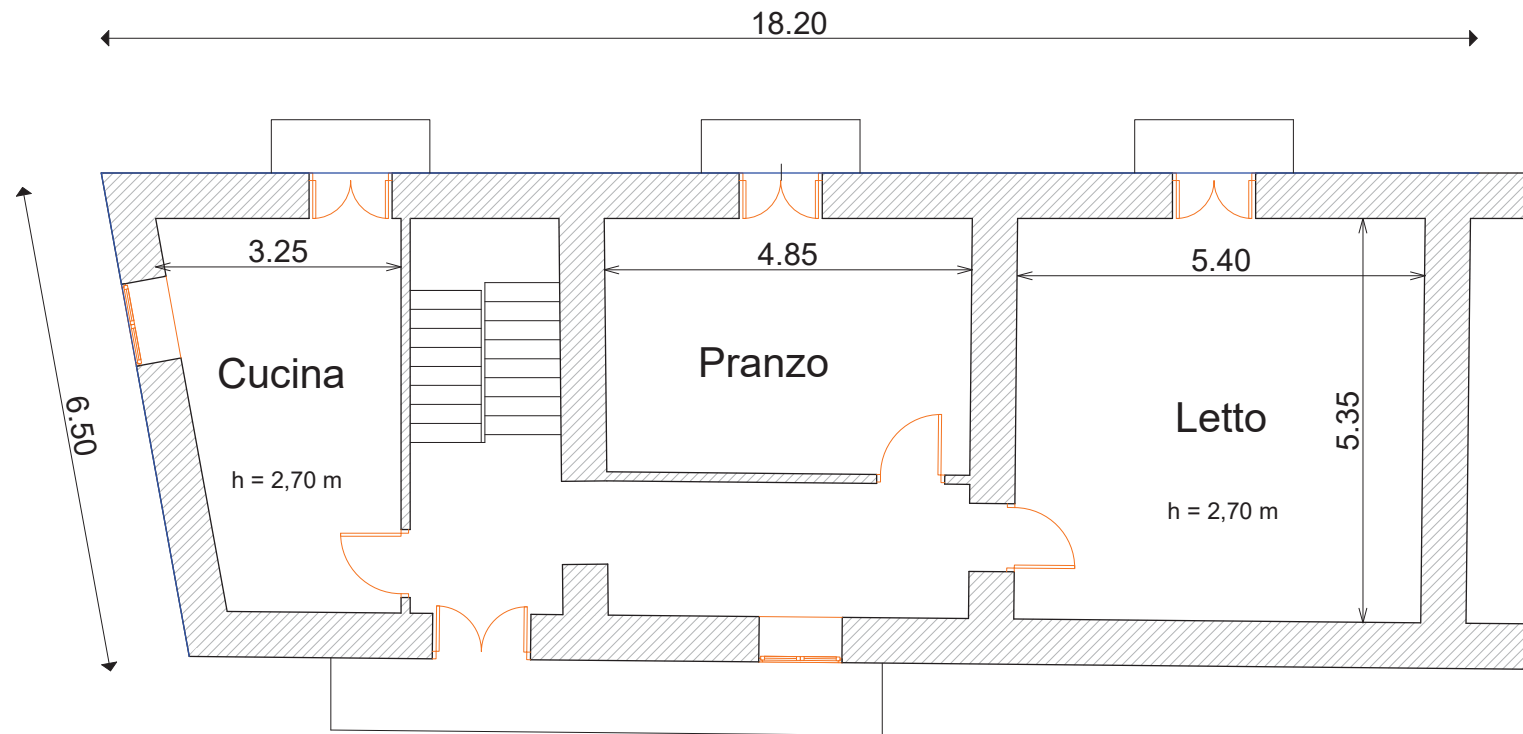


Tav. n. 5.5
Rilievo planimetrico

U.i.u. sita in Via Roma n. 65, Rota Greca (CS)
 foglio 6, p.lla 196, sub 4 - proprietà Calabrese Maurizio



Scala 1:100



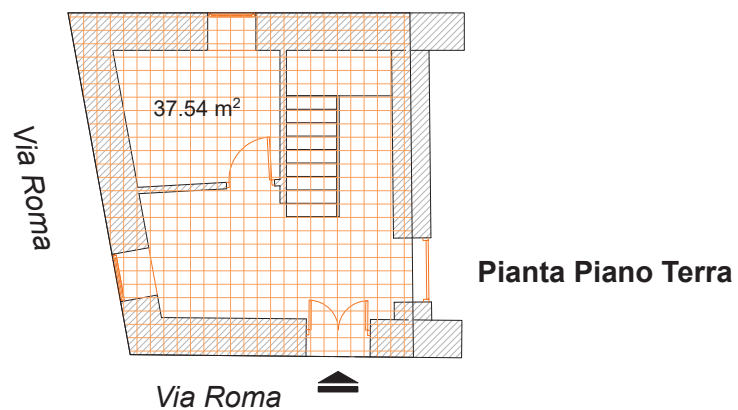
Tav. n. 5.6

Superficie commerciale rilevata

U.i.u. sita in Via Roma n. 65, Rota Greca (CS)
foglio 6, p.lla 196, sub 4 - proprietà Calabrese Maurizio

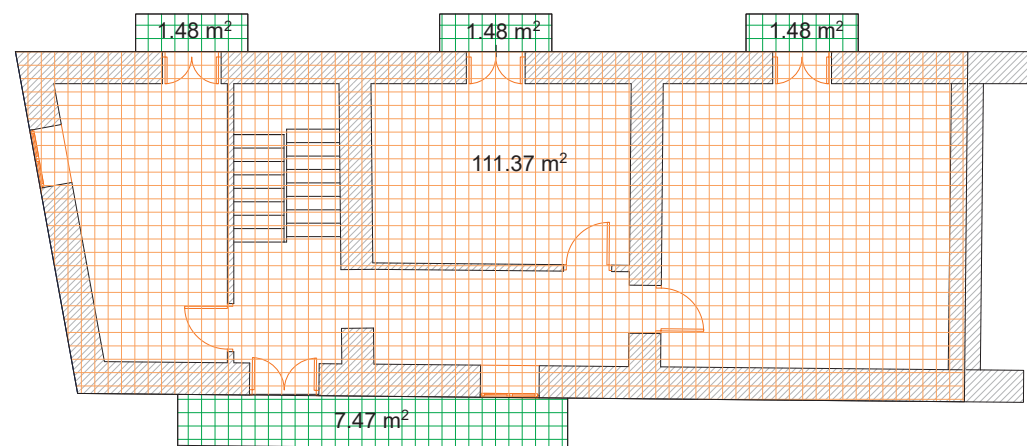


Scala 1:100

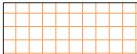
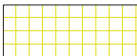




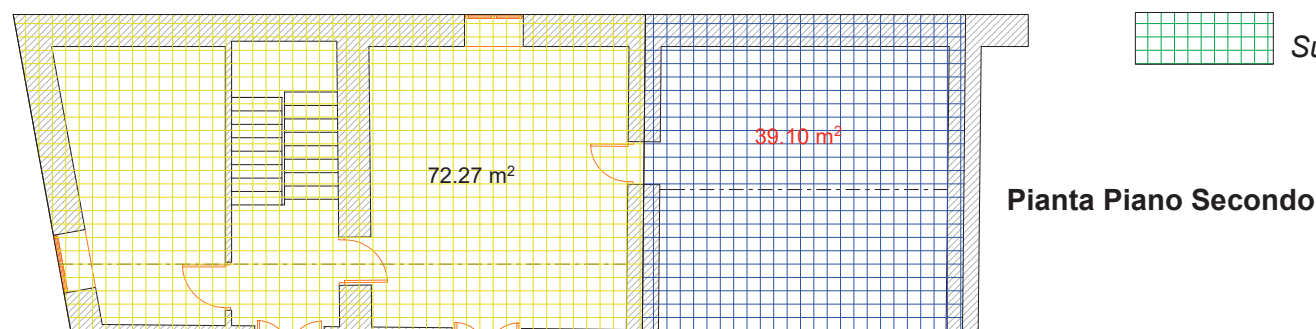
Pianta Piano Terra

Pianta Piano Primo



LEGENDA:

-  *Superficie commerciale principale*
-  *Superficie pertinenze: camere a tetto o soffitte*
-  *Superficie pertinenze: cantine e solai inabitabili*
-  *Superficie pertinenze: balconi scoperti*



Pianta Piano Secondo