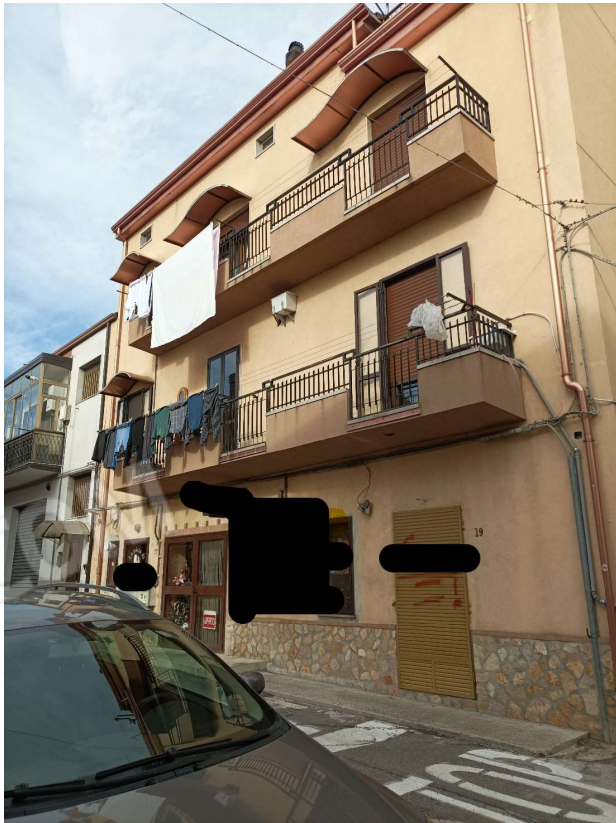


PROCEDURA n. 65/2023 R.G.E.I.

REPERTORIO FOTOGRAFICO



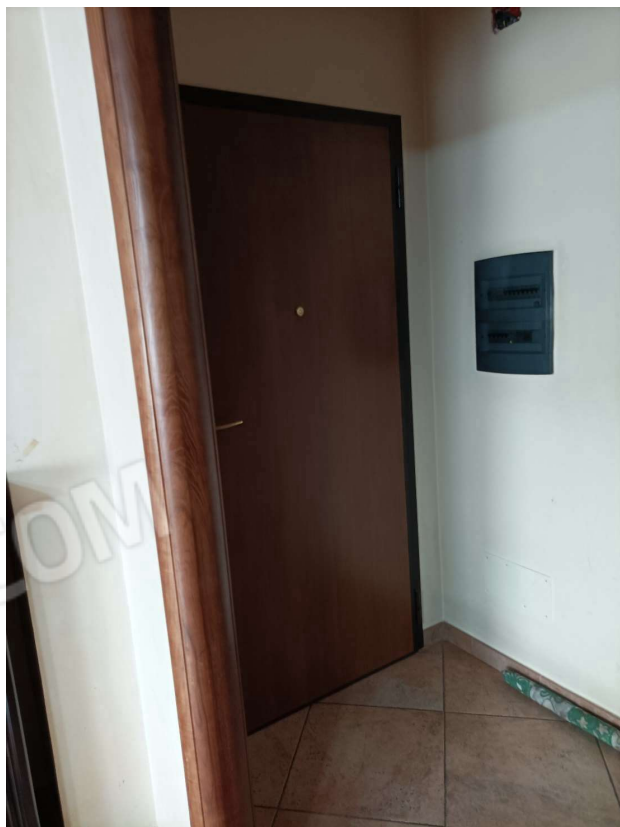
The image shows a handwritten signature in blue ink over a circular official stamp. The stamp is from the Court of Auditors of the Province of Fano. The text on the stamp includes "CORTE DEI CONTI DELLA PROVINCIA DI FANO", "CORTE DEI CONTI", "FANO", "ADAMO", and "Sett. III".



FACCIATA ESTERNA APPARTAMENTO POSTO AL 2° PIANO



ESTERNO INGRESSO EDIFICIO



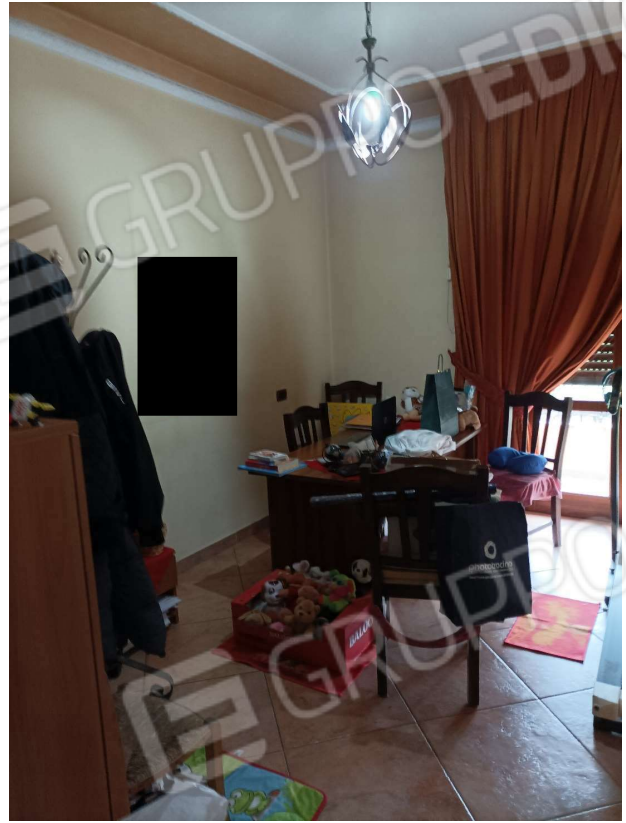
INGRESSO



CORRIDOIO



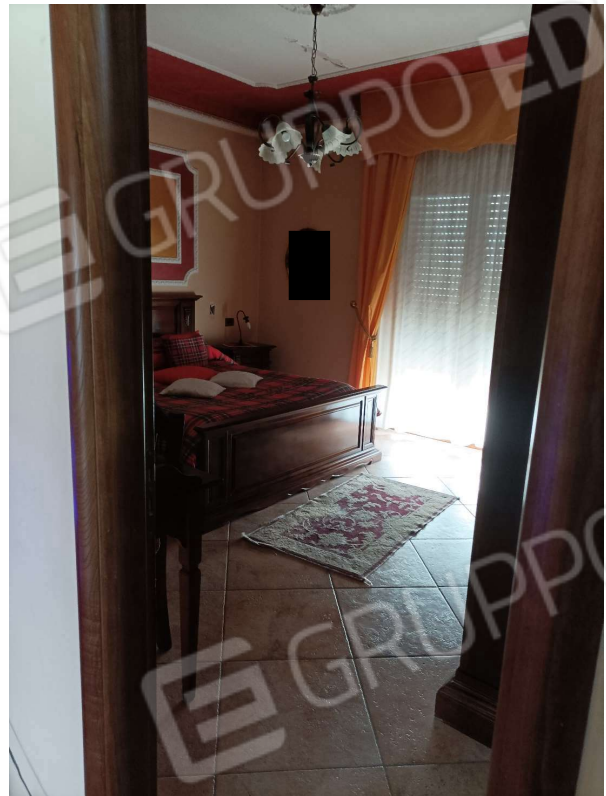
CUCINA



STANZA



SOGGIORNO



STANZA DA LETTO MATRIMONIALE



BAGNO (IN STANZA MATRIMONIALE)



STANZA DA LETTO



LAVANDERIA



BAGNO