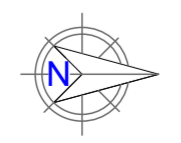
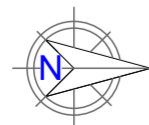
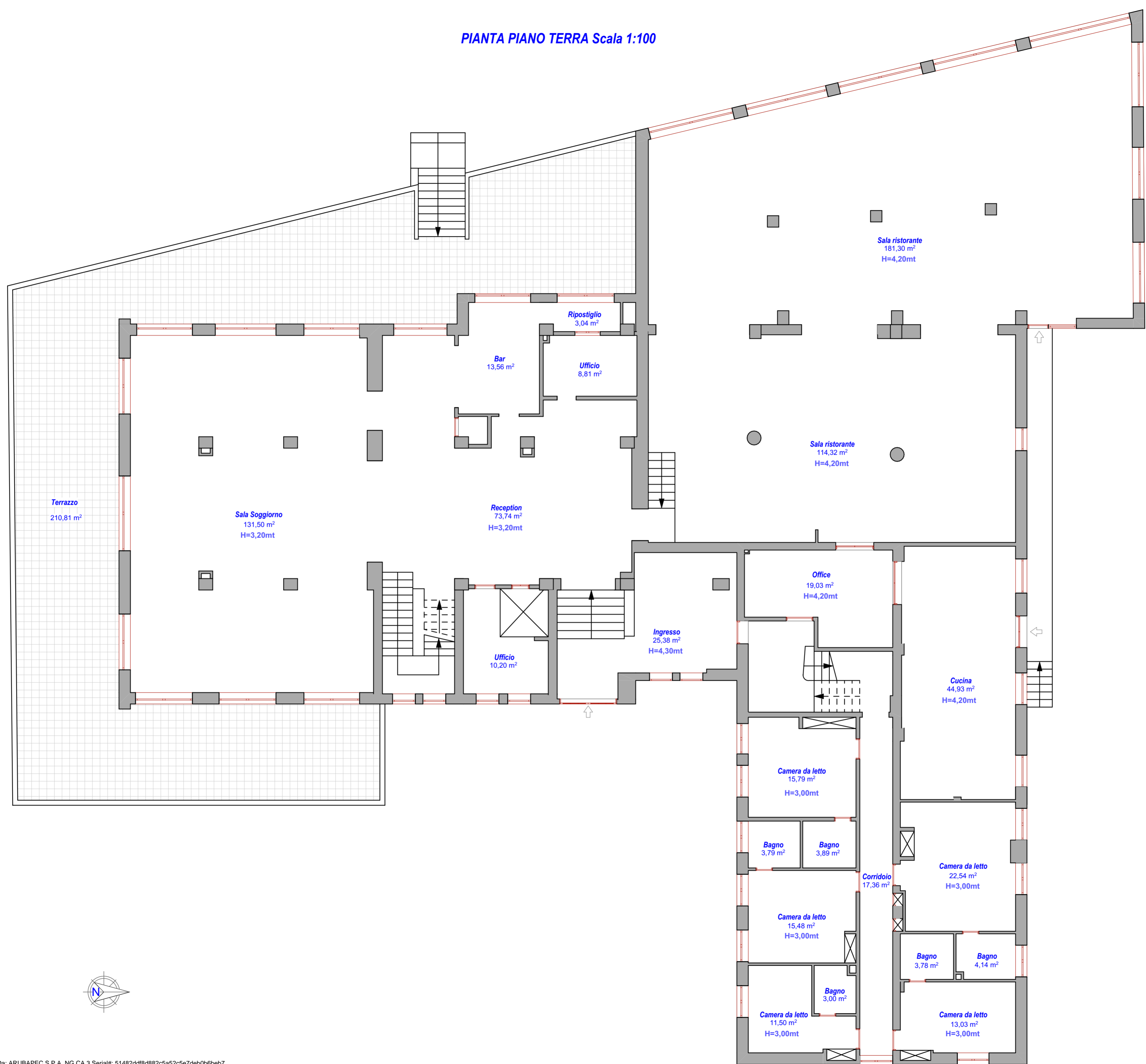


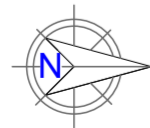
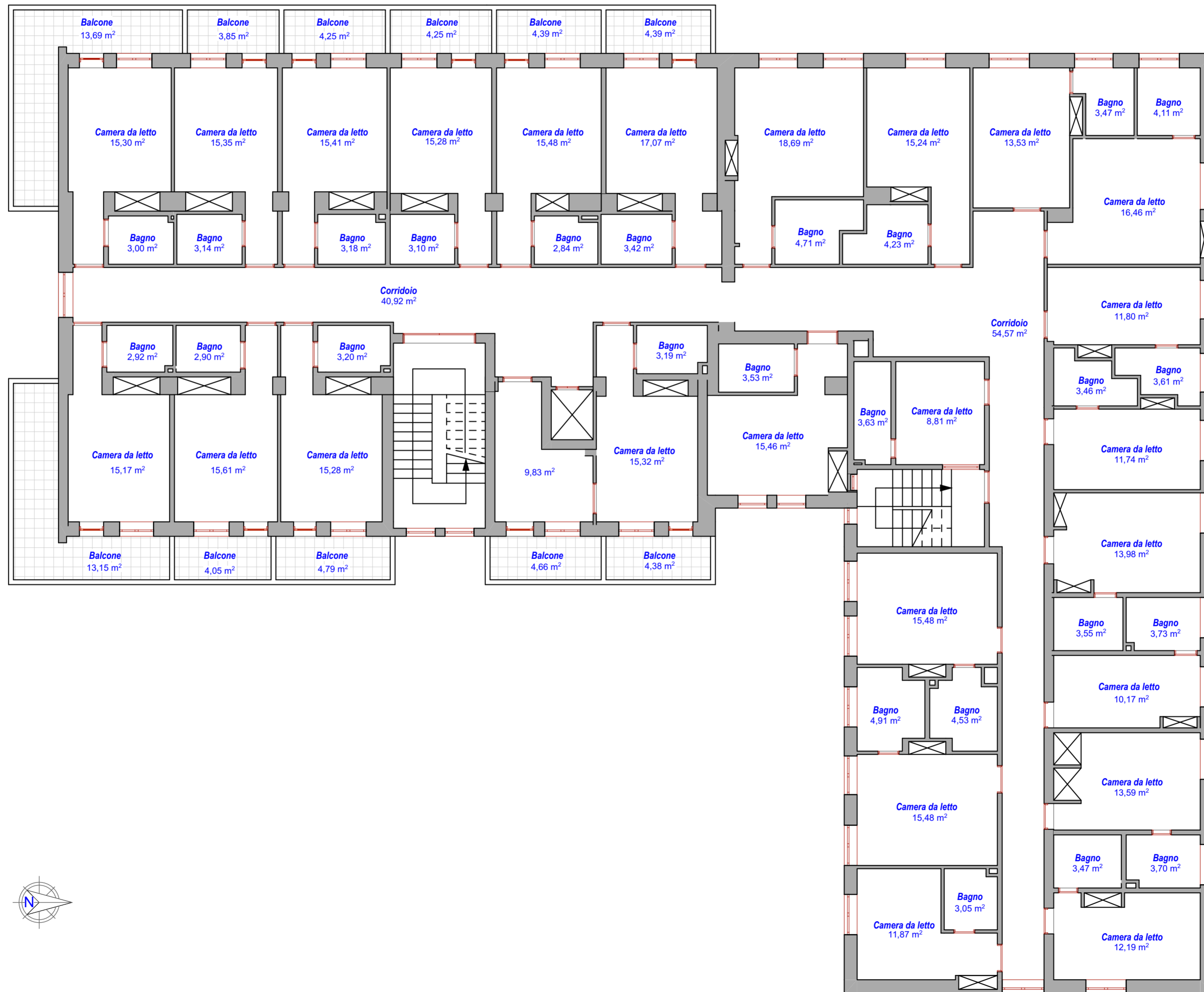
PIANTA PIANO PRIMO SOTTOSTRADA- Scala 1:100
H = 2,55 mt



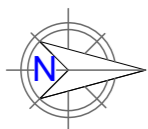
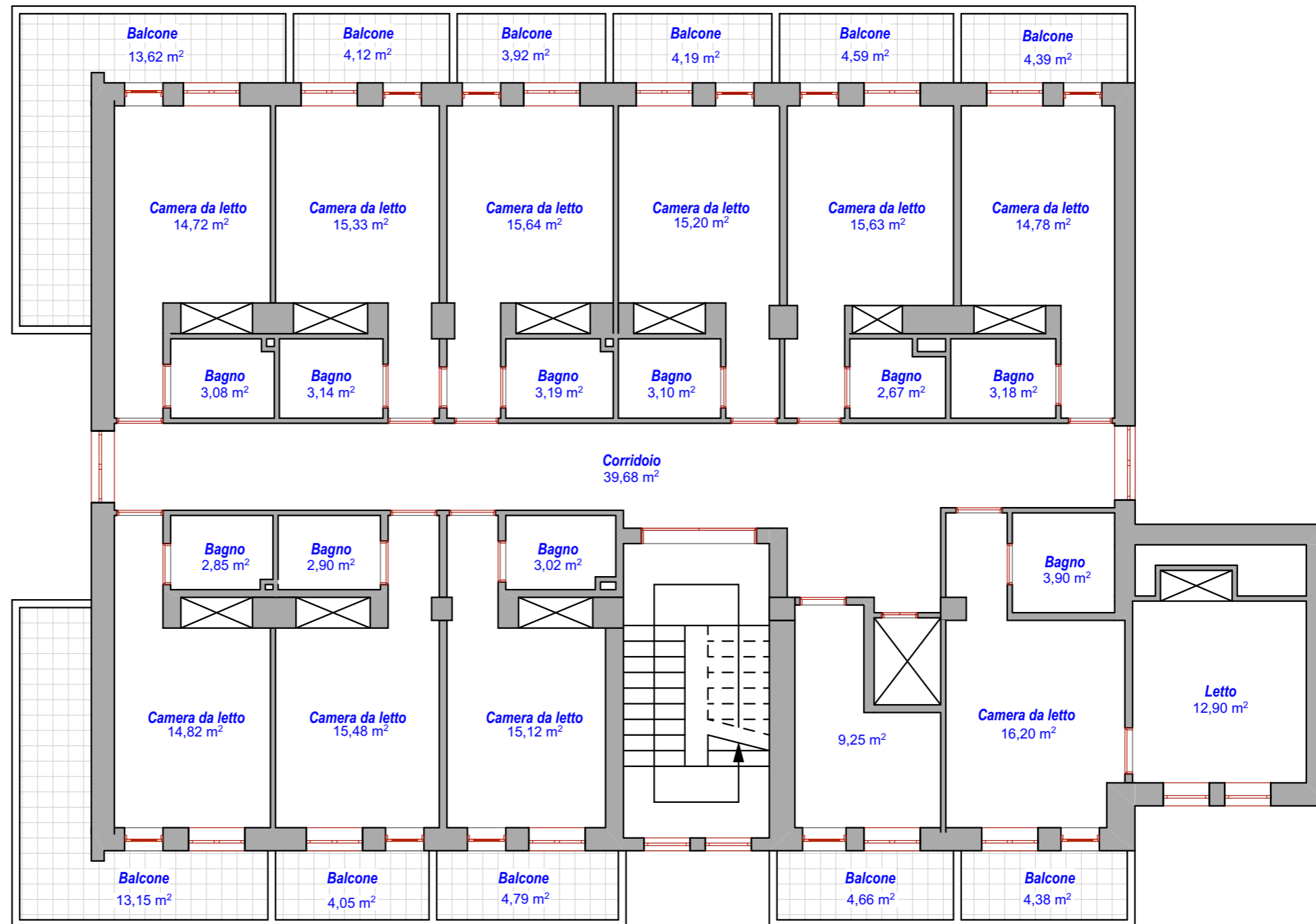
PIANTA PIANO TERRA Scala 1:100



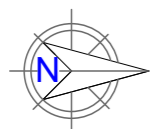
PIANTA PIANO PRIMO - Scala 1:100
H = 3,00 mt



PIANTA PIANO SECONDO - Scala 1:100
H = 3,00 mt



PIANTA PIANO TERZO - Scala 1:100
H = 3,05 mt



PIANTA PIANO QUARTO/SOTTOTETTO - Scala 1:100
H = 2,10 mt

