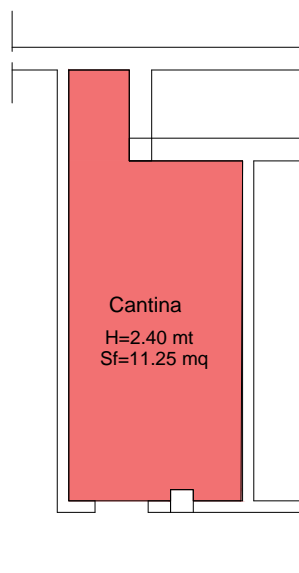
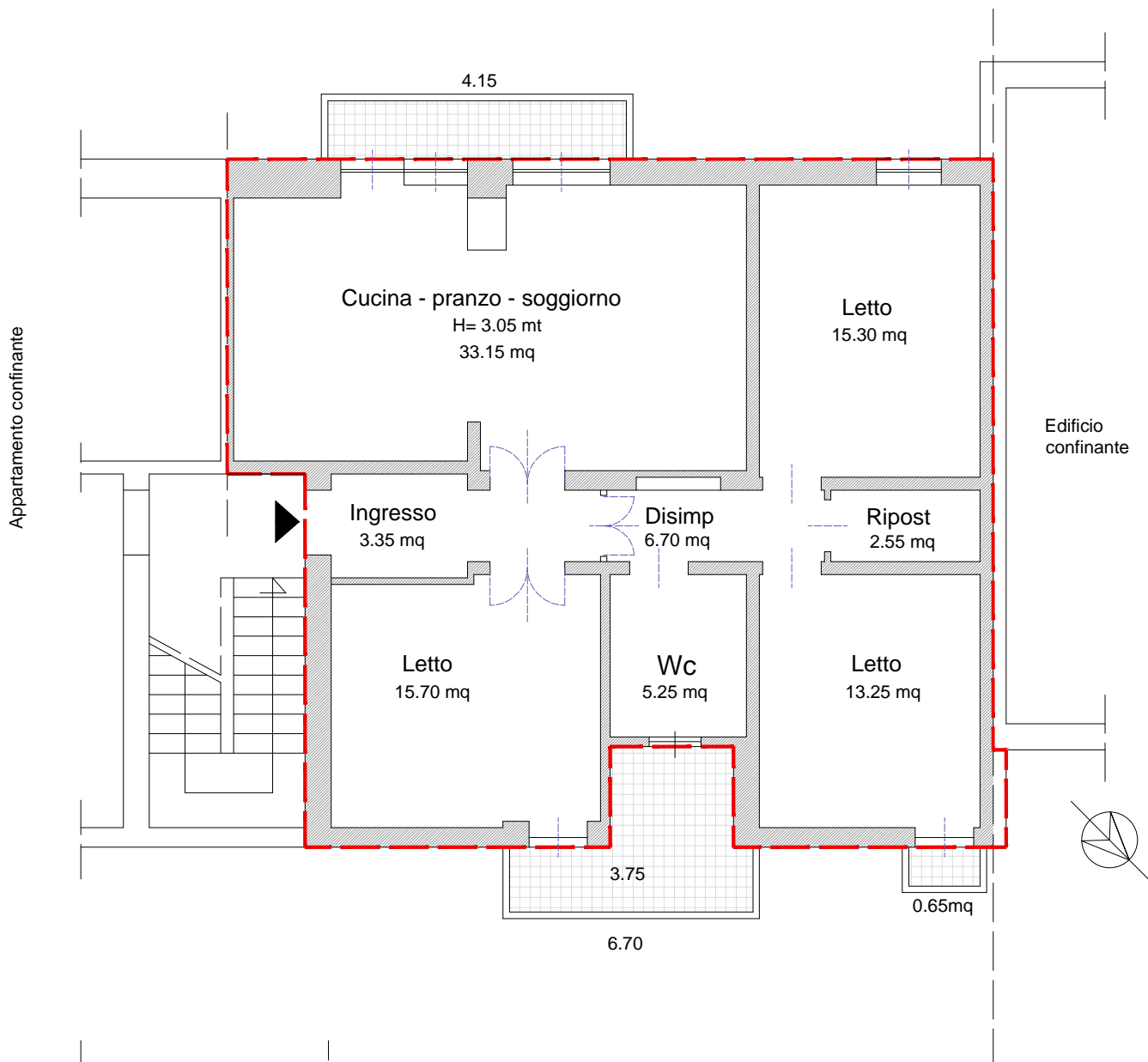
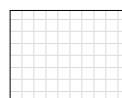


RILIEVO STATO DI FATTO

scala 1:100



----- Superficie lorda residenziale **115,35 mq**



Superficie pertinenze scoperte
mq(4.15+3.75+0.65)=mq 8.55 x 25% = **2,13 mq**



Superficie pertinenze accessorie
mq 11,25 x 25% = **2,81 mq**

TOTALE SUPERFICIE COMMERCIALE 120,30 mq