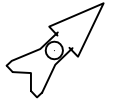
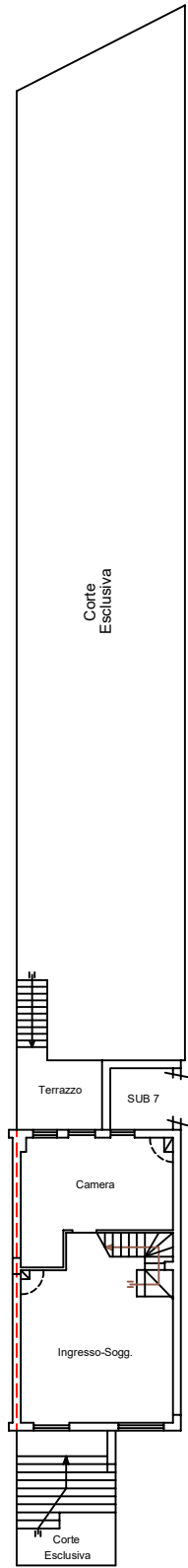


## 5. GRAFICI DEL RILIEVO ESEGUITO



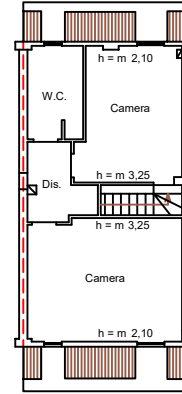


**Pianta Piano Terra**  
h = m 3,15



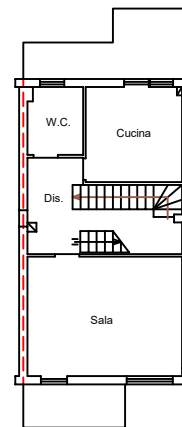
via Roma

**Pianta Piano Secondo**

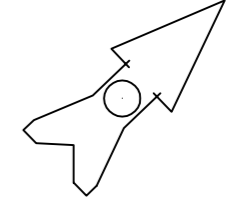


**Pianta Piano Primo**

mh 2,95



# PORZIONE FG 23 P.LLA 680 SUB 8



## Pianta P. Seminterrato

h = m 2,35

