

Tribunale di Napoli  
G.E. dott. M. CICCARELLI

c.t.u. arch. Pier Luigi Paglia

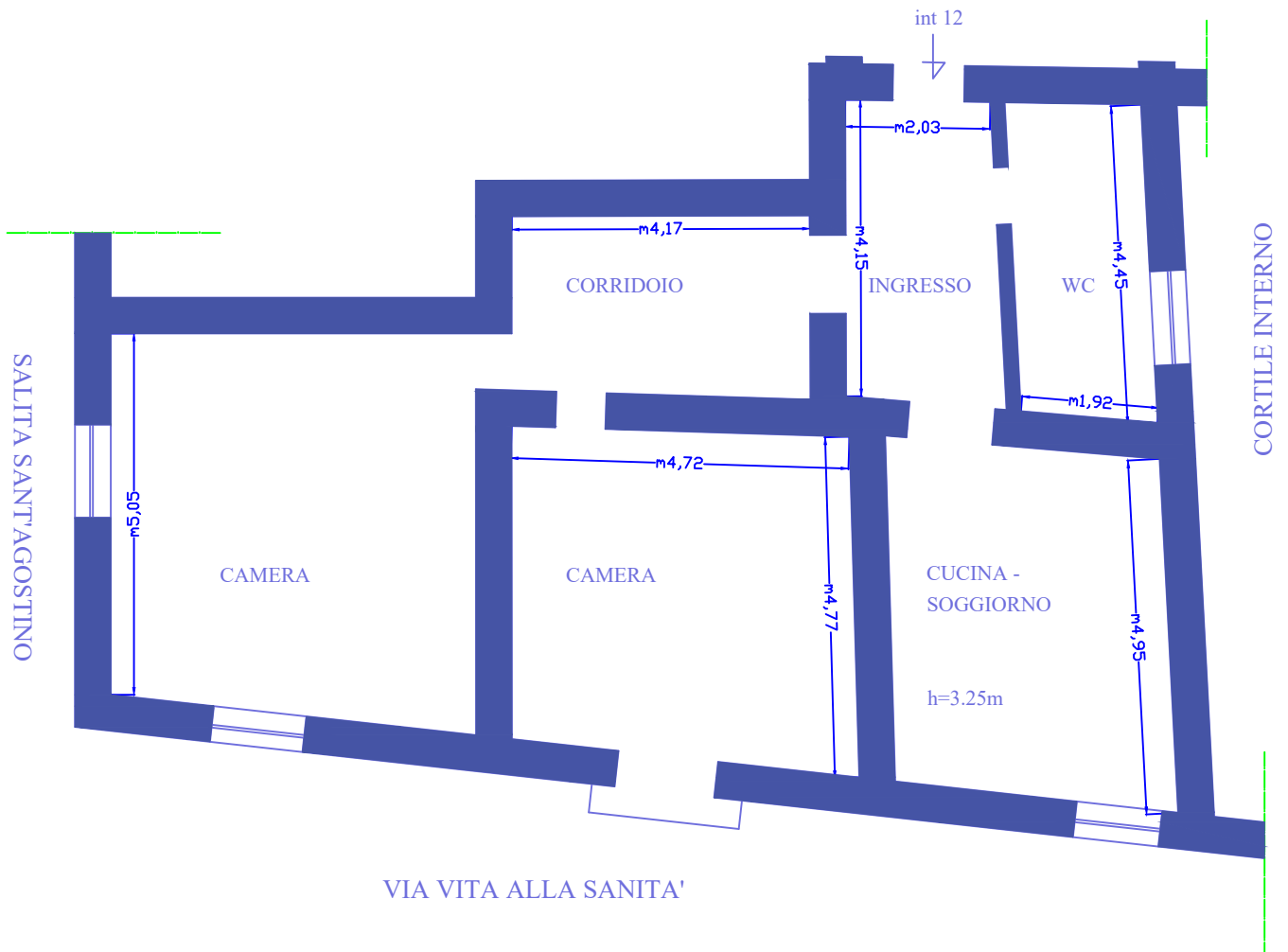
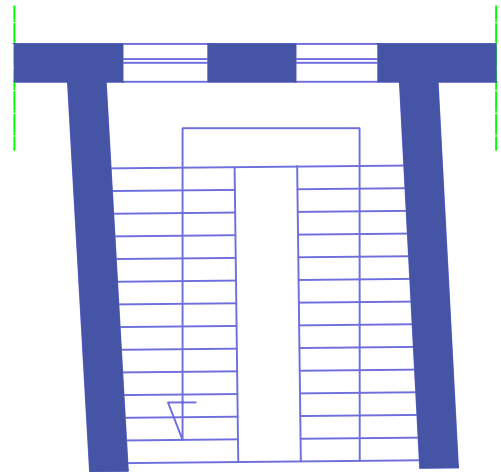
Grafico 1 Tav. 1

Procedura 51/2023

Pianta- rilievo

SCALA 1:100

NORD



pianta piano TERZO - int.12

s.u.=128,70 mq

s.n.r.=1,0 mq

s.c.= 128,70+ 0,3(1,0 x 0,30) = 129,00mq