

DOCUMENTAZIONE FOTOGRAFICA



ingresso principale



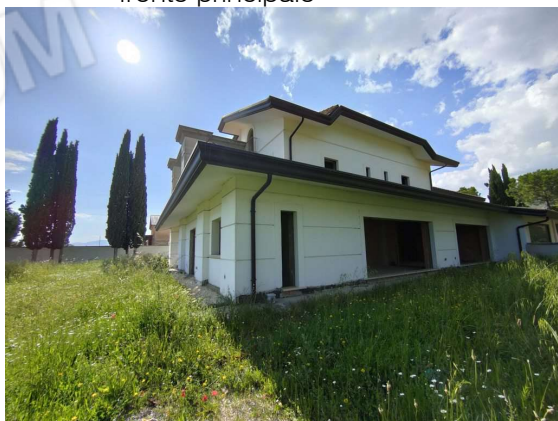
ingresso pedonale secondario



fronte principale



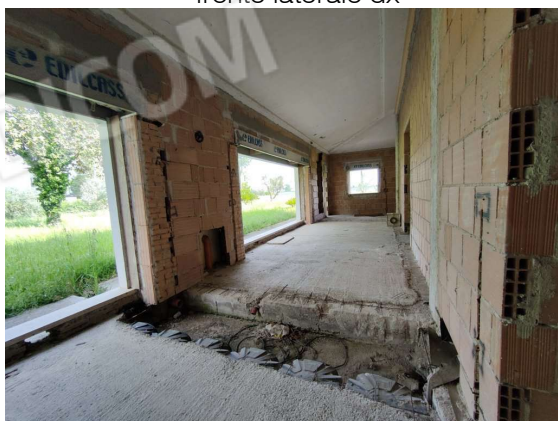
fronte laterale sx



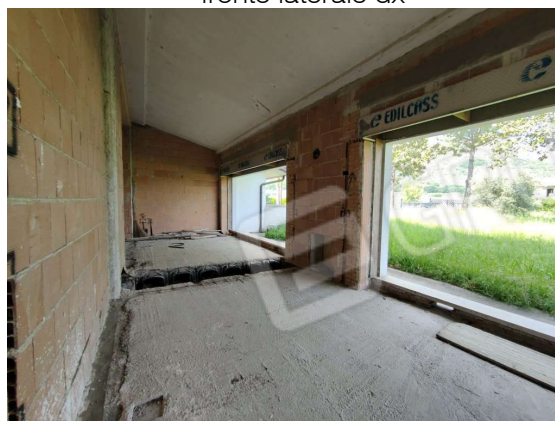
fronte laterale dx



fronte laterale dx



piano terra



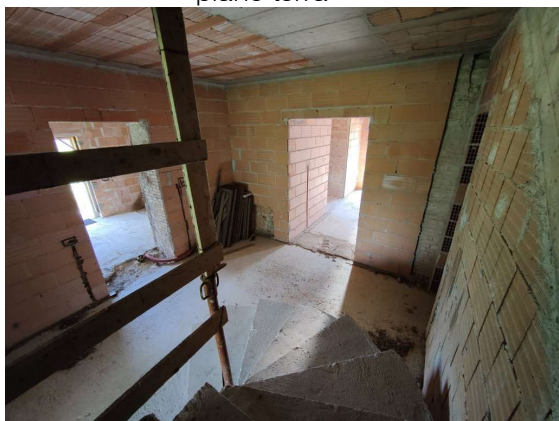
piano terra



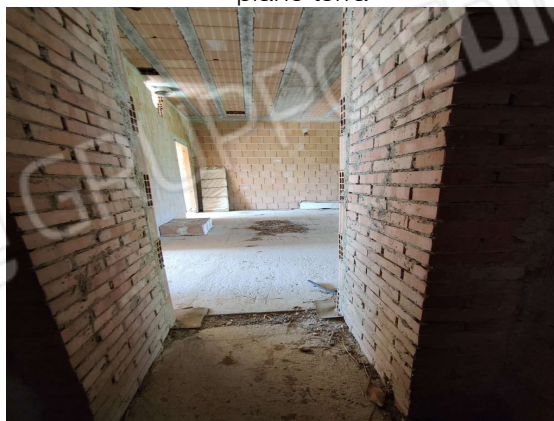
piano terra



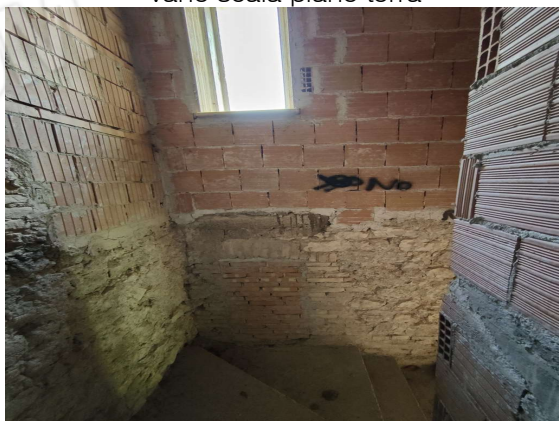
piano terra



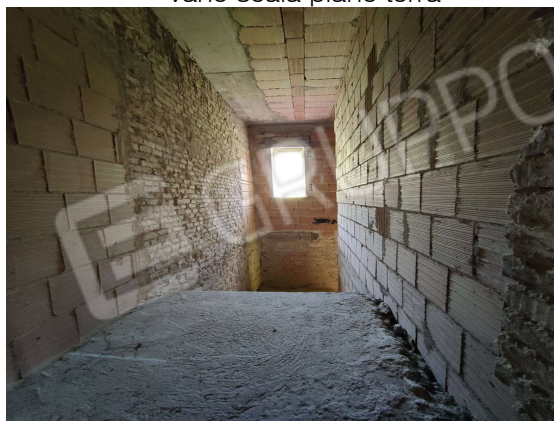
vano scala piano terra



vano scala piano terra



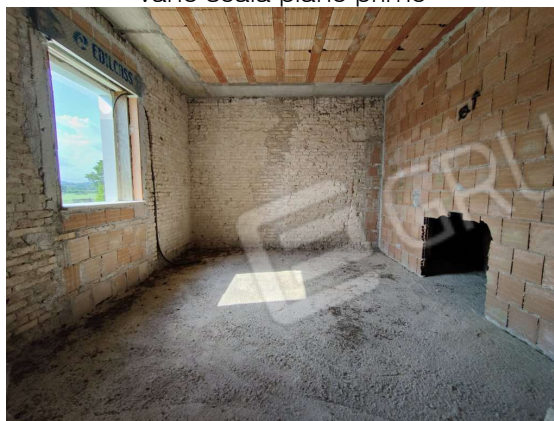
vano scala piano primo



vano scala piano primo



piano primo



piano primo



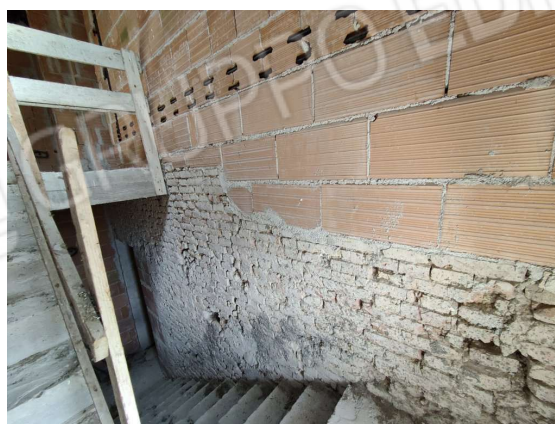
piano primo



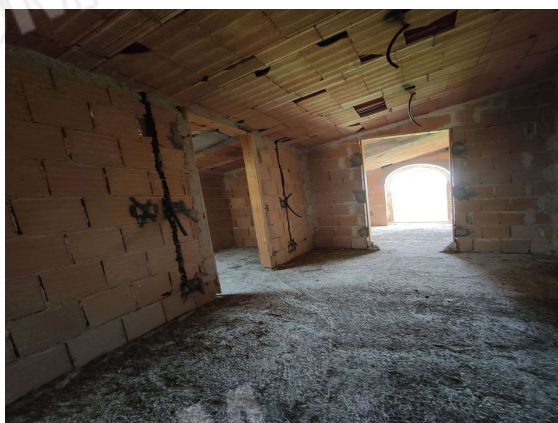
piano primo



vano scala piano sottotetto



vano scala piano sottotetto



piano sottotetto



piano sottotetto

Cassino 17 giugno 2022

Il Tecnico Incaricato
Ing. Gianluigi FIORILLO
firmato digitalmente