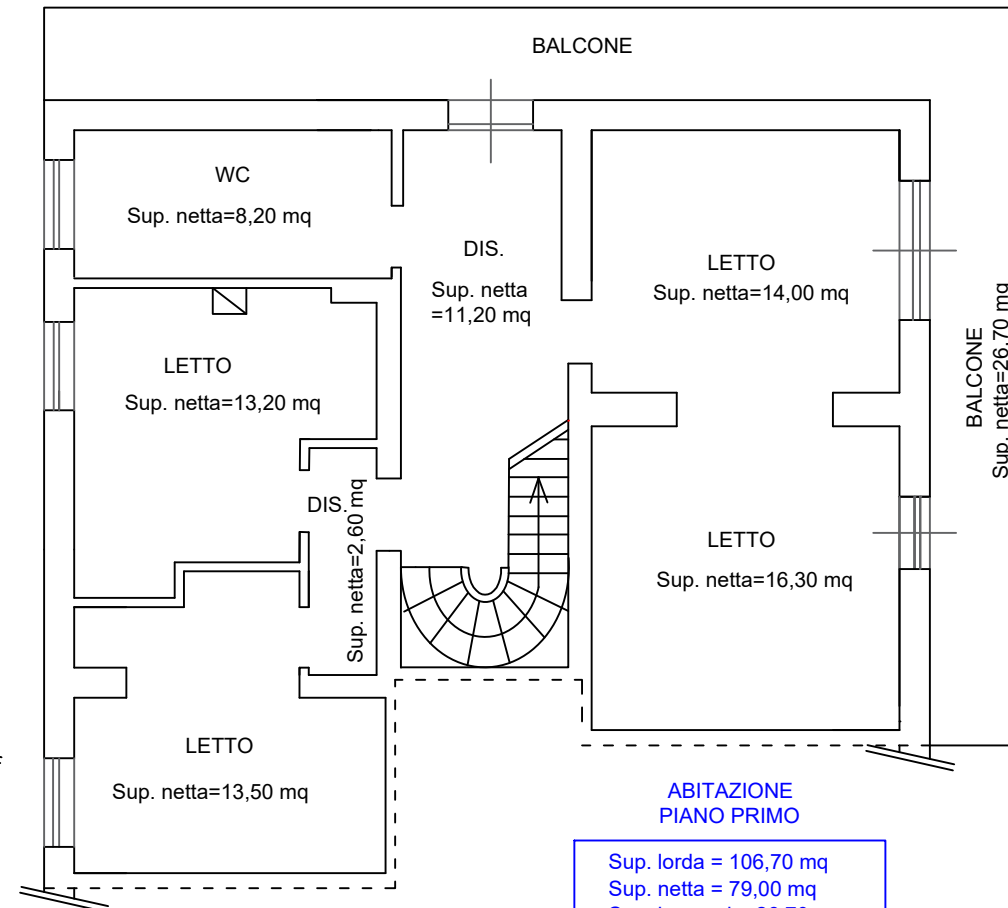


ABITAZIONE
PIANO TERRA

Sup. lorda = 114,70 mq
Sup. netta = 84,60 mq

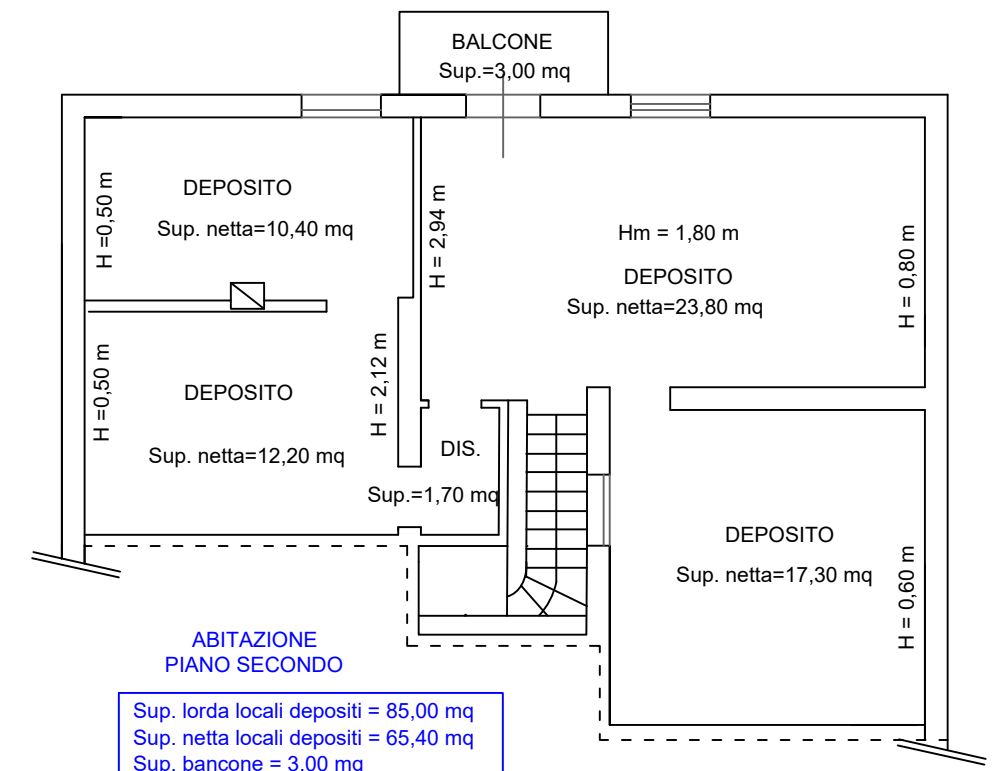
PIANO TERRA
H = 2,50 m



ABITAZIONE
PIANO PRIMO

Sup. lorda = 106,70 mq
Sup. netta = 79,00 mq
Sup. balconi = 26,70 mq

PIANO PRIMO
H = 2,80 m

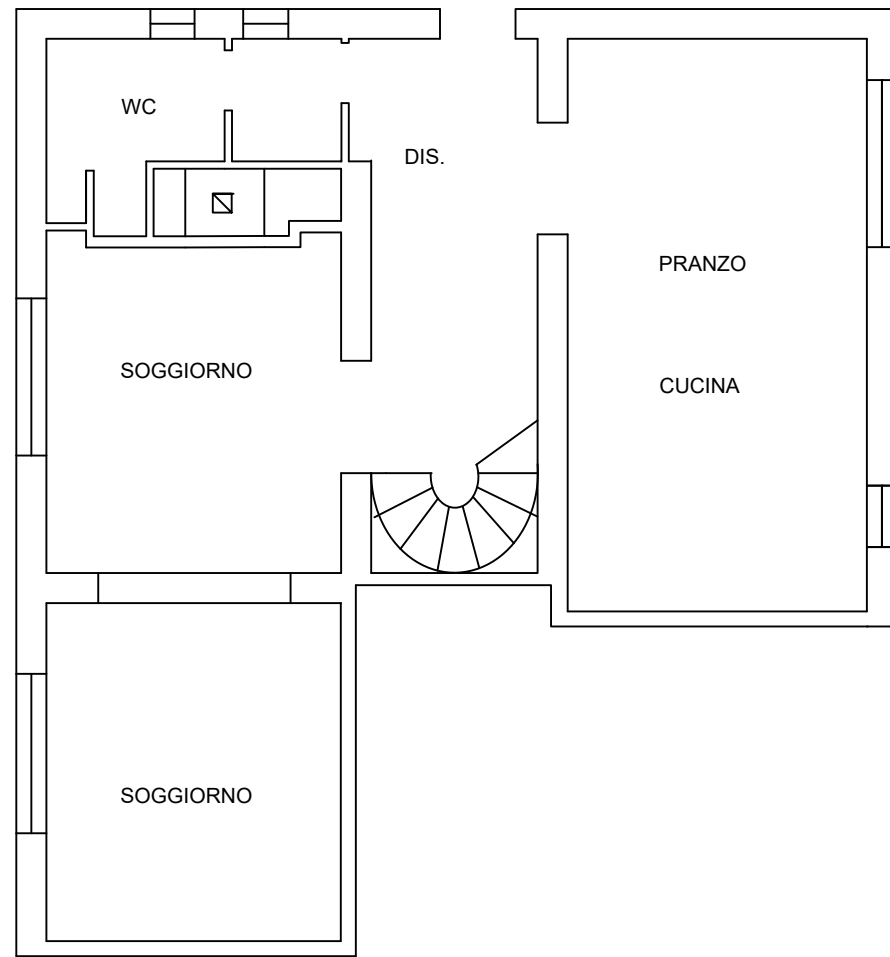


ABITAZIONE
PIANO SECONDO

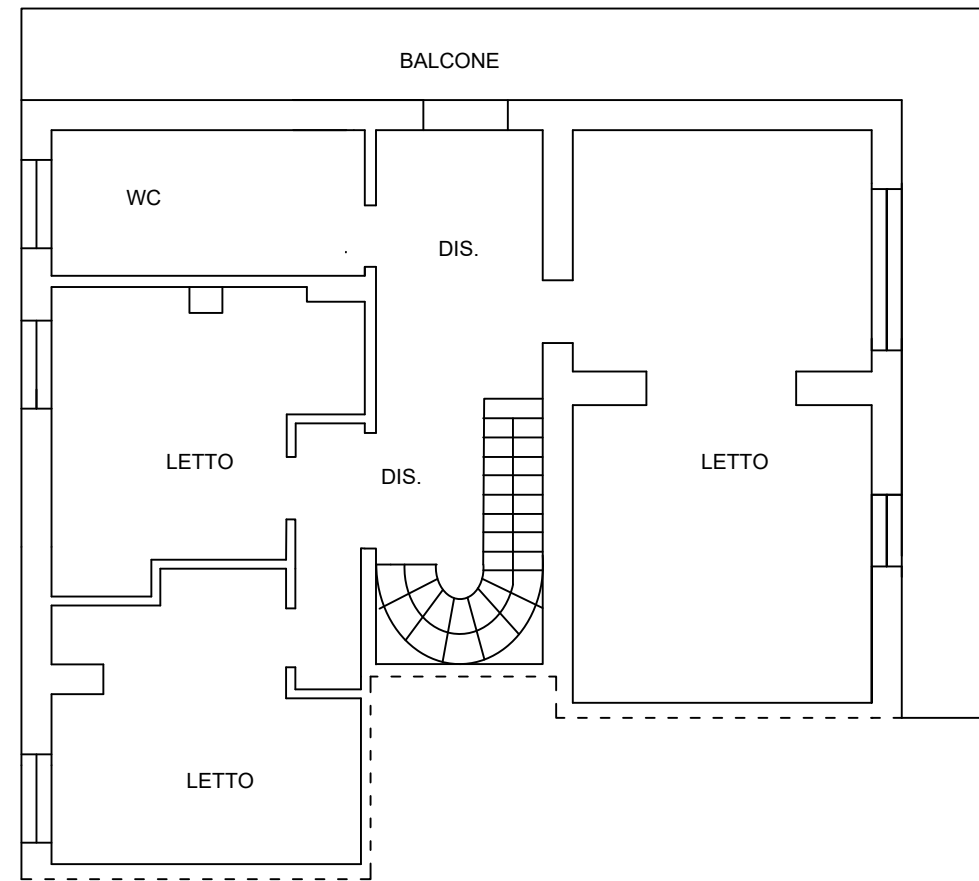
Sup. lorda locali depositi = 85,00 mq
Sup. netta locali depositi = 65,40 mq
Sup. balcone = 3,00 mq

PIANO SECONDO
Hm = 1,60 m

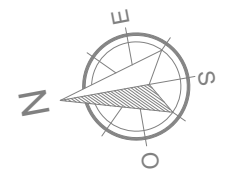


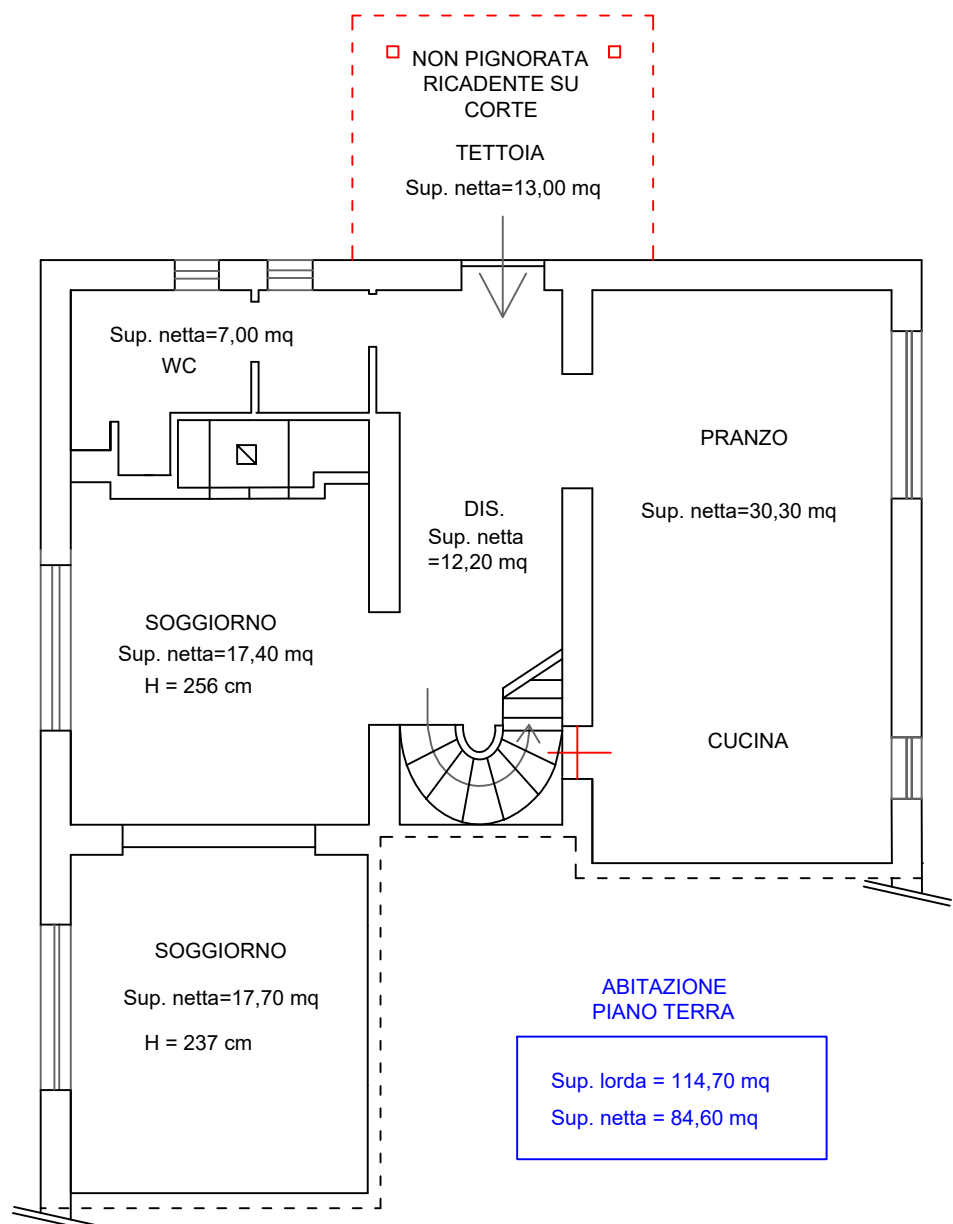


PIANO TERRA



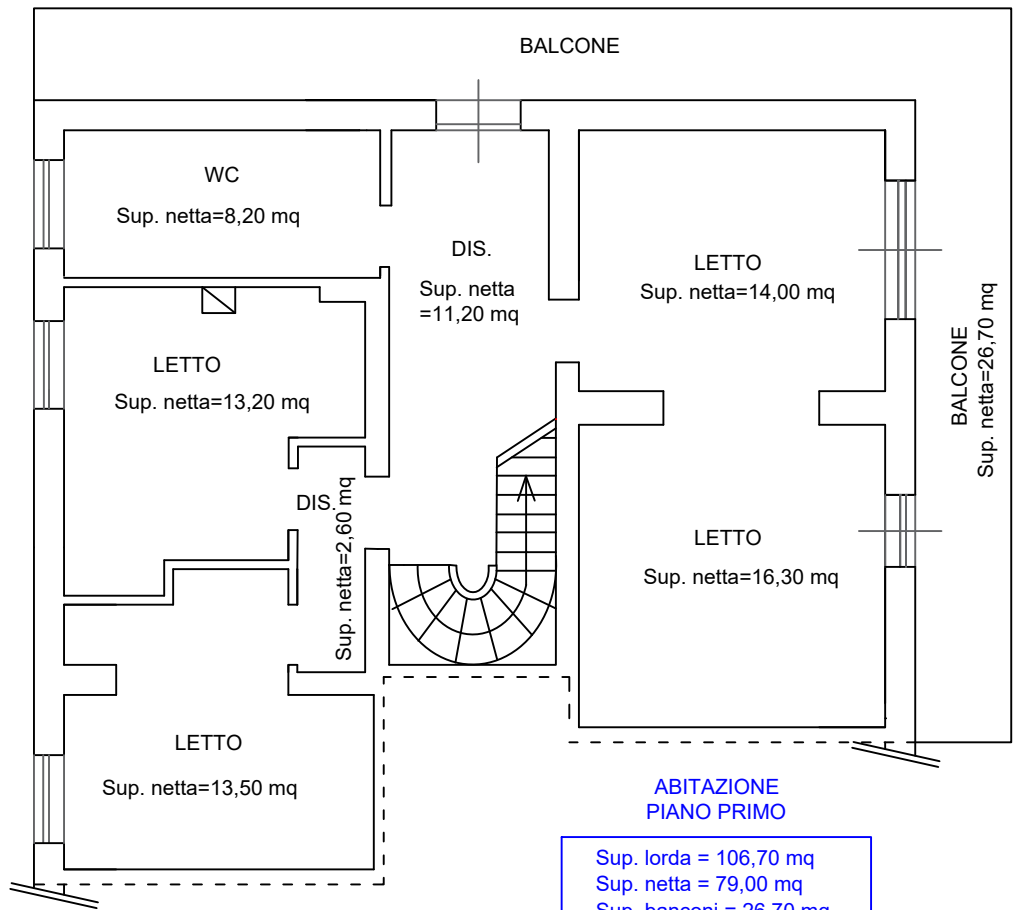
PIANO PRIMO





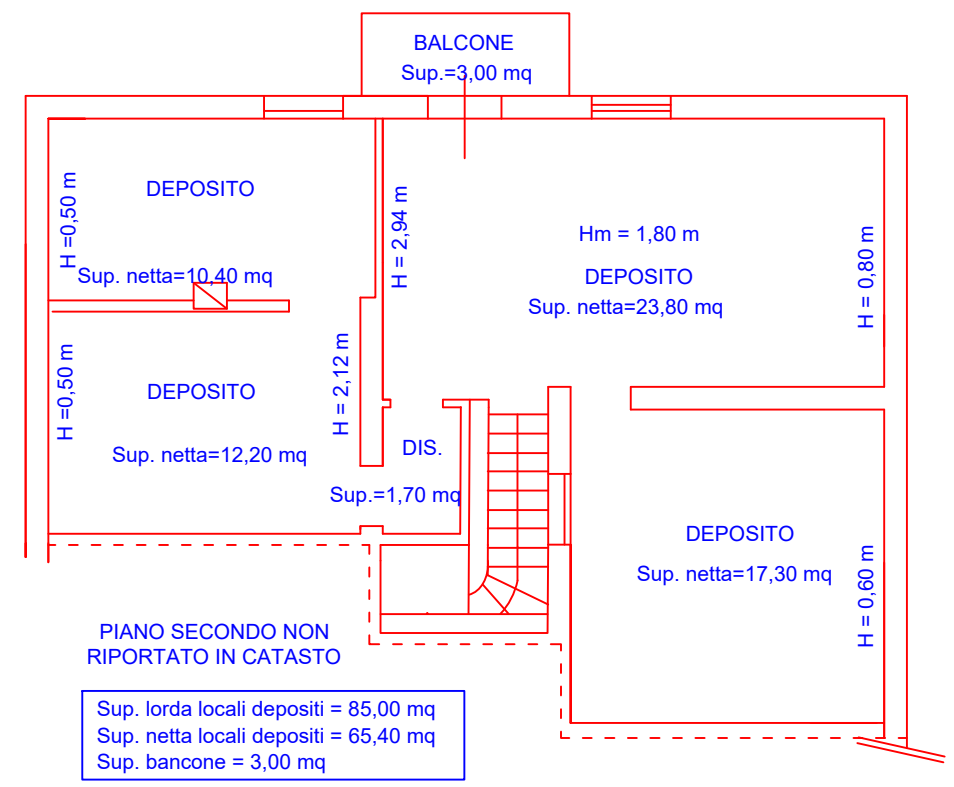
ABITAZIONE
PIANO TERRA
Sup. lorda = 114,70 mq
Sup. netta = 84,60 mq

PIANO TERRA
H = 2,50 m



ABITAZIONE
PIANO PRIMO
Sup. lorda = 106,70 mq
Sup. netta = 79,00 mq
Sup. balconi = 26,70 mq

PIANO PRIMO
H = 2,80 m

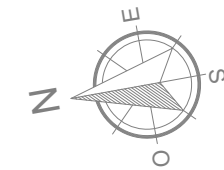


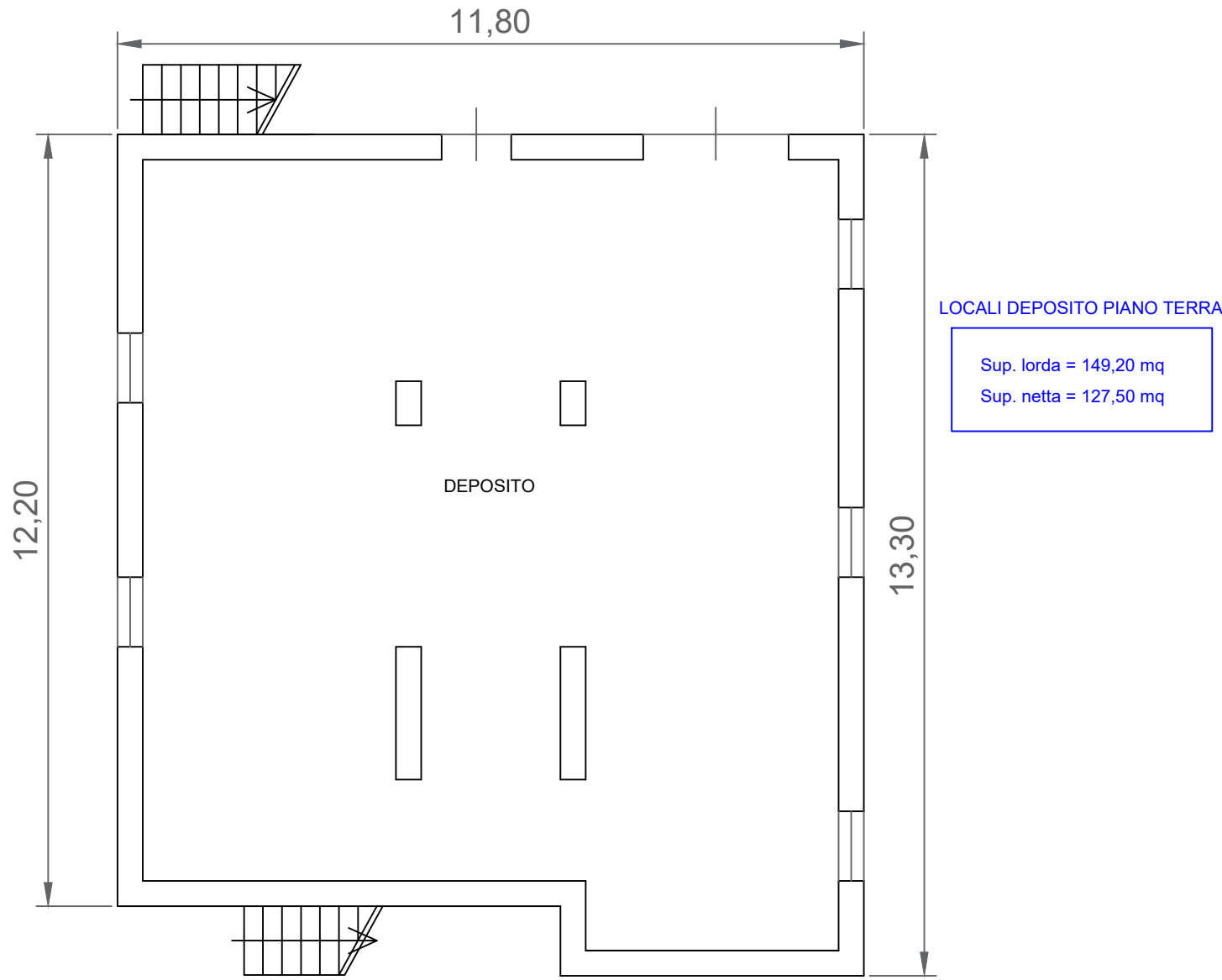
PIANO SECONDO NON
RIPORTATO IN CATASTO
Sup. lorda locali depositi = 85,00 mq
Sup. netta locali depositi = 65,40 mq
Sup. balconi = 3,00 mq

PIANO SECONDO
Hm = 1,60 m

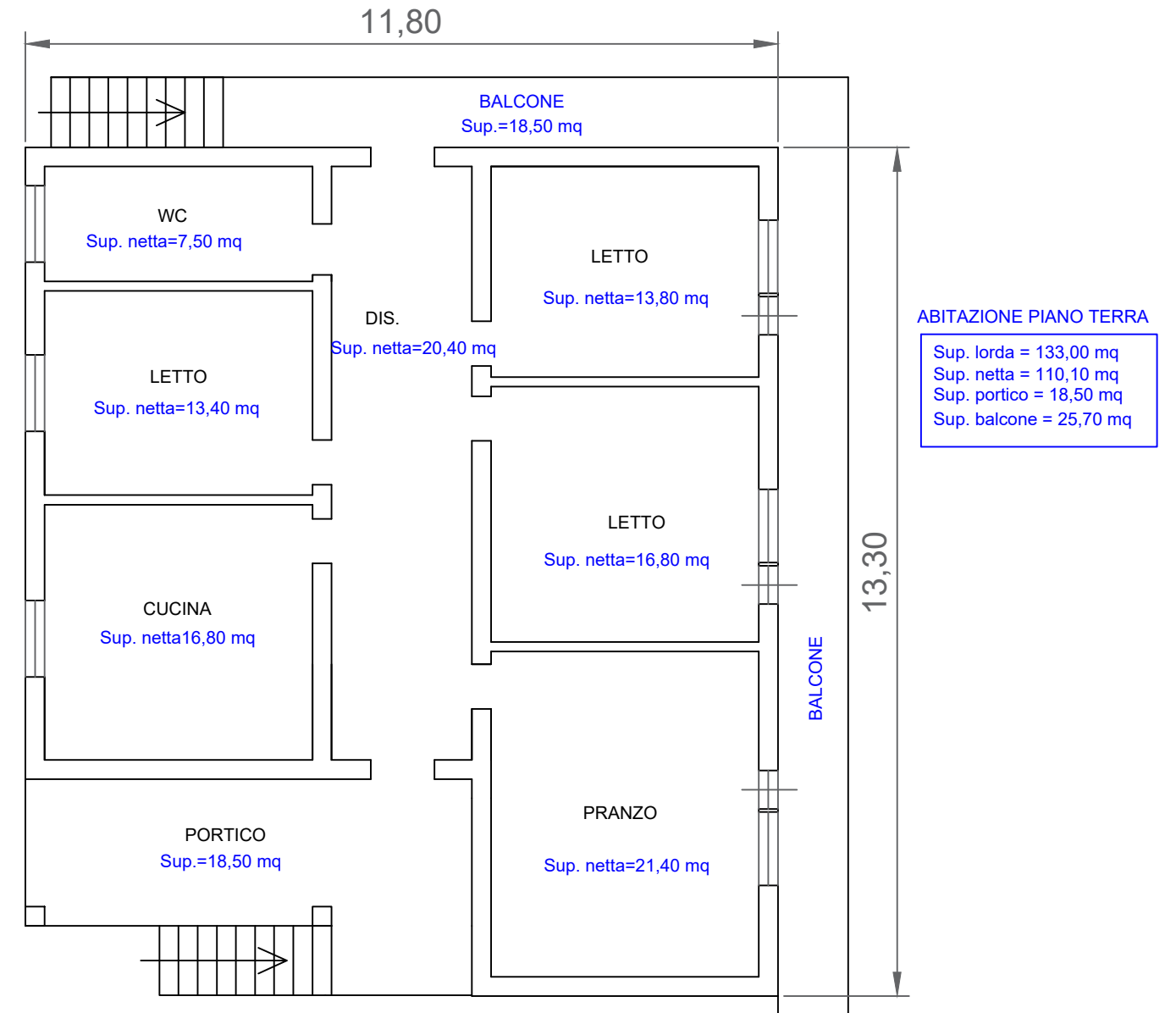
DIFFORMITA'

- Opere non presenti in catasto riportate in colore rosso

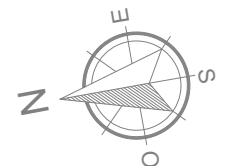


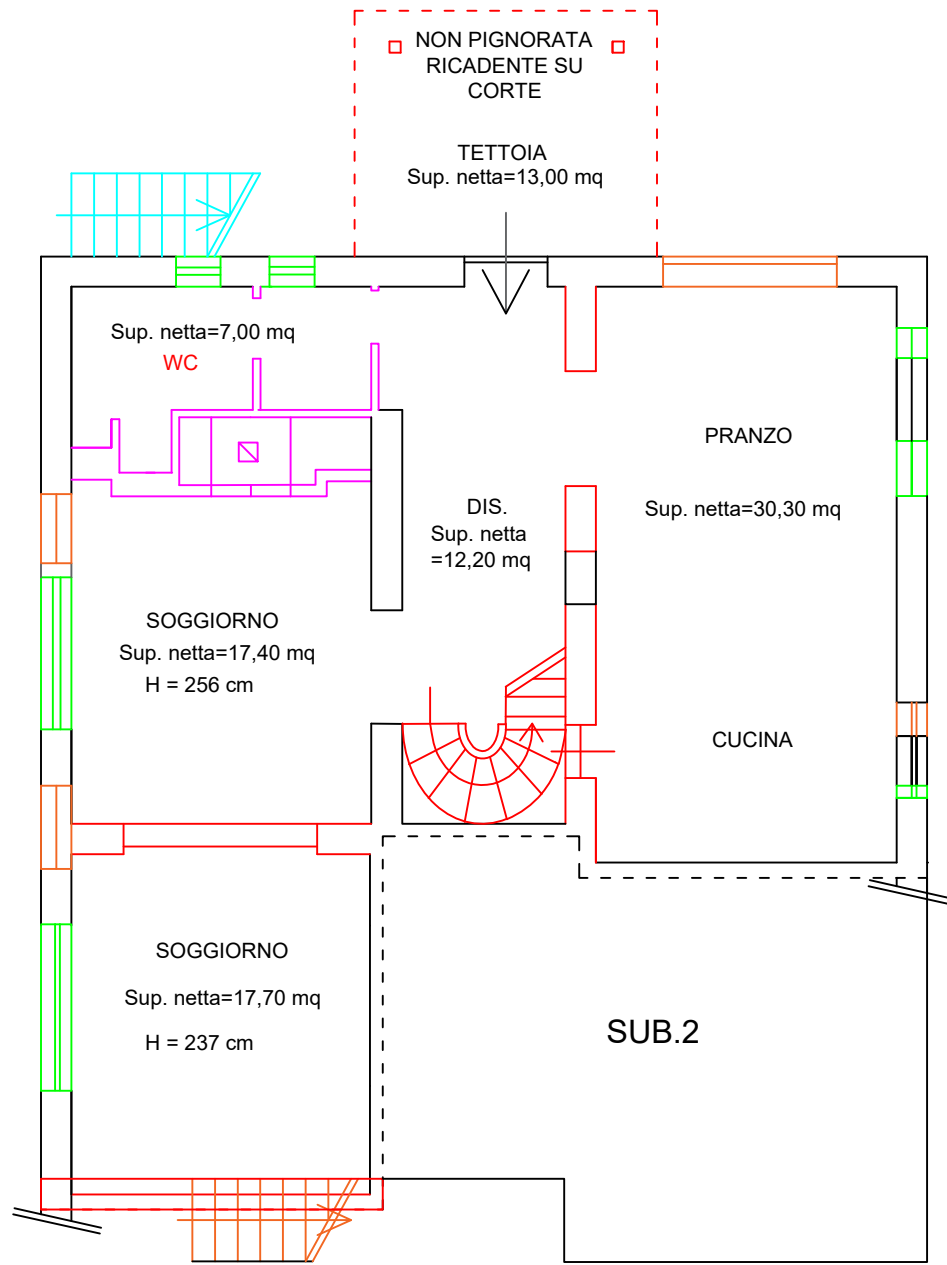


PIANO SEMINTERRATO
H = 2,50 m

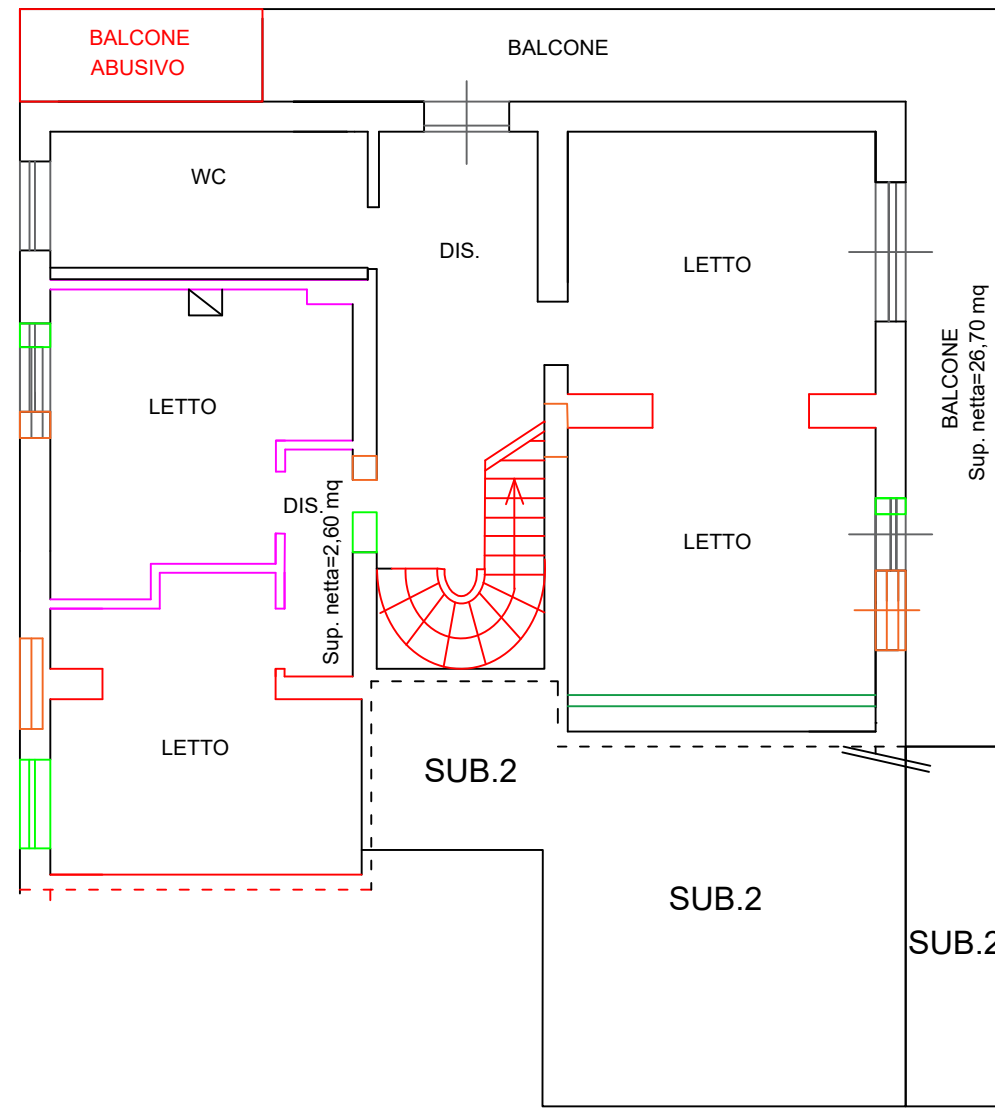


PIANO RIALZATO
H = 3,00 m

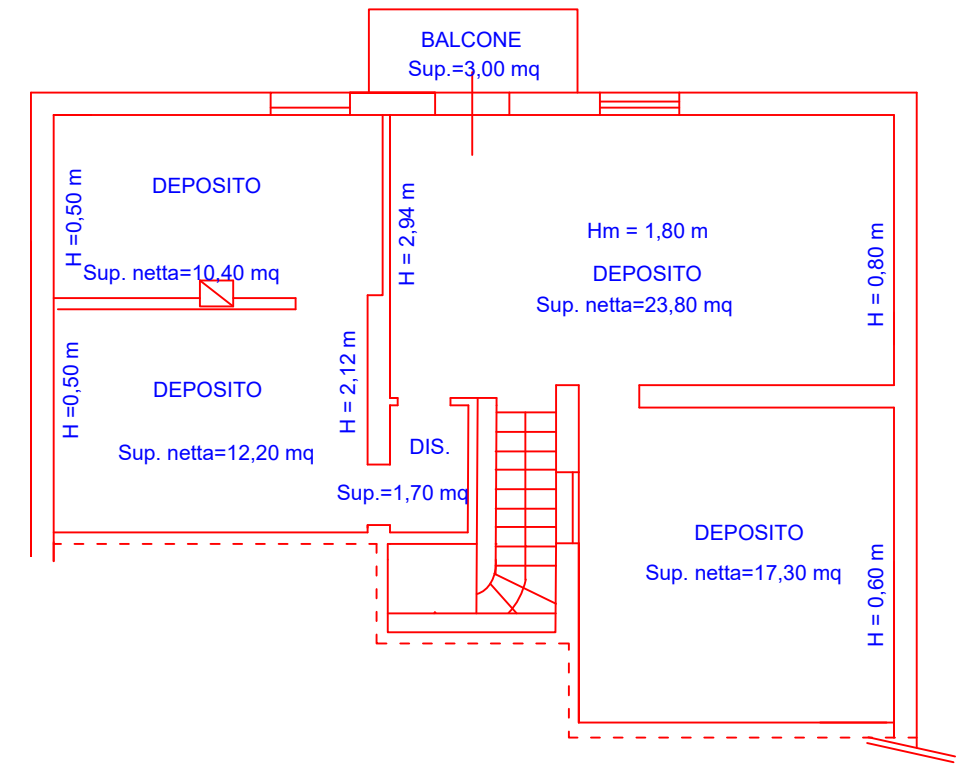




ABITAZIONE
PIANO TERRA



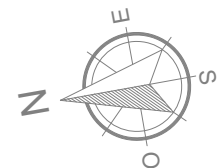
ABITAZIONE
PIANO PRIMO

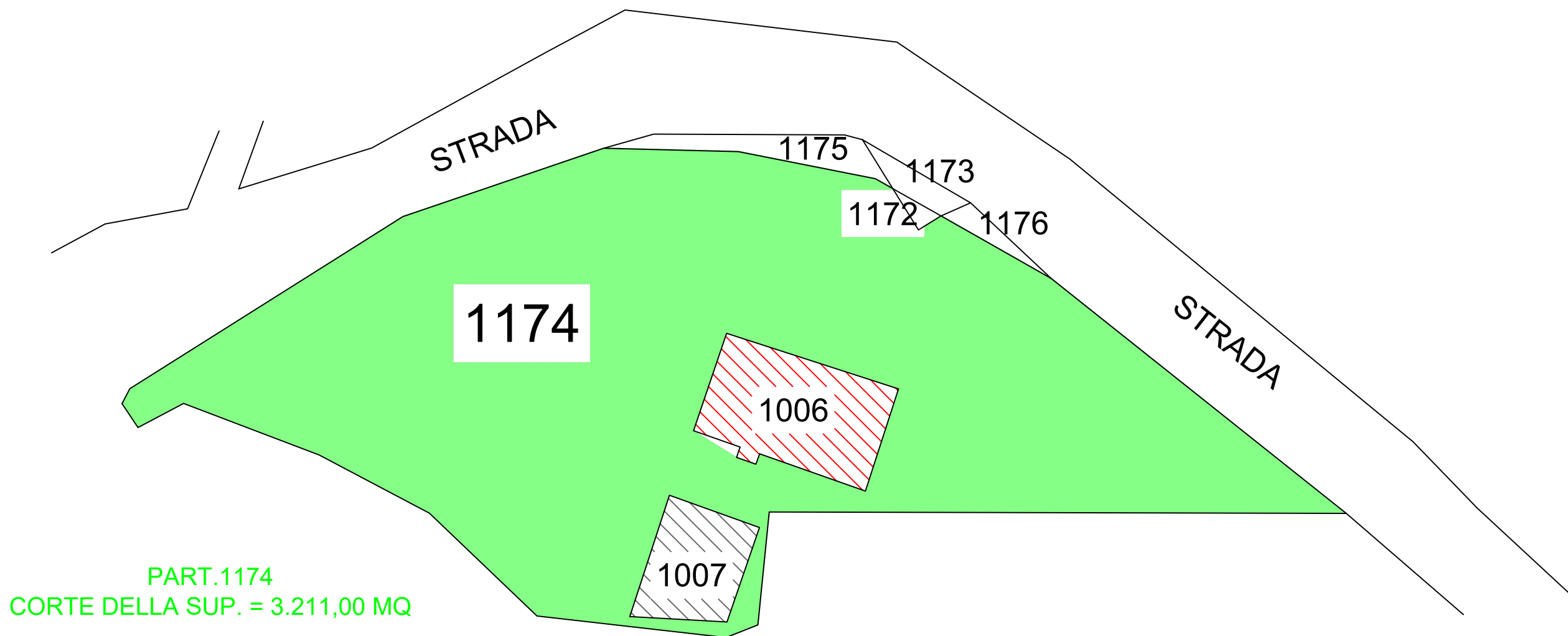


PIANO SOTTOTETTO NON
PREVISTO DA PROGETTO
ABUSIVO

DIFFORMITA'

- Opere di chiusura su muratura portante (colore rosso)
- Realizzazioni tramezzature interne (colore fucsia)
- Opere di chiusura (colore arancio)
- Opere di apertura su muratura portante (colore verde)
- Scala esterna non realizzata (colore celeste)
- Realizzazione scala interna (colore rosso)
- Cambio di destinazione d'uso del piano seminterrato da deposito ad abitazione





NOTE ESPLICATIVE

- PART. 1174 CORTE DELLE PART. 1006 E 1007 NON PIGNORATA IN QUANTO DI ALTRA DITTA
- PART. 1006 - FABBRICATO PIGNORATO - SUB.1
- PART. 1007 FABBRICATO DI ALTRA DITTA

