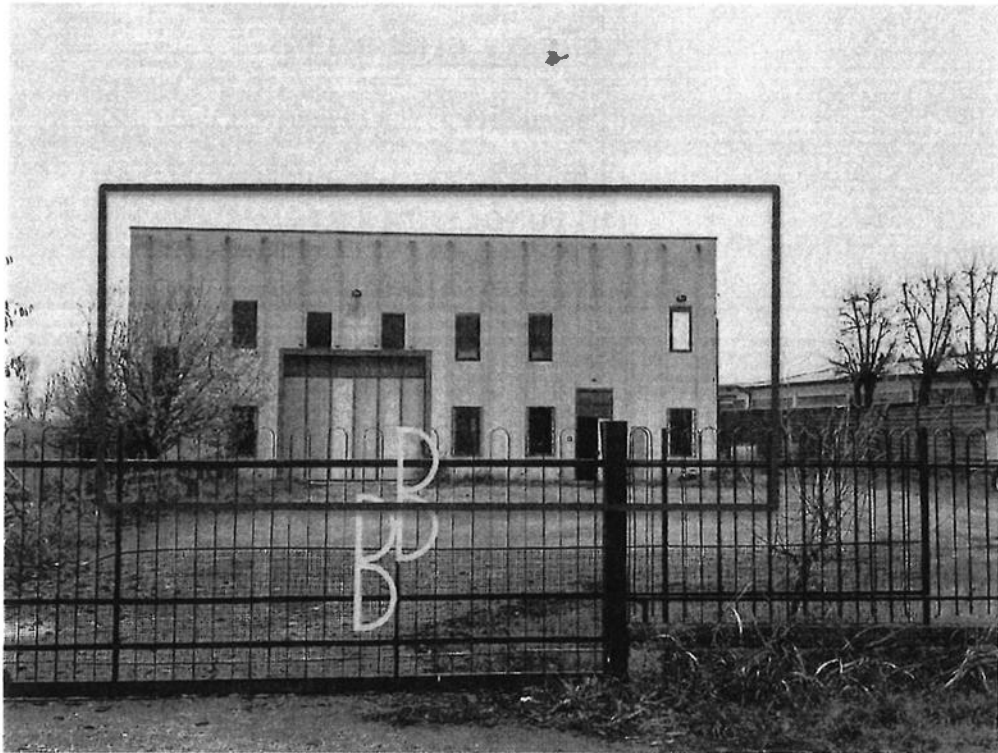


ALLEGATO 1: RILIEVO FOTOGRAFICO



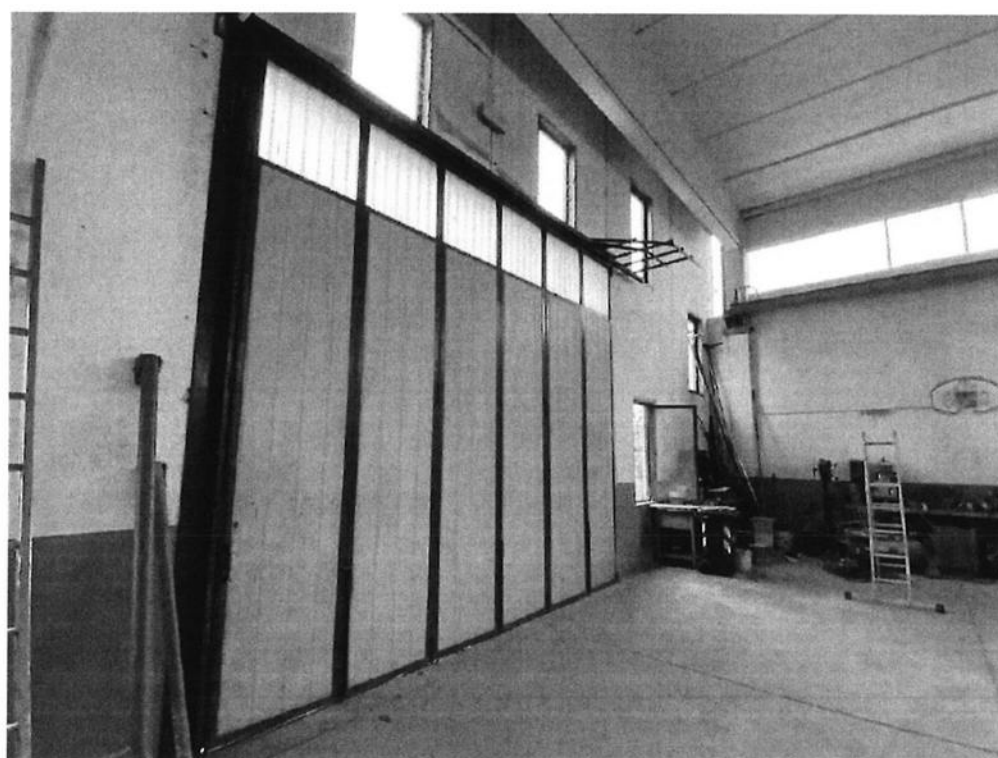
Edificio esterno



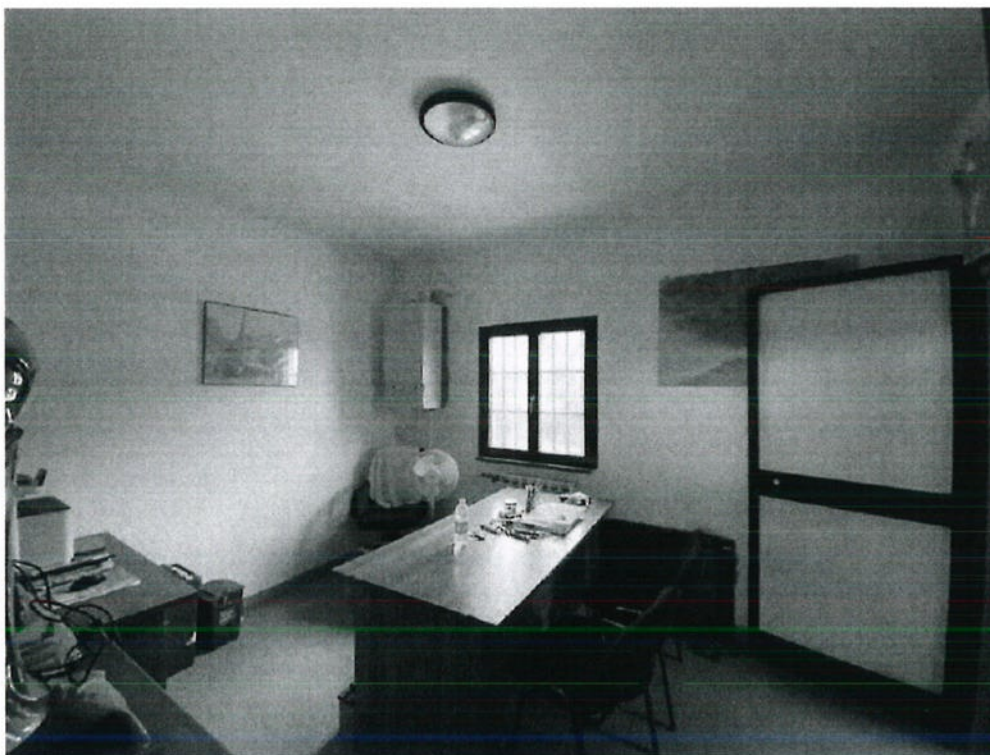
Edificio interno



Edificio interno



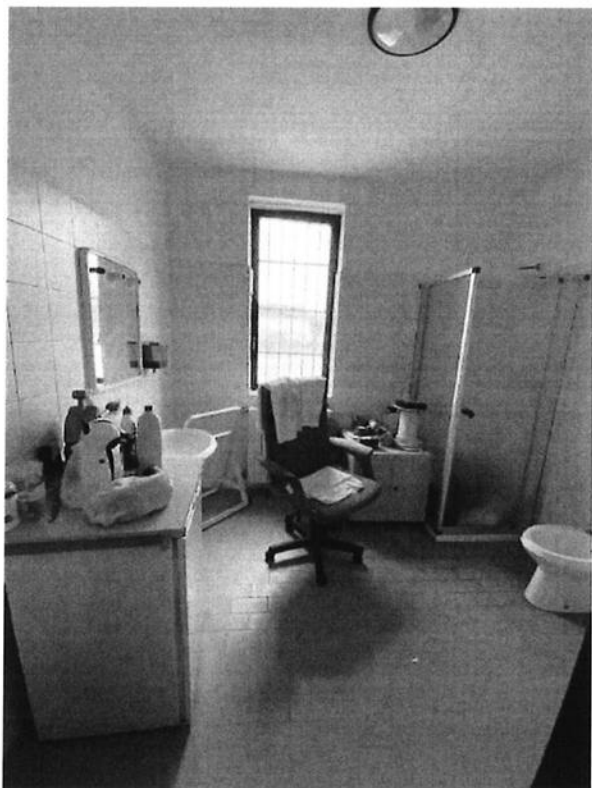
Portellone ingresso a sud



Ufficio



Esterno laterale



Wc



Portellone laterale a est - interno



Portellone laterale a est – esterno



Recinzione laterale



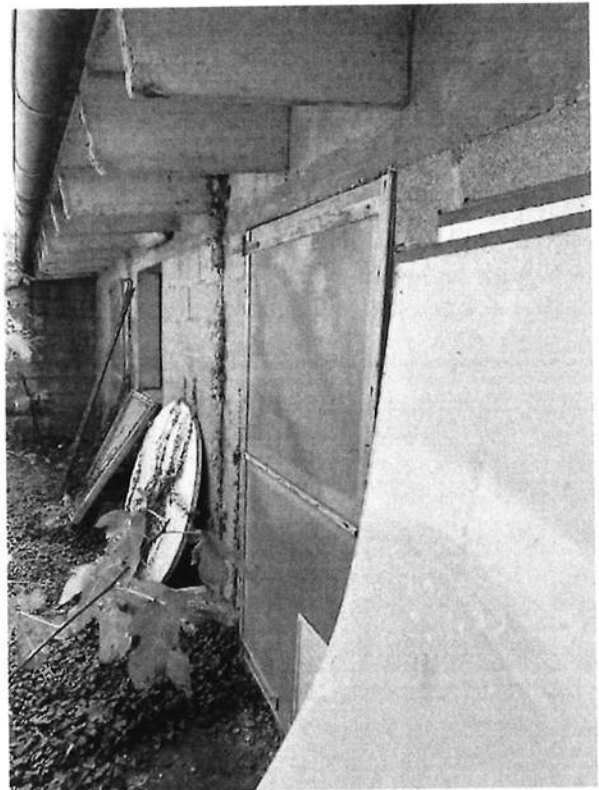
Area esterna lotto



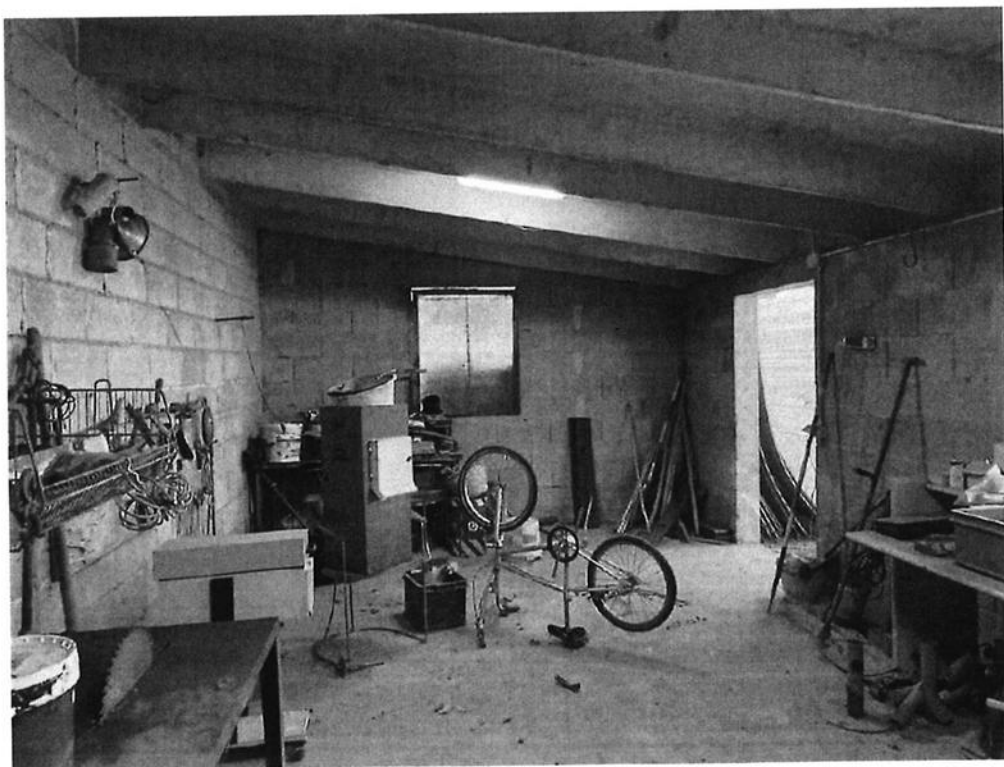
Area esterna lotto



Area esterna lotto – retro baracche e tettoie



Dettaglio baracca



Baracca interna

ALLEGATO 2: ELABORATI GRAFICI

- **Mappa lotto – scala 1:500**
- **Pianta PIANO TERRA – scala 1:100**