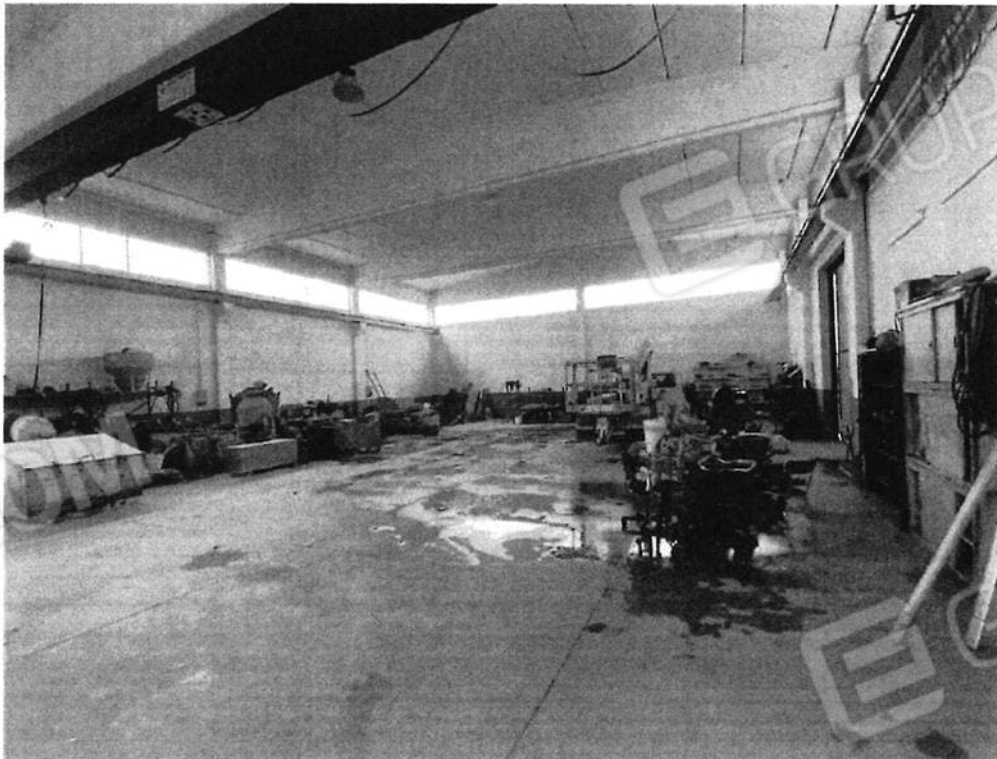


**ALLEGATO 1: RILIEVO FOTOGRAFICO**



Edificio esterno

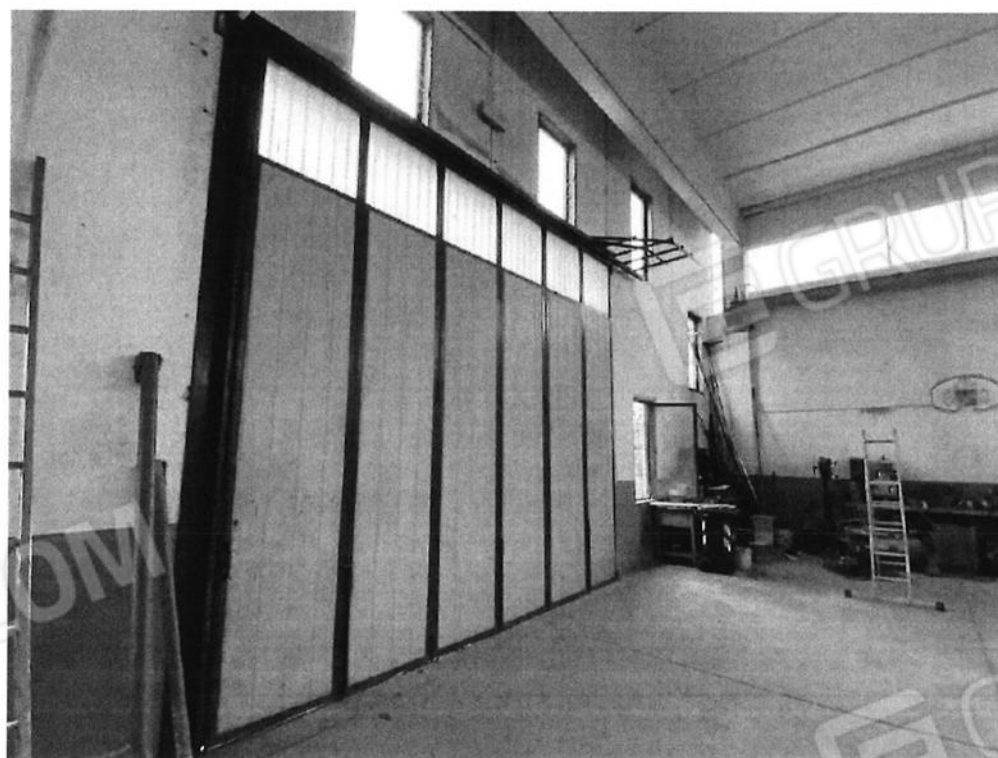


Edificio interno





Edificio interno



Portellone ingresso a sud

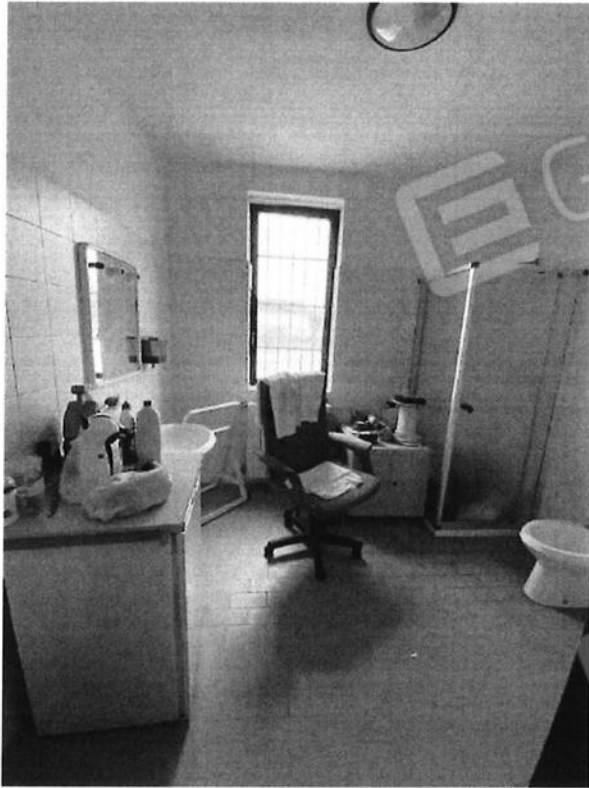


Ufficio



Esterno laterale

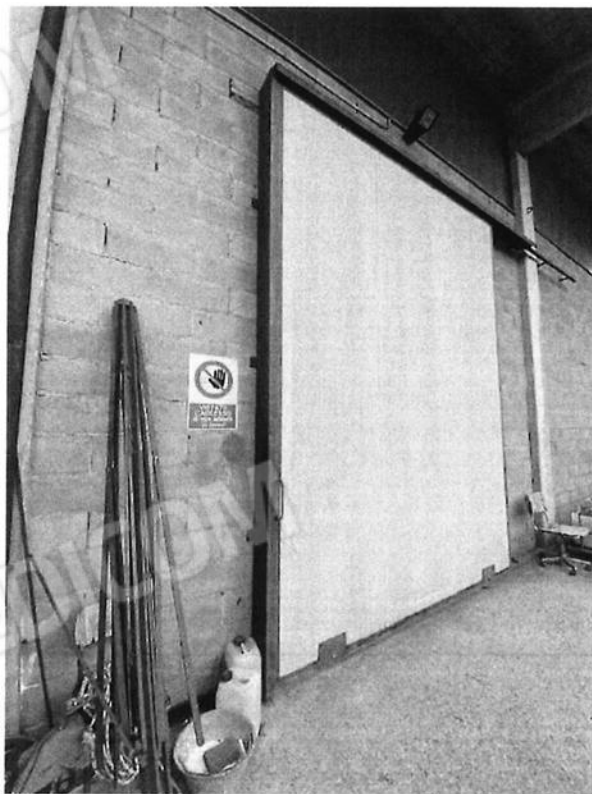




Wc



Portellone laterale a est - interno



Portellone laterale a est - esterno



Recinzione laterale



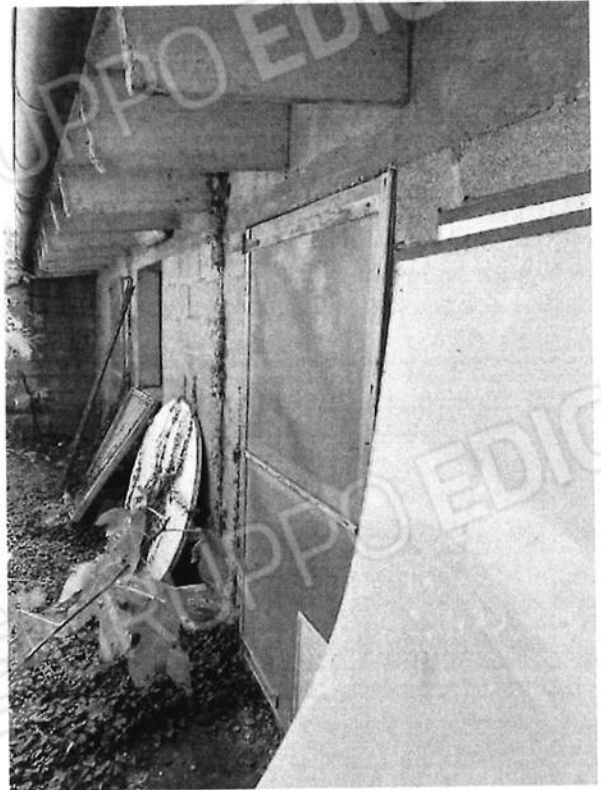
Area esterna lotto



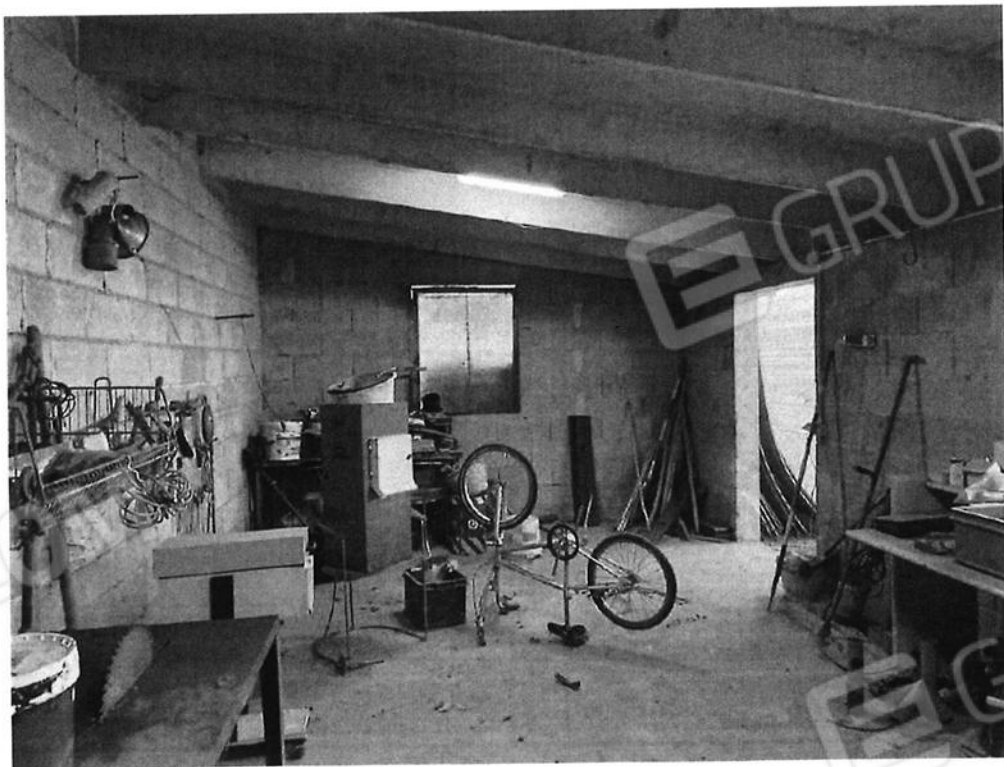
Area esterna lotto



Area esterna lotto – retro baracche e tettoie



Dettaglio baracca



Baracca interna

**ALLEGATO 2: ELABORATI GRAFICI**

- **Mappa lotto – scala 1:500**
- **Pianta PIANO TERRA – scala 1:100**