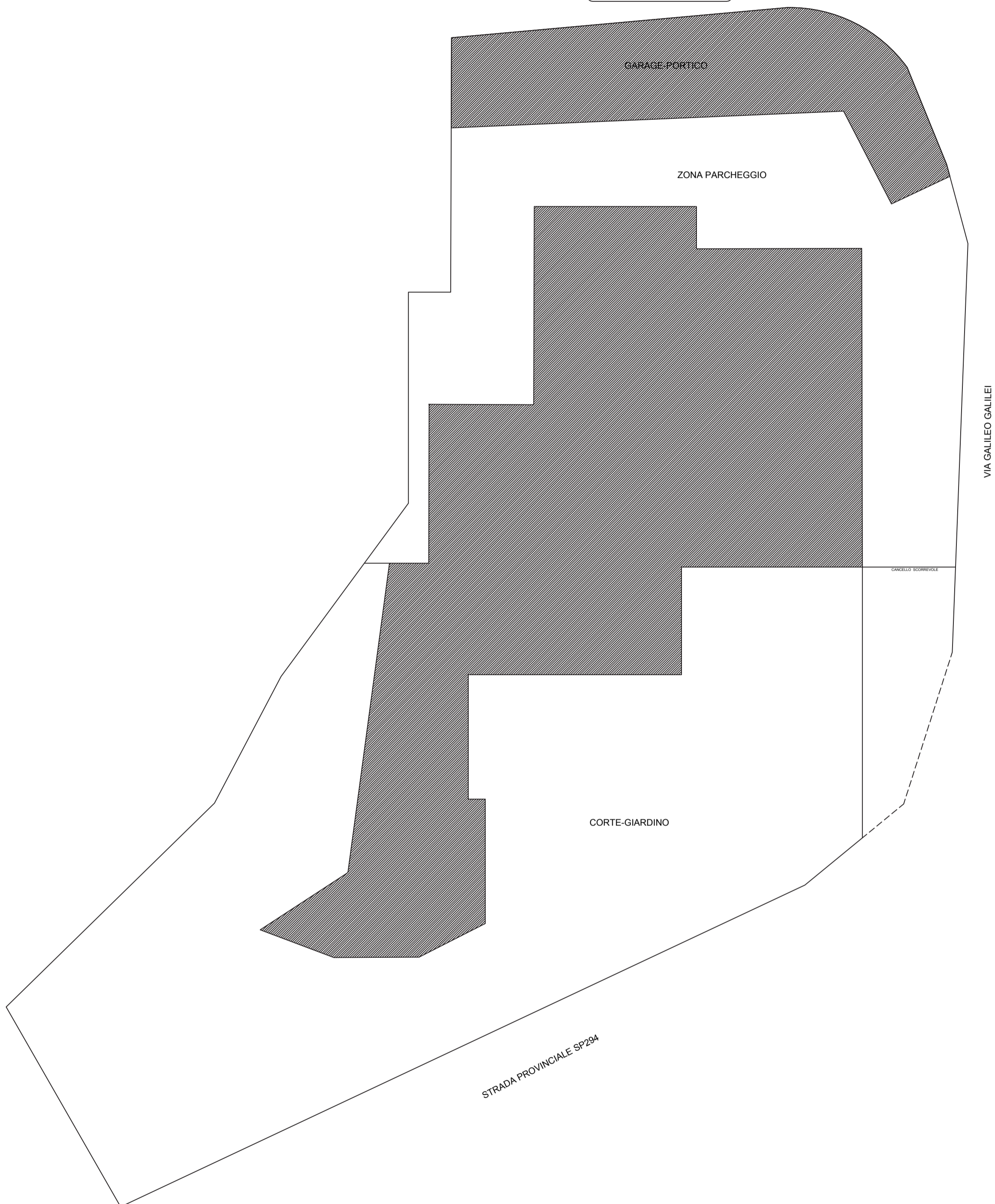
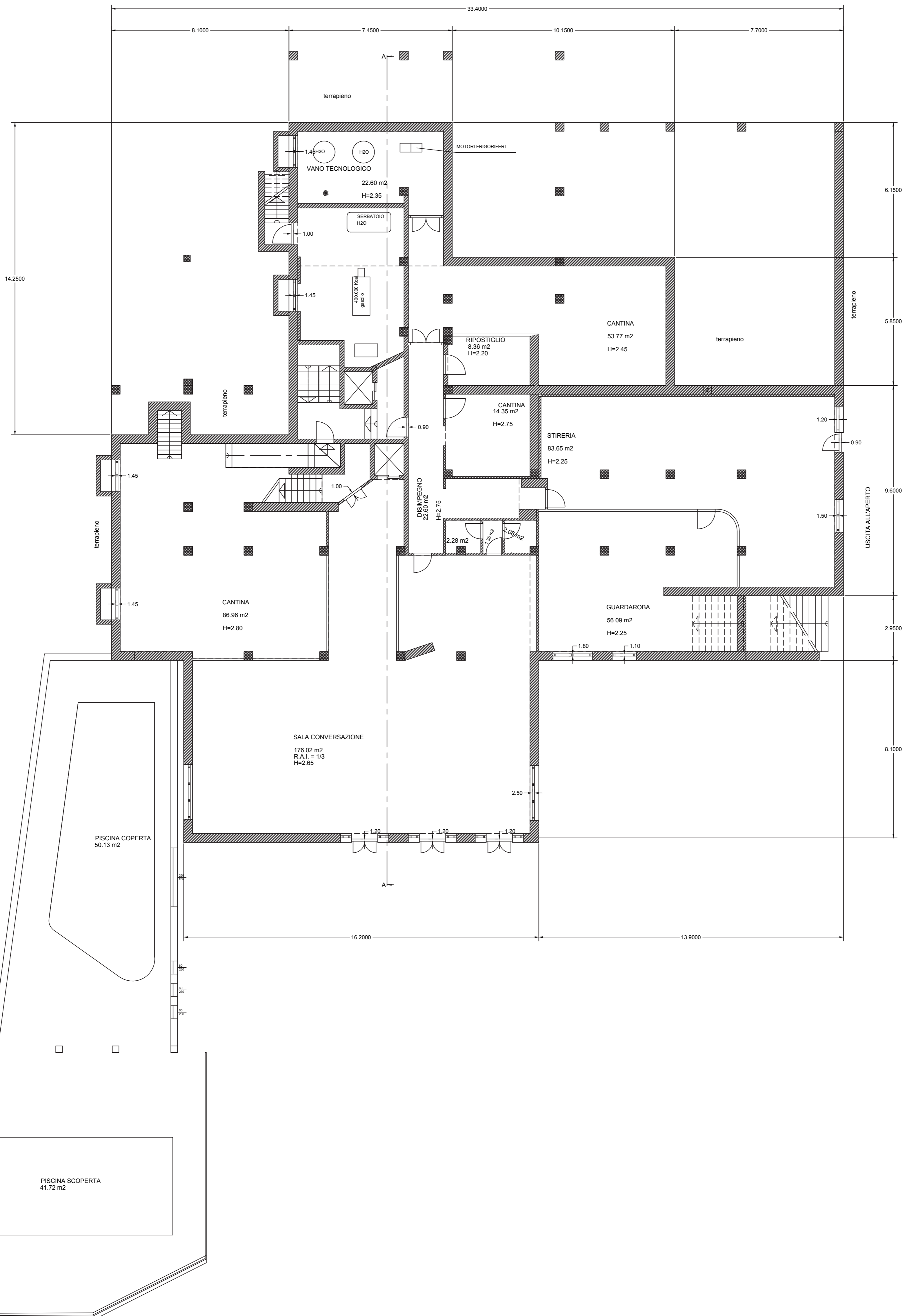


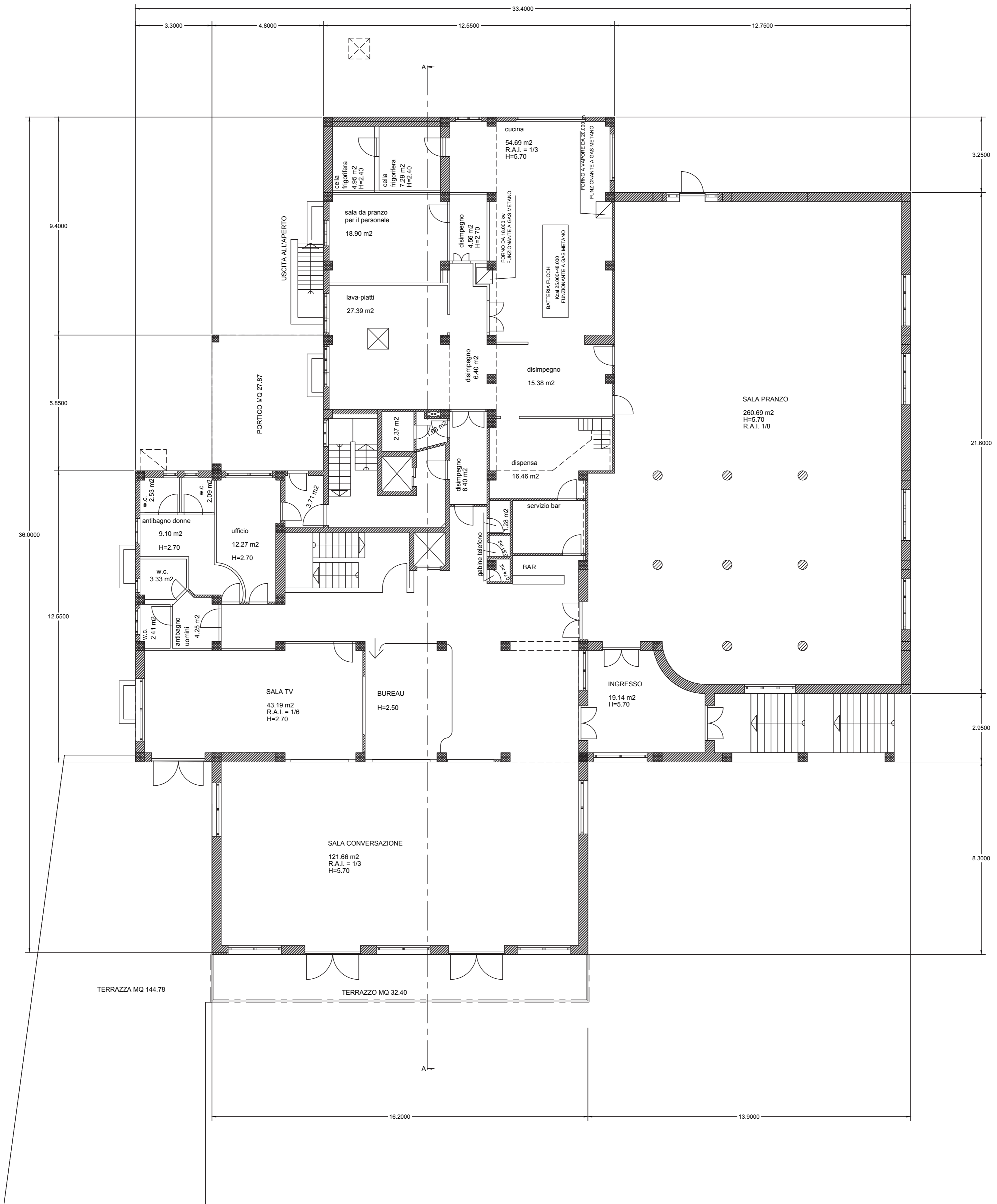
PLANIMETRIA GENERALE



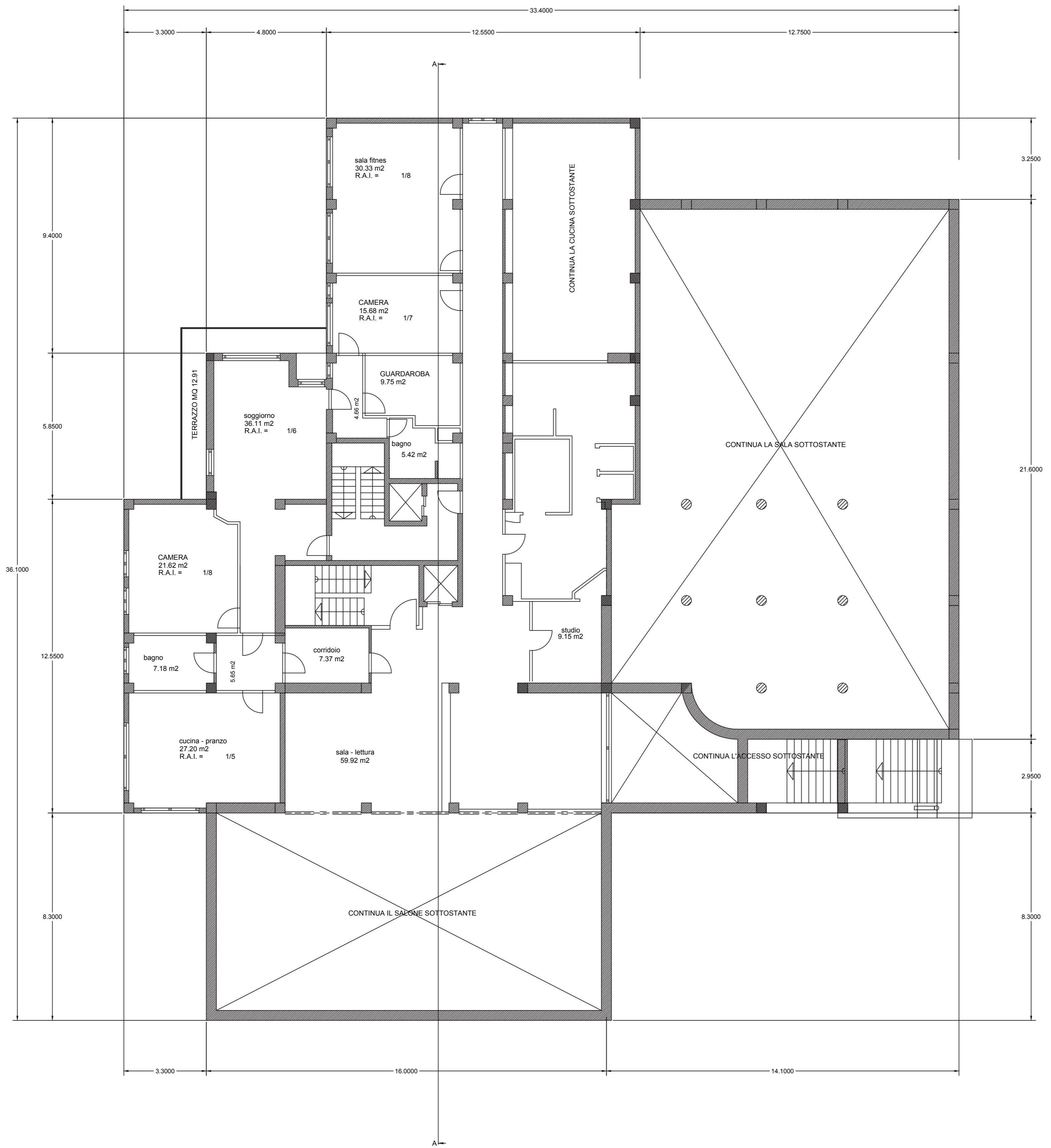
PIANTA PIANO SEMINTERRATO



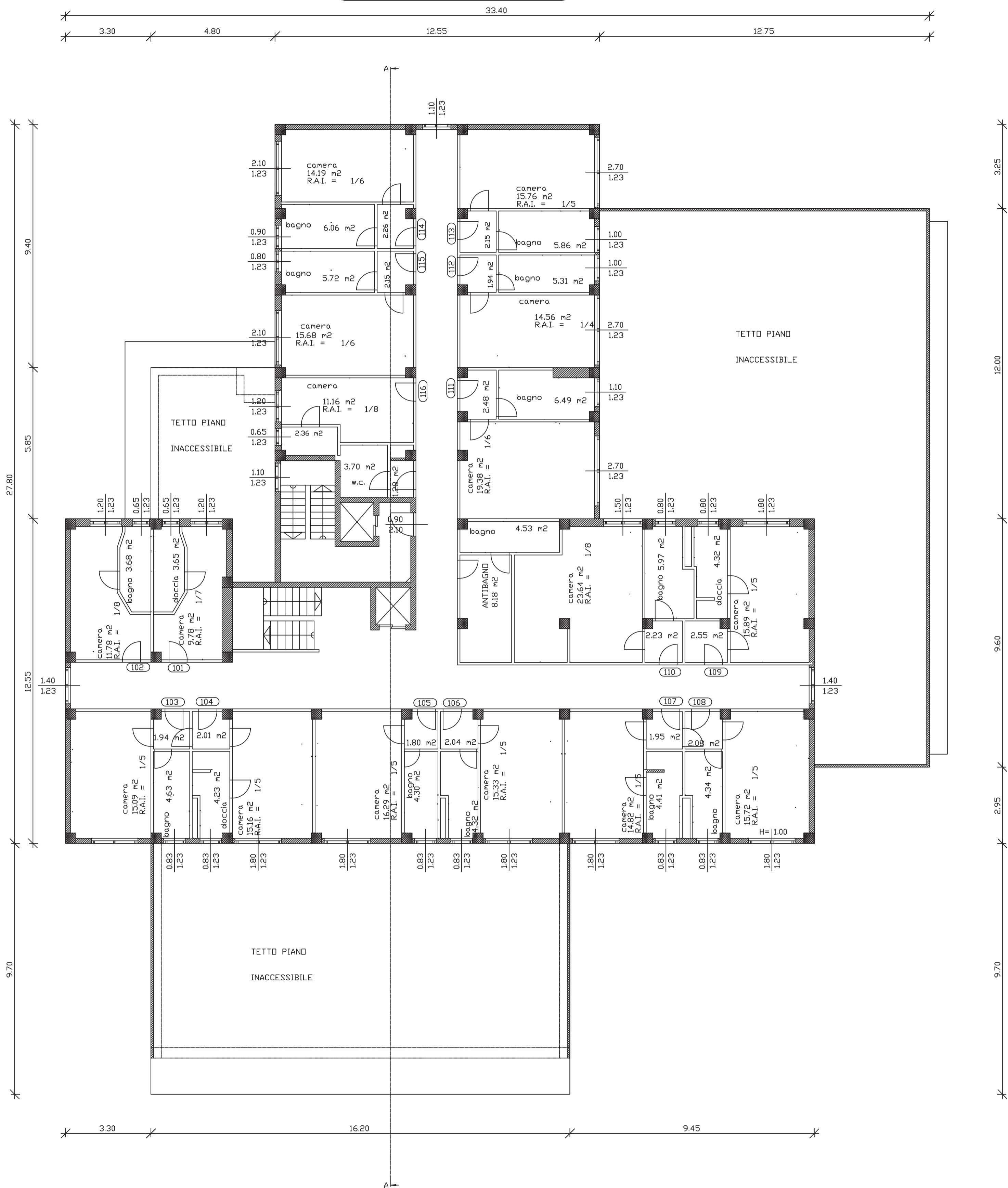
PIANTA PIANO TERRA



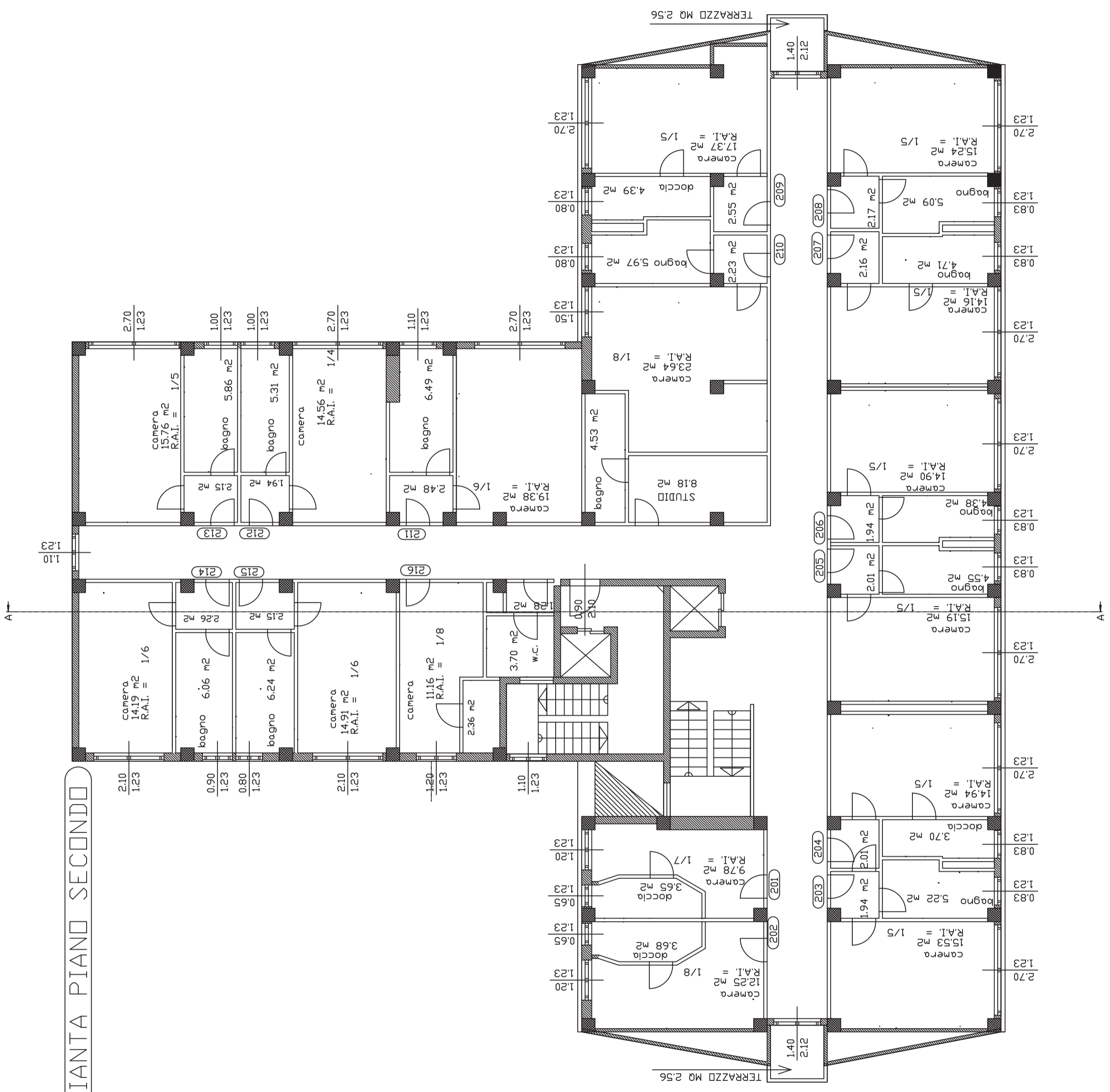
PIANTA PIANO SOPPALCO



PIANTA PIANO PRIMO

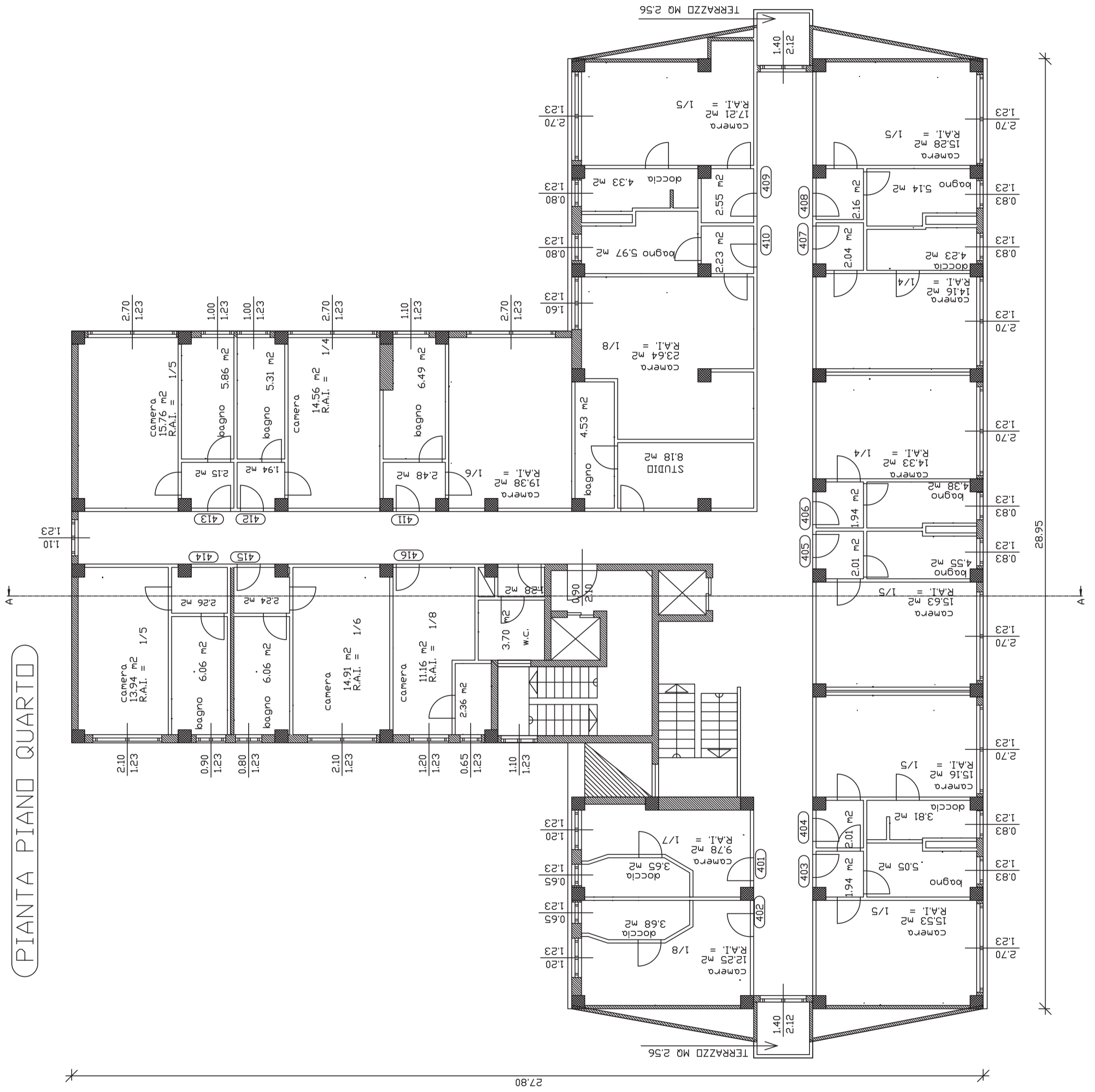


PIANTA PIANO SECONDO





PIANTA PIANO QUARTO











SEZIONE A-A

28.77

25.00

21.80

18.60

15.40

12.20

9.00

6.00

3.00

0.00

3.44 0.30 2.90 0.30 2.90 0.30 2.90 0.30 2.90 0.30 2.90 0.30 2.70 0.30 2.70 0.30 2.65 0.35

28.44

5.70

0.30

2.40 2.74