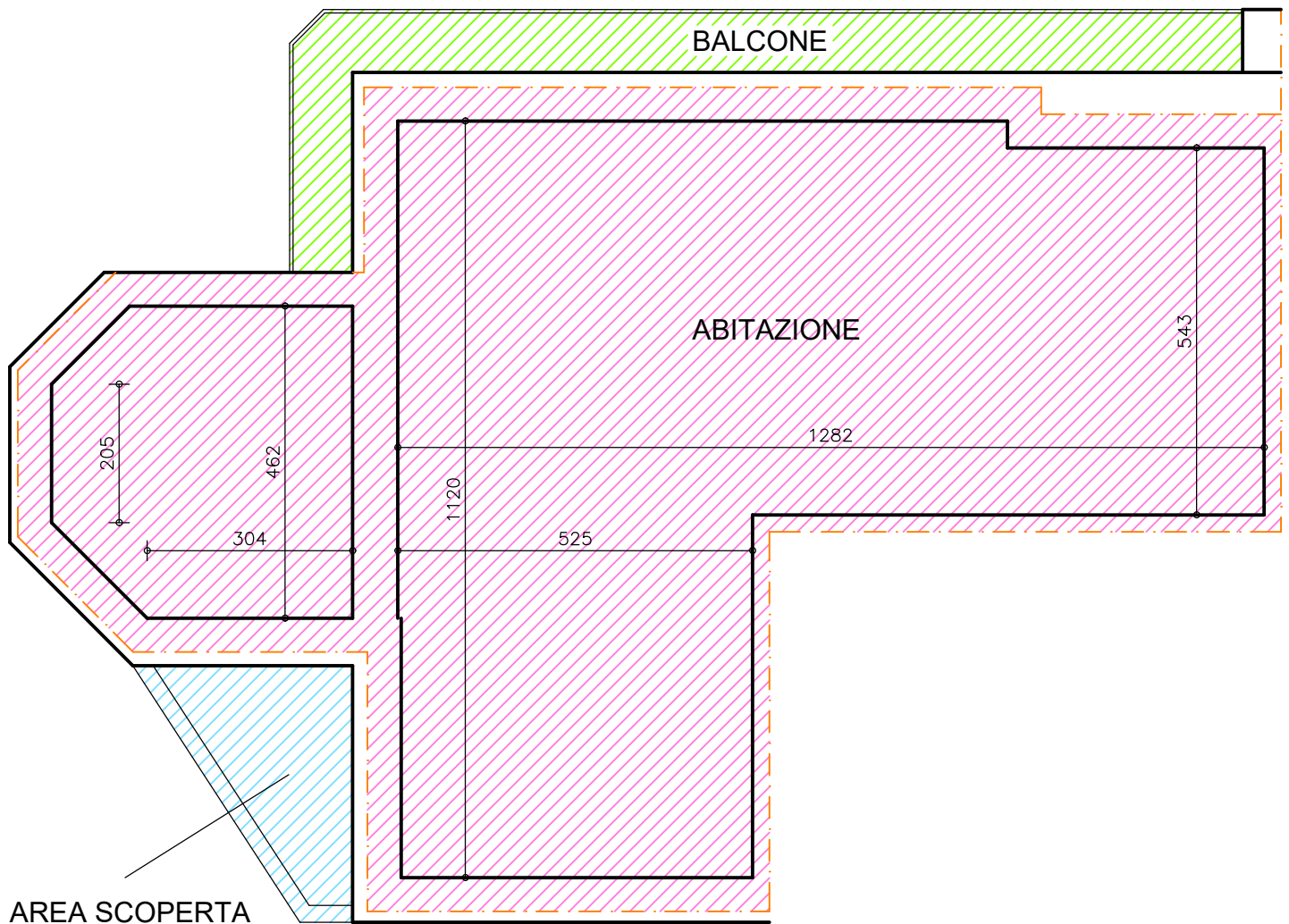



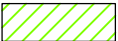

Unità abitativa Via Giovenale n°6 Napoli

Sezione Urbana CHI Fg.40 Part.163 Sub.3

Allegato n°4 Sviluppo Superfici



### PIANO TERRA

-  Superficie lorda ABITAZIONE mq.147,69
-  Superficie lorda BALCONE mq.15,74
-  Superficie lorda AREA SCOPERTA mq.7,66